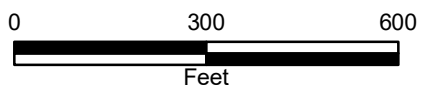



1952 Aerial

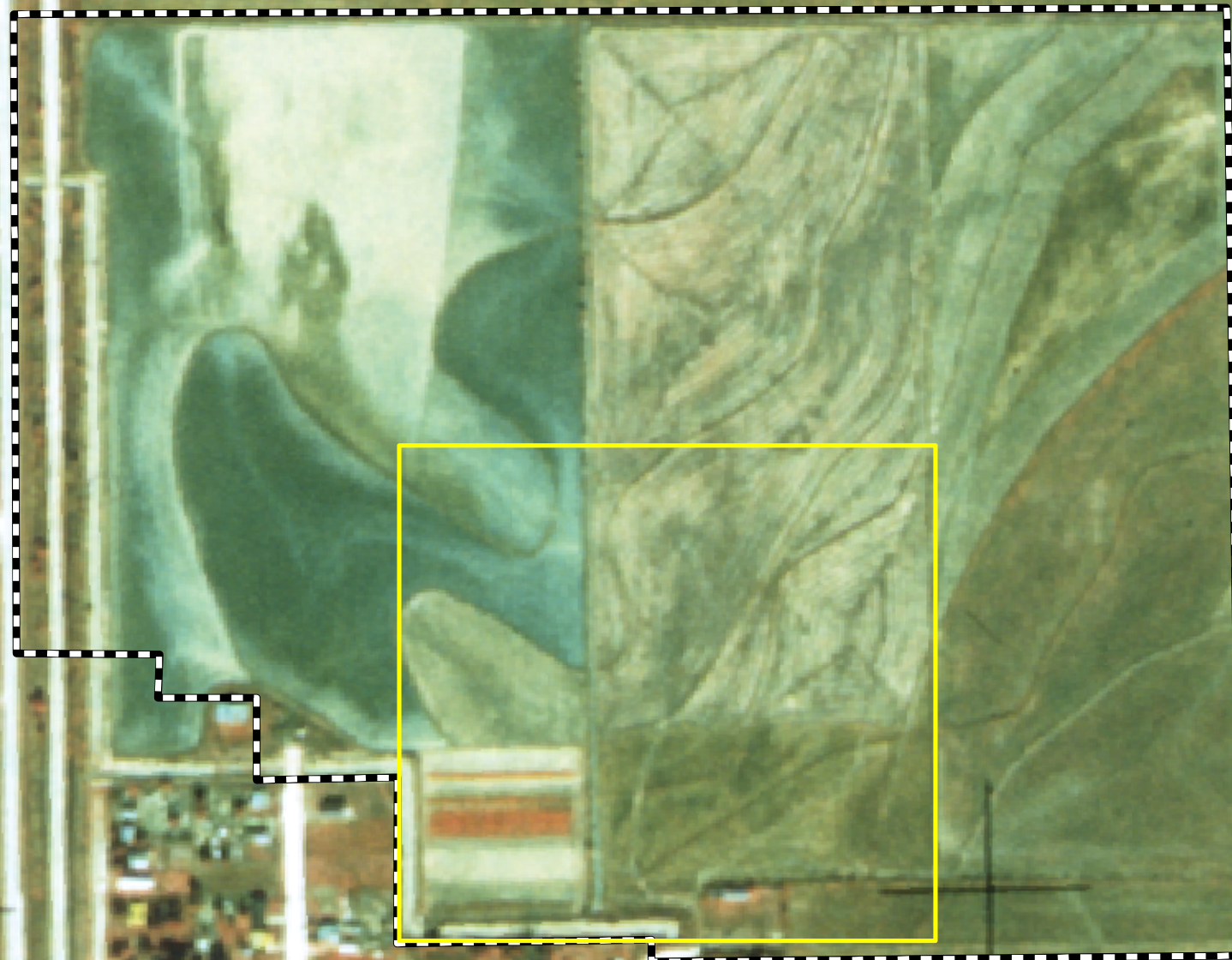


Explanation	
	Limited Admission Area
	Danny Paul Gastal Property Boundary

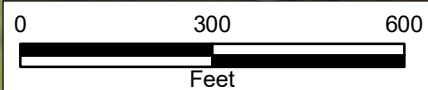
ESB Drawn By	BTP Approved By	1705.A37 Project No.	10/03/25 Date
<div>HYDRO-ENVIRONMENTAL TECHNOLOGY, INC. ENVIRONMENTAL CONSULTANTS 620 Apollo Road Scott, LA 70583 (337) 261-1963</div> <div></div>			



Figure H-1. 1952 Aerial photograph of the Gastal property. Source: USGS





**1970 Aerial**



Explanation	
	Limited Admission Area
	Danny Paul Gastal Property Boundary

ESB Drawn By	BTP Approved By	1705.A37 Project No.	10/03/25 Date
-----------------	--------------------	-------------------------	------------------

Figure H-2. 1970 Aerial photograph of the Gastal property. Source: USGS

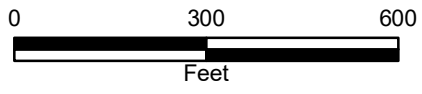
**HYDRO-ENVIRONMENTAL TECHNOLOGY, INC.**  
**ENVIRONMENTAL CONSULTANTS**  
620 Apollo Road  
Scott, LA 70583  
(337) 261-1963








1974 Aerial



Explanation	
	Limited Admission Area
	Danny Paul Gastal Property Boundary

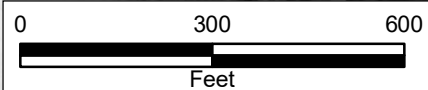
ESB Drawn By	BTP Approved By	1705.A37 Project No.	10/03/25 Date
<div>HYDRO-ENVIRONMENTAL TECHNOLOGY, INC. ENVIRONMENTAL CONSULTANTS 620 Apollo Road Scott, LA 70583 (337) 261-1963</div> <div></div>			

Figure H-3. 1974 Aerial photograph of the Gastal property. Source: USGS





1980 Aerial



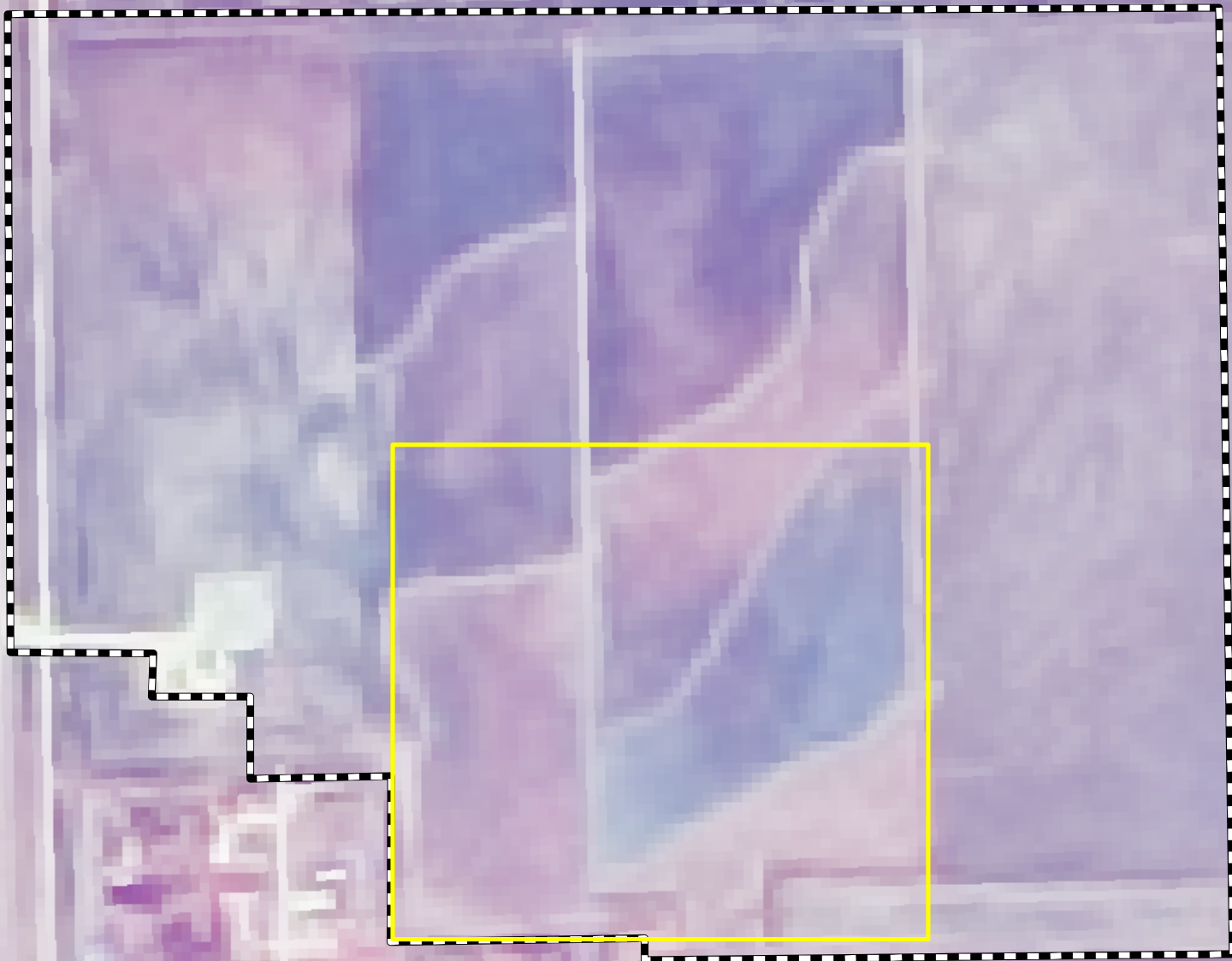
Explanation	
	Limited Admission Area
	Danny Paul Gastal Property Boundary

ESB Drawn By	BTP Approved By	1705.A37 Project No.	10/03/25 Date
<b>HYDRO-ENVIRONMENTAL TECHNOLOGY, INC.</b> <b>ENVIRONMENTAL CONSULTANTS</b> 620 Apollo Road Scott, LA 70583 (337) 261-1963			

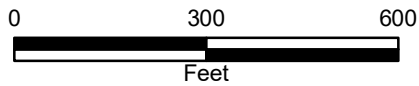


Figure H-4. 1980 Aerial photograph of the Gastal property. Source: USGS





**1985 Aerial**



Explanation	
	Limited Admission Area
	Danny Paul Gastal Property Boundary

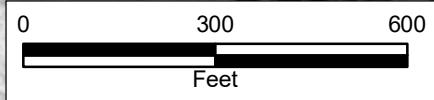
ESB Drawn By	BTP Approved By	1705.A37 Project No.	10/03/25 Date
<div>HYDRO-ENVIRONMENTAL TECHNOLOGY, INC. ENVIRONMENTAL CONSULTANTS 620 Apollo Road Scott, LA 70583 (337) 261-1963</div> <div></div>			

Figure H-5. 1985 Aerial photograph of the Gastal property. Source: USGS





1990 Aerial



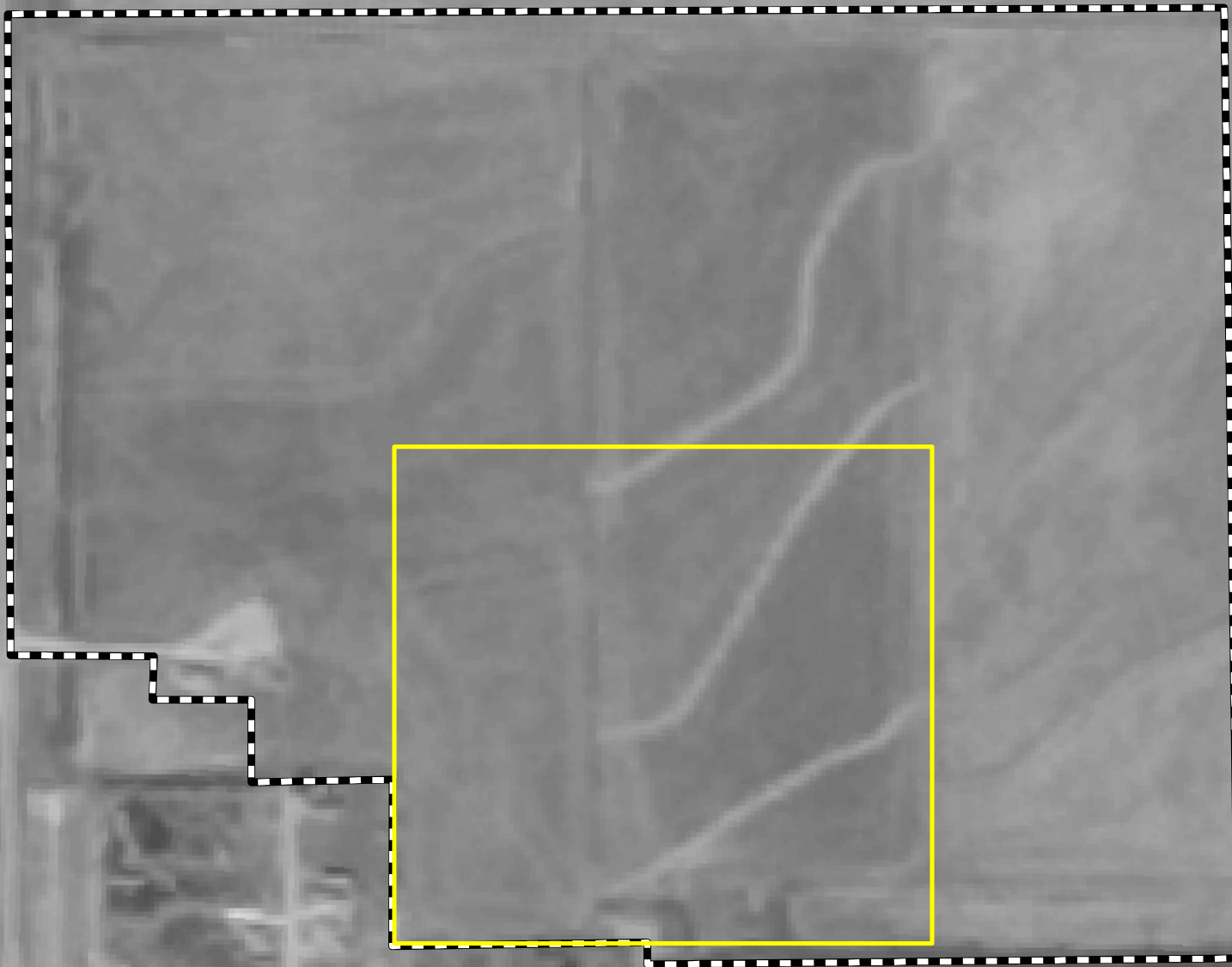
Explanation	
	Limited Admission Area
	Danny Paul Gastal Property Boundary



ESB Drawn By	BTP Approved By	1705.A37 Project No.	10/03/25 Date
<b>HYDRO-ENVIRONMENTAL TECHNOLOGY, INC.</b> <b>ENVIRONMENTAL CONSULTANTS</b> 620 Apollo Road Scott, LA 70583 (337) 261-1963			



Figure H-6. 1990 Aerial photograph of the Gastal property. Source: USGS





Explanation	
	Limited Admission Area
	Danny Paul Gastal Property Boundary

1994 Aerial

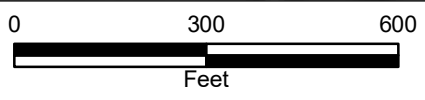
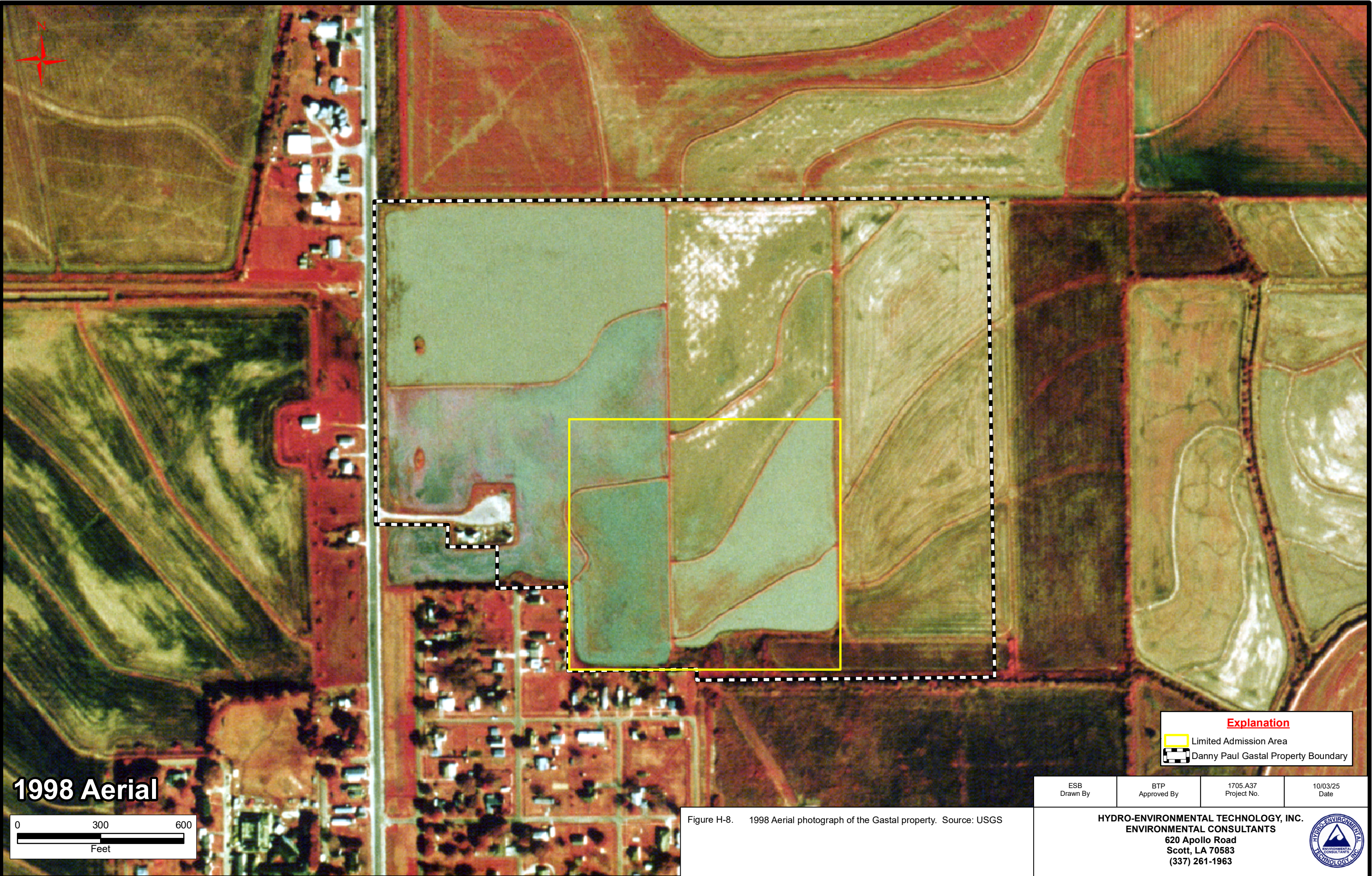


Figure H-7. 1994 Aerial photograph of the Gastal property. Source: USGS

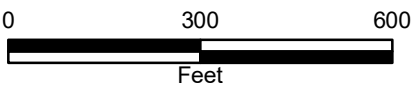
ESB Drawn By	BTP Approved By	1705.A37 Project No.	10/03/25 Date
<b>HYDRO-ENVIRONMENTAL TECHNOLOGY, INC.</b> <b>ENVIRONMENTAL CONSULTANTS</b> 620 Apollo Road Scott, LA 70583 (337) 261-1963			







1998 Aerial



Explanation	
	Limited Admission Area
	Danny Paul Gastal Property Boundary

ESB Drawn By	BTP Approved By	1705.A37 Project No.	10/03/25 Date
-----------------	--------------------	-------------------------	------------------

Figure H-8. 1998 Aerial photograph of the Gastal property. Source: USGS

HYDRO-ENVIRONMENTAL TECHNOLOGY, INC.  
ENVIRONMENTAL CONSULTANTS  
620 Apollo Road  
Scott, LA 70583  
(337) 261-1963









2004 Aerial



Explanation	
	Limited Admission Area
	Danny Paul Gastal Property Boundary

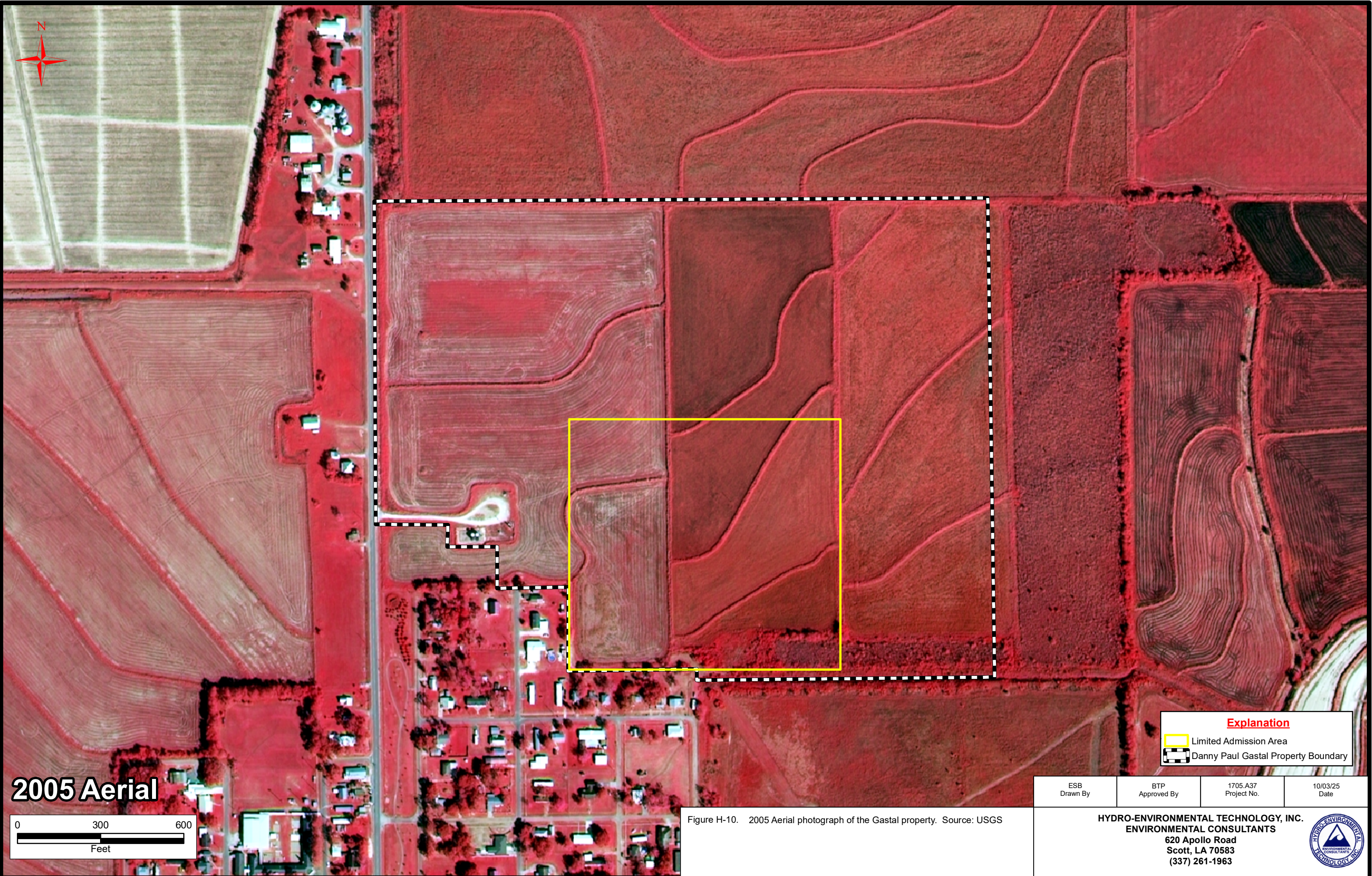
ESB Drawn By	BTP Approved By	1705.A37 Project No.	10/03/25 Date
-----------------	--------------------	-------------------------	------------------

Figure H-9. 2004 Aerial photograph of the Gastal property. Source: USGS

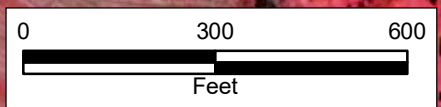
HYDRO-ENVIRONMENTAL TECHNOLOGY, INC.  
ENVIRONMENTAL CONSULTANTS  
620 Apollo Road  
Scott, LA 70583  
(337) 261-1963









**2005 Aerial**



Explanation	
	Limited Admission Area
	Danny Paul Gastal Property Boundary

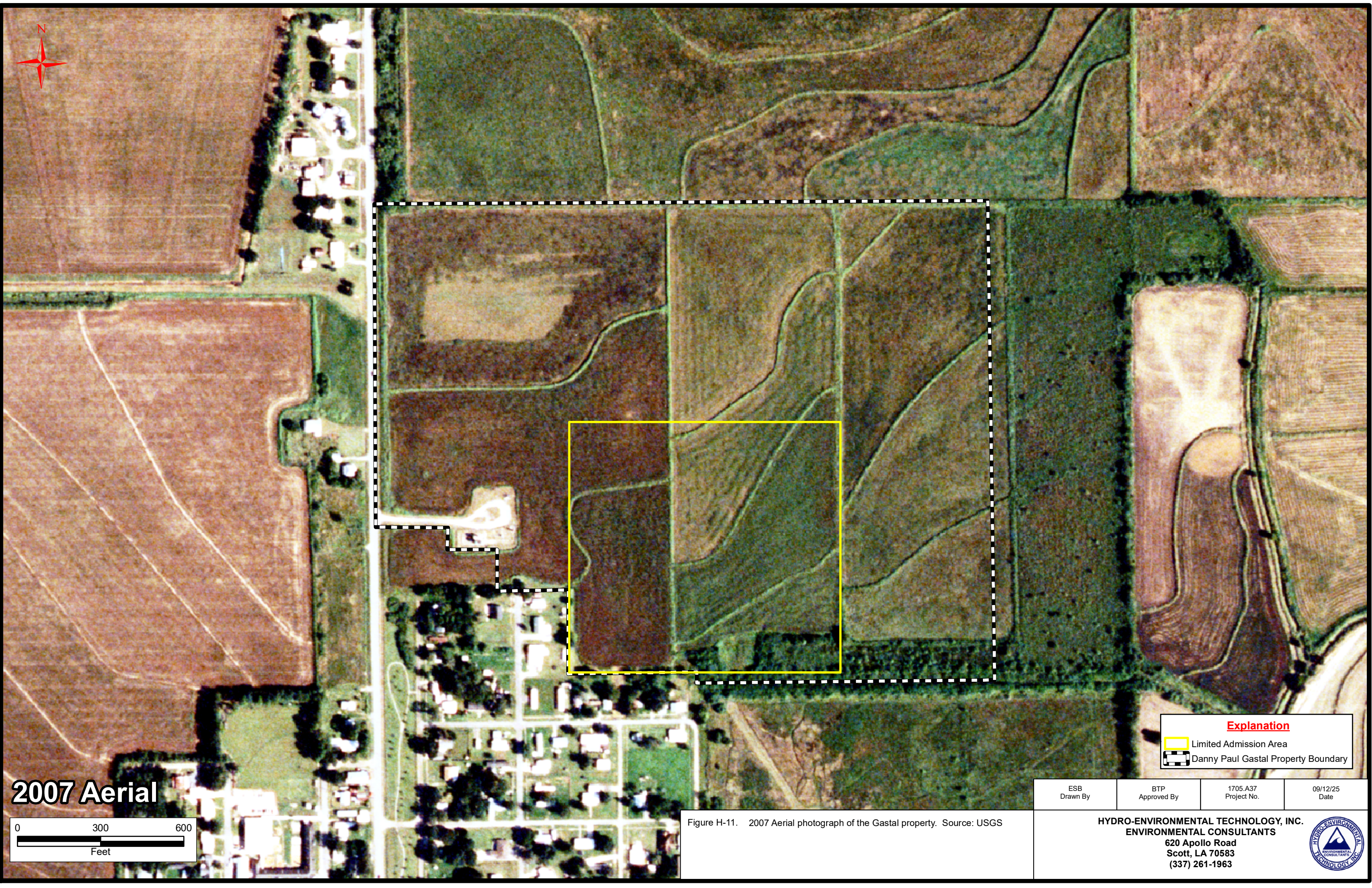
ESB Drawn By	BTP Approved By	1705.A37 Project No.	10/03/25 Date
-----------------	--------------------	-------------------------	------------------

Figure H-10. 2005 Aerial photograph of the Gastal property. Source: USGS

**HYDRO-ENVIRONMENTAL TECHNOLOGY, INC.**  
**ENVIRONMENTAL CONSULTANTS**  
620 Apollo Road  
Scott, LA 70583  
(337) 261-1963







**2007 Aerial**

0 300 600  
Feet

Explanation	
	Limited Admission Area
	Danny Paul Gastal Property Boundary

ESB Drawn By	BTP Approved By	1705.A37 Project No.	09/12/25 Date
<b>HYDRO-ENVIRONMENTAL TECHNOLOGY, INC.</b> <b>ENVIRONMENTAL CONSULTANTS</b> 620 Apollo Road Scott, LA 70583 (337) 261-1963			

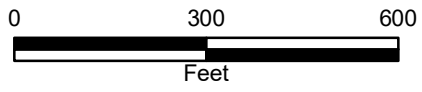


Figure H-11. 2007 Aerial photograph of the Gastal property. Source: USGS





2009 Aerial

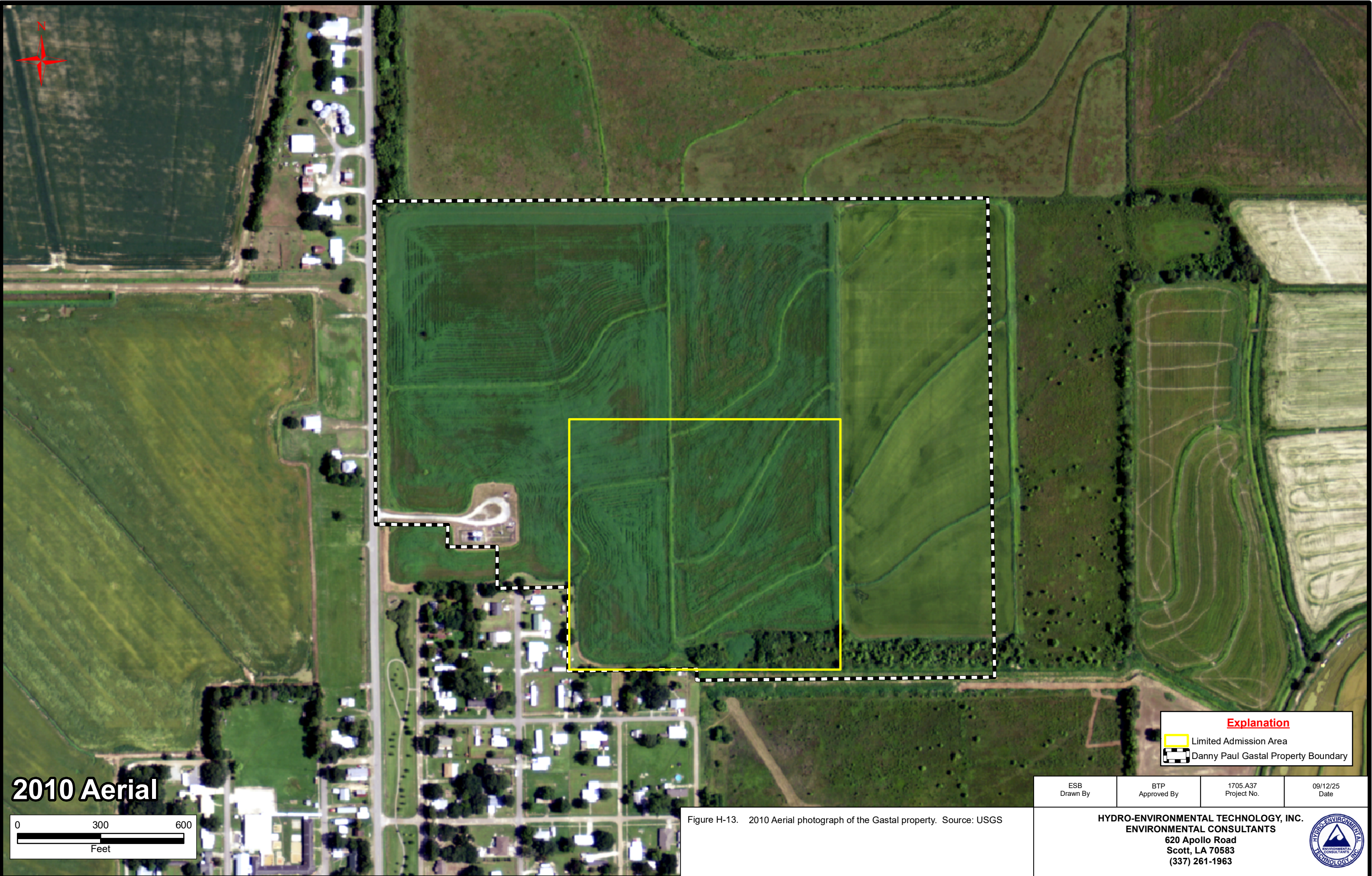


Explanation	
	Limited Admission Area
	Danny Paul Gastal Property Boundary

ESB Drawn By	BTP Approved By	1705.A37 Project No.	09/12/25 Date
<b>HYDRO-ENVIRONMENTAL TECHNOLOGY, INC.</b> ENVIRONMENTAL CONSULTANTS 620 Apollo Road Scott, LA 70583 (337) 261-1963			

Figure H-12. 2009 Aerial photograph of the Gastal property. Source: USGS





**2010 Aerial**

0 300 600  
Feet

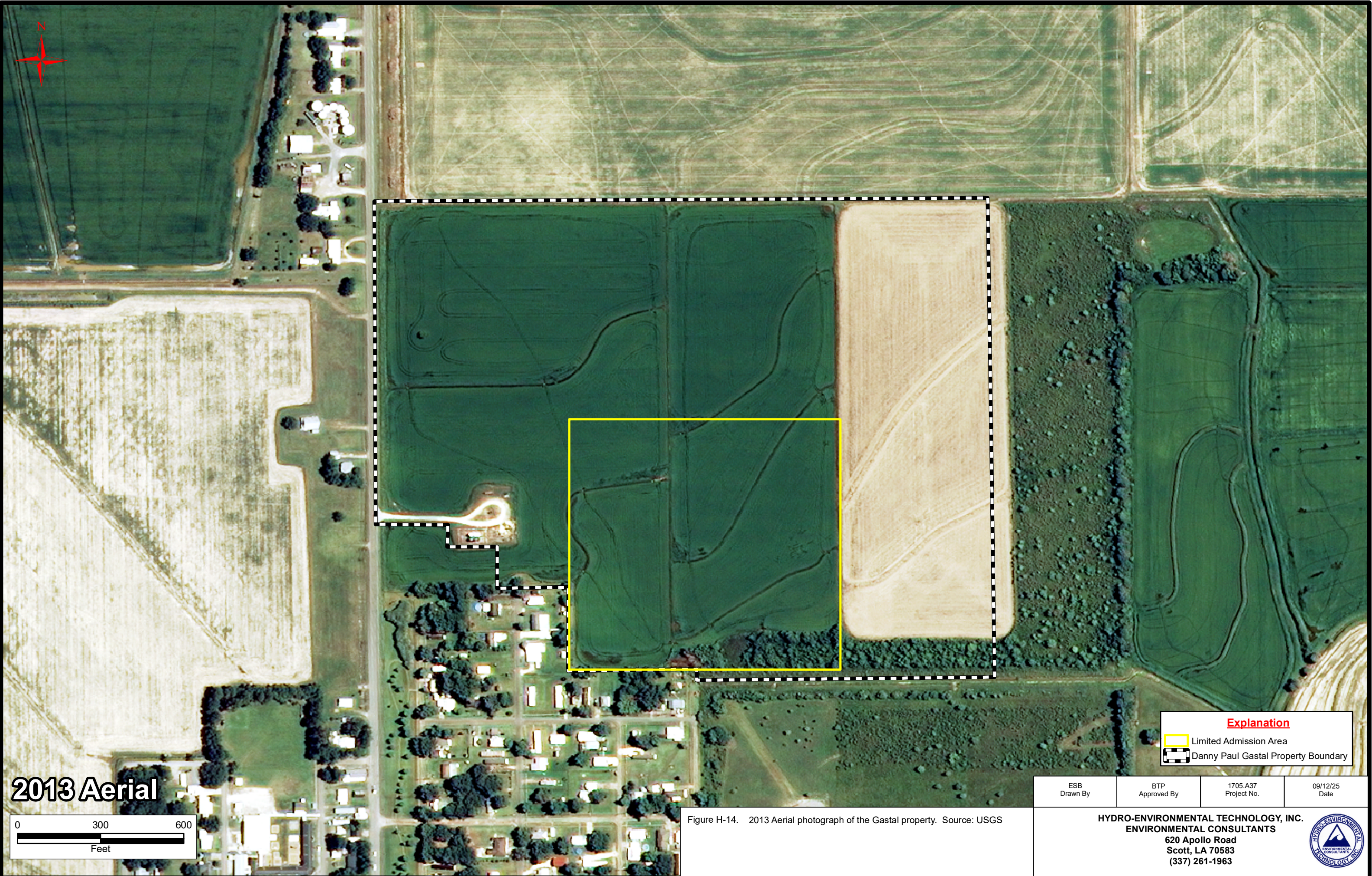
Explanation	
	Limited Admission Area
	Danny Paul Gastal Property Boundary

ESB Drawn By	BTP Approved By	1705.A37 Project No.	09/12/25 Date
HYDRO-ENVIRONMENTAL TECHNOLOGY, INC. ENVIRONMENTAL CONSULTANTS 620 Apollo Road Scott, LA 70583 (337) 261-1963			




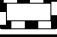
Figure H-13. 2010 Aerial photograph of the Gastal property. Source: USGS





**2013 Aerial**

0 300 600  
Feet

Explanation	
	Limited Admission Area
	Danny Paul Gastal Property Boundary

ESB Drawn By	BTP Approved By	1705.A37 Project No.	09/12/25 Date
-----------------	--------------------	-------------------------	------------------

Figure H-14. 2013 Aerial photograph of the Gastal property. Source: USGS

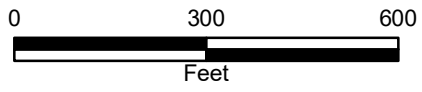
**HYDRO-ENVIRONMENTAL TECHNOLOGY, INC.**  
**ENVIRONMENTAL CONSULTANTS**  
620 Apollo Road  
Scott, LA 70583  
(337) 261-1963







2015 Aerial



Explanation	
	Limited Admission Area
	Danny Paul Gastal Property Boundary

ESB Drawn By	BTP Approved By	1705.A37 Project No.	09/12/25 Date
HYDRO-ENVIRONMENTAL TECHNOLOGY, INC. ENVIRONMENTAL CONSULTANTS 620 Apollo Road Scott, LA 70583 (337) 261-1963			

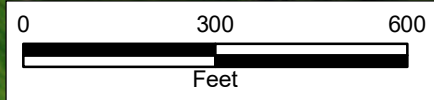


Figure H-15. 2015 Aerial photograph of the Gastal property. Source: USGS





2017 Aerial

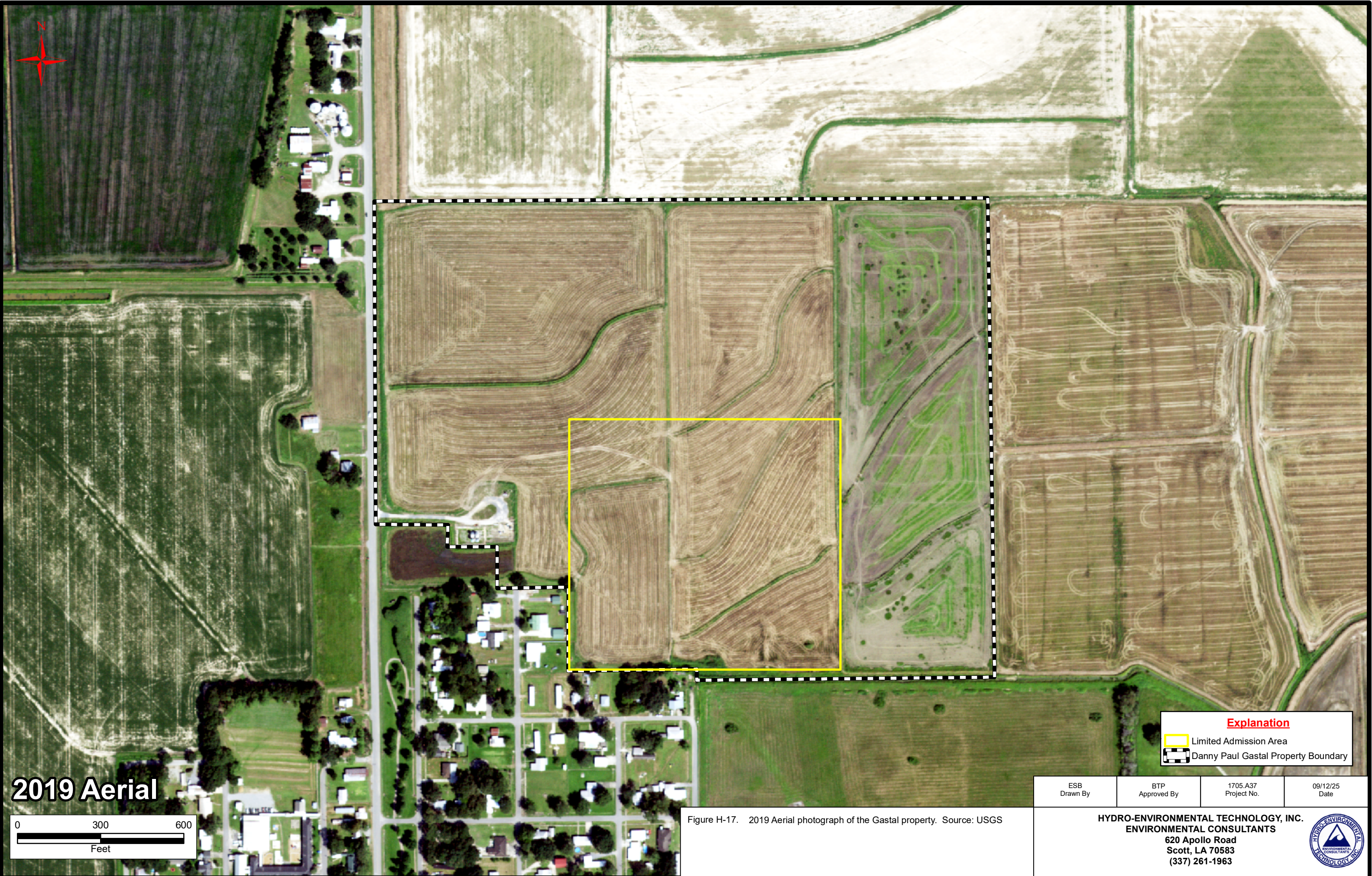


Explanation	
	Limited Admission Area
	Danny Paul Gastal Property Boundary

ESB Drawn By	BTP Approved By	1705.A37 Project No.	09/12/25 Date
<b>HYDRO-ENVIRONMENTAL TECHNOLOGY, INC.</b> ENVIRONMENTAL CONSULTANTS 620 Apollo Road Scott, LA 70583 (337) 261-1963			

Figure H-16. 2017 Aerial photograph of the Gastal property. Source: USGS





**2019 Aerial**

0 300 600  
Feet

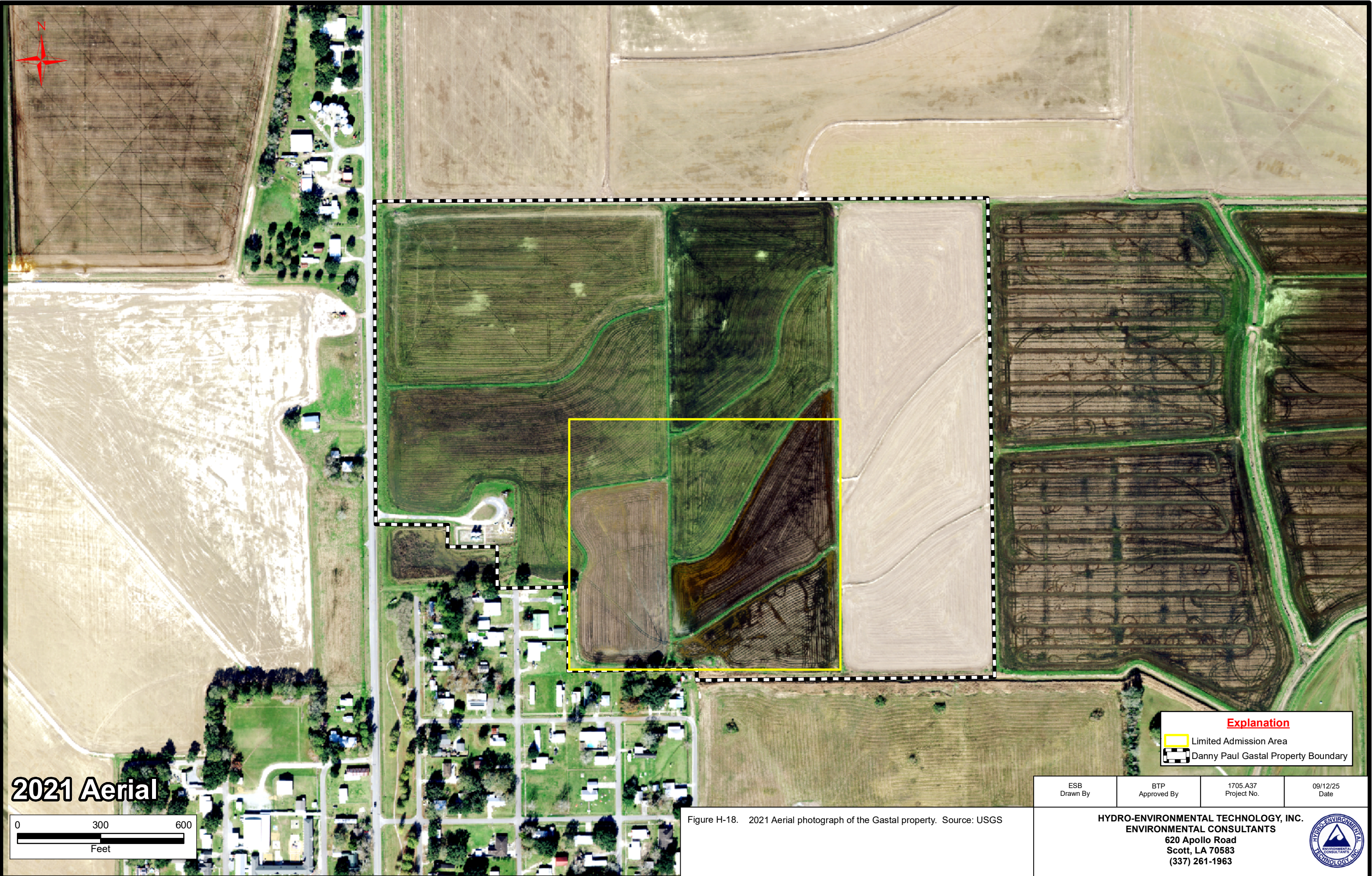
Explanation	
	Limited Admission Area
	Danny Paul Gastal Property Boundary

ESB Drawn By	BTP Approved By	1705.A37 Project No.	09/12/25 Date
<b>HYDRO-ENVIRONMENTAL TECHNOLOGY, INC.</b> <b>ENVIRONMENTAL CONSULTANTS</b> 620 Apollo Road Scott, LA 70583 (337) 261-1963			



Figure H-17. 2019 Aerial photograph of the Gastal property. Source: USGS





**2021 Aerial**

0 300 600  
Feet

Explanation	
	Limited Admission Area
	Danny Paul Gastal Property Boundary

ESB Drawn By	BTP Approved By	1705.A37 Project No.	09/12/25 Date
-----------------	--------------------	-------------------------	------------------

Figure H-18. 2021 Aerial photograph of the Gastal property. Source: USGS

**HYDRO-ENVIRONMENTAL TECHNOLOGY, INC.**  
**ENVIRONMENTAL CONSULTANTS**  
620 Apollo Road  
Scott, LA 70583  
(337) 261-1963


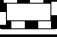






**2023 Aerial**

0 300 600  
Feet

Explanation	
	Limited Admission Area
	Danny Paul Gastal Property Boundary

ESB Drawn By	BTP Approved By	1705.A37 Project No.	09/12/25 Date
-----------------	--------------------	-------------------------	------------------

Figure H-19. 2023 Aerial photograph of the Gastal property. Source: USGS

**HYDRO-ENVIRONMENTAL TECHNOLOGY, INC.**  
**ENVIRONMENTAL CONSULTANTS**  
620 Apollo Road  
Scott, LA 70583  
(337) 261-1963

