

**TRACT 46052 - Avoyelles Parish School Board and Concordia Parish School Board  
- Avoyelles Parish, Louisiana**

The State Mineral and Energy Board acting on behalf of the Avoyelles Parish School Board and Concordia Parish School Board, pursuant to Resolution(s) adopted by that (those) body(ies) and in accordance with Louisiana Revised Statutes 30:121-136 and 151-156, as amended, and Article XIV, Section 16(A) (9) and (B) of the Louisiana Constitution of 1974, as same may be continued and promulgated in proper statutory form and, further, amended from time to time, advertises the lands not under mineral lease on May 13, 2026, excluding the beds and bottoms of all navigable water bodies located within the following: All or a portion of Section 22 and 20 and 16 and 17 and 8 and 9 and 21 and 15 and 10, Township 01 North, Range 07 East in Avoyelles Parish, Louisiana, All of Section 16, Township 1 North, Range 7 East, Avoyelles Parish Louisiana, excluding beds and bottoms of all navigable waters located in said section, containing approximately **639.20 acres**, all as more particularly outlined on a plat on file in the Office of Mineral Resources, Department of Natural Resources. All bearings, distances and coordinates are based on Louisiana Coordinate System of 1927, (North or South Zone).

NOTE: The above description of the Tract nominated for lease has been provided and corrected, where required, exclusively by the nomination party. Any mineral lease selected from this Tract and awarded by the Louisiana State Mineral and Energy Board shall be without warranty of any kind, either express, implied, or statutory, including, but not limited to, the implied warranties of merchantability and fitness for a particular purpose. Should the mineral lease awarded by the Louisiana State Mineral and Energy Board be subsequently modified, cancelled or abrogated due to the existence of conflicting leases, operating agreements, private claims or other future obligations or conditions which may affect all or any portion of the leased Tract, it shall not relieve the Lessee of the obligation to pay any bonus due thereon to the Louisiana State Mineral and Energy Board, nor shall the Louisiana State Mineral and Energy Board be obligated to refund any consideration paid by the Lessor prior to such modification, cancellation, or abrogation, including, but not limited to, bonuses, rentals and royalties.

NOTE: Lessor acknowledges that the ownership is 92.06% to Avoyelles Parish and 7.94% to Concordia Parish and Lessee is authorized and directed to pay any and all rentals and royalties which may accrue under the terms of this lease to said School Boards separately and respectively in the following proportions: Avoyelles Parish School Board - 92.06% and Concordia Parish School Board - 7.94%.

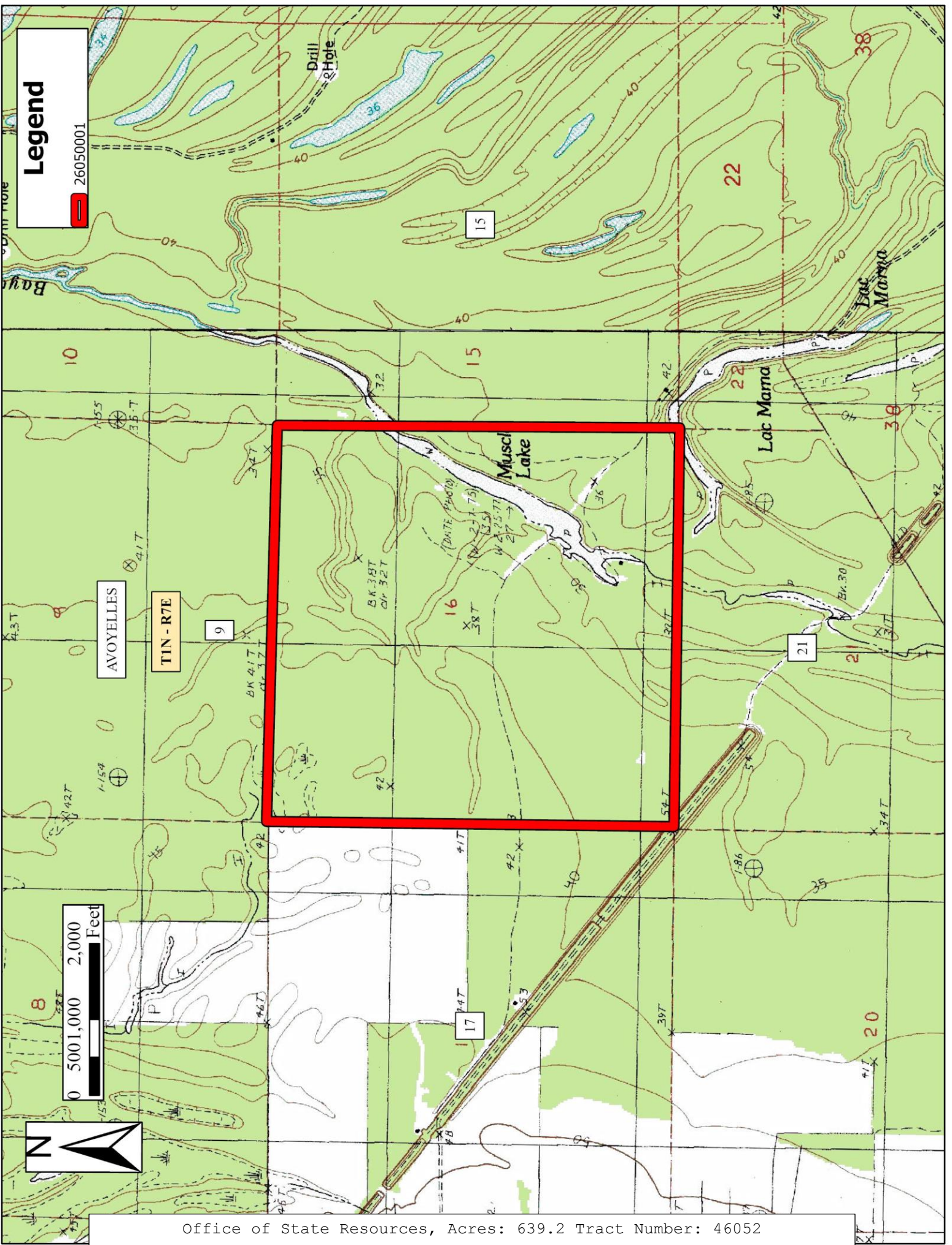
NOTE: Minimum royalty required by the Avoyelles Parish School Board and the Concordia Parish School Board is 1/5 or 20%.

Applicant: BR PRODUCTION GROUP to Agency and by Resolution from the Avoyelles Parish School Board and Concordia Parish School Board authorizing the Mineral Board to act in its behalf

Bidder	Cash Payment	Price/Acre	Rental	Oil	Gas	Other

**Legend**

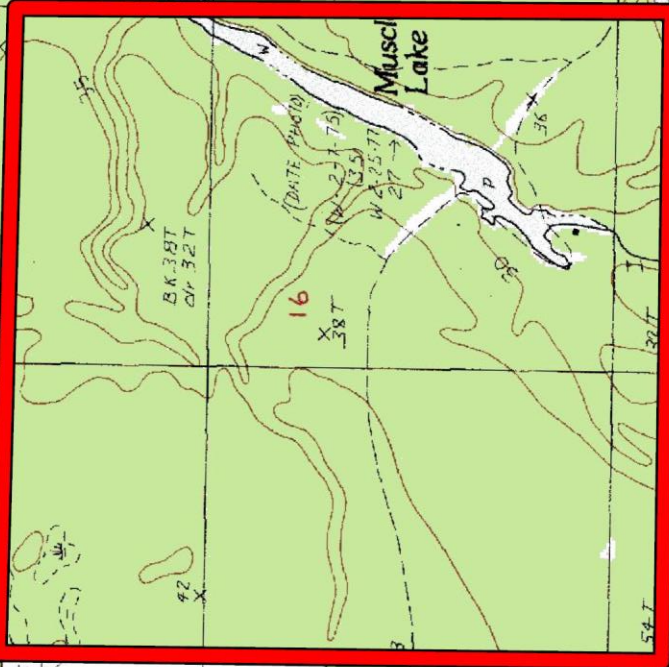
26050001



AVOYELLES

TIN - R7E

9



Musci Lake

Lac Mamma