

TRACT 46053 - Iberia Parish, Louisiana

All of the lands now or formerly constituting the beds and bottoms of all water bodies of every nature and description as to which title is vested in the State of Louisiana, together with all islands arising therein and other lands formed by accretion or by reliction, where allowed by law, excepting tax adjudicated lands, and not presently under mineral lease on June 10, 2026, situated in Iberia Parish, Louisiana, and more particularly described as follows: Beginning at a point having Coordinates of X = 1,952,768.81 and Y = 495,791.40; thence East 11,785.71 feet to a point having Coordinates of X = 1,964,554.52 and Y = 495,791.40; thence South 9,240.00 feet to a point having Coordinates of X = 1,964,554.52 and Y = 486,551.40; thence West 11,785.71 feet to a point having Coordinates of X = 1,952,768.81 and Y = 486,551.40; thence North 9,240.00 feet to the point of beginning, **LESS AND EXCEPT** any right, title, and interest in lands owned by and not under lease from the State of Louisiana, on behalf of the Iberia Parish School Board, situated in Section 16, Township 12 South, Range 10 East, Iberia Parish, Louisiana, contained within the above described tract, (This lease includes only waterbottoms claimed and owned by the state and specifically excludes any land which the state may claim or own and to which the mineral rights are vested in the state), containing approximately **2,107 acres**, all as more particularly outlined on a plat on file in the Office of State Resources, Department of Conservation and Energy. All bearings, distances and coordinates are based on Louisiana Coordinate System of 1927, (North or South Zone), where applicable.

NOTE: The above description of the Tract nominated for lease has been provided and corrected, where required, exclusively by the nomination party. Any mineral lease selected from this Tract and awarded by the Louisiana State Mineral and Energy Board shall be without warranty of any kind, either express, implied, or statutory, including, but not limited to, the implied warranties of merchantability and fitness for a particular purpose. Should the mineral lease awarded by the Louisiana State Mineral and Energy Board be subsequently modified, cancelled or abrogated due to the existence of conflicting leases, operating agreements, private claims or other future obligations or conditions which may affect all or any portion of the leased Tract, it shall not relieve the Lessee of the obligation to pay any bonus due thereon to the Louisiana State Mineral and Energy Board, nor shall the Louisiana State Mineral and Energy Board be obligated to refund any consideration paid by the Lessor prior to such modification, cancellation, or abrogation, including, but not limited to, bonuses, rentals and royalties.

NOTE: This acreage is entirely within the boundary of the Atchafalaya Basin Legal Area.

NOTE: The State of Louisiana does hereby reserve, and this lease shall be subject to, the imprescriptible right of surface use in the nature of a servitude in favor of the Department of Conservation and Energy, including its Offices and Commissions, for the sole purpose of implementing, constructing, servicing and maintaining approved coastal zone management

and/or restoration projects. Utilization of any and all rights derived under this lease by the mineral lessee, its agents, successors or assigns, shall not interfere with nor hinder the reasonable surface use by the Department of Conservation and Energy, its Offices or Commissions, as herein above reserved.

Applicant: HAROLD J. ANDERSON, INC.

Bidder	Cash Payment	Price/Acre	Rental	Oil	Gas	Other

Legend

26060002



CATFISH BAYOU

BAYOU COWAN

SMITH BAYOU

GRAND LAKE

IBERIA

T12S - R10E

P.O.B.



TRACT 46054 - Iberia Parish, Louisiana

All of the lands now or formerly constituting the beds and bottoms of all water bodies of every nature and description as to which title is vested in the State of Louisiana, together with all islands arising therein and other lands formed by accretion or by reliction, where allowed by law, excepting tax adjudicated lands, and not presently under mineral lease on June 10, 2026, situated in Iberia Parish, Louisiana, and more particularly described as follows: Beginning at a point having Coordinates of X = 1,983,034.52 and Y = 495,791.40; thence South 18,480.00 feet to a point having Coordinates of X = 1,983,034.52 and Y = 477,311.40; thence West 18,480.00 feet to a point having Coordinates of X = 1,964,554.52 and Y = 477,311.40; thence North 18,480.00 feet to a point having Coordinates of X = 1,964,554.52 and Y = 495,791.40; thence East 18,480.00 feet to the point of beginning, (This tract includes only waterbottoms claimed and owned by the state and specifically excludes any portion of the above described tract that lies inside of the Attakapas Island Wildlife Management Area), containing approximately **991 acres**, all as more particularly outlined on a plat on file in the Office of State Resources, Department of Conservation and Energy. All bearings, distances and coordinates are based on Louisiana Coordinate System of 1927, (North or South Zone), where applicable.

NOTE: The above description of the Tract nominated for lease has been provided and corrected, where required, exclusively by the nomination party. Any mineral lease selected from this Tract and awarded by the Louisiana State Mineral and Energy Board shall be without warranty of any kind, either express, implied, or statutory, including, but not limited to, the implied warranties of merchantability and fitness for a particular purpose. Should the mineral lease awarded by the Louisiana State Mineral and Energy Board be subsequently modified, cancelled or abrogated due to the existence of conflicting leases, operating agreements, private claims or other future obligations or conditions which may affect all or any portion of the leased Tract, it shall not relieve the Lessee of the obligation to pay any bonus due thereon to the Louisiana State Mineral and Energy Board, nor shall the Louisiana State Mineral and Energy Board be obligated to refund any consideration paid by the Lessor prior to such modification, cancellation, or abrogation, including, but not limited to, bonuses, rentals and royalties.

NOTE: This acreage is entirely within the boundary of the Atchafalaya Basin Legal Area.

NOTE: The State of Louisiana does hereby reserve, and this lease shall be subject to, the imprescriptible right of surface use in the nature of a servitude in favor of the Department of Conservation and Energy, including its Offices and Commissions, for the sole purpose of implementing, constructing, servicing and maintaining approved coastal zone management and/or restoration projects. Utilization of any and all rights derived under this lease by the mineral lessee, its agents, successors or assigns, shall not interfere with nor hinder the reasonable surface use by the Department

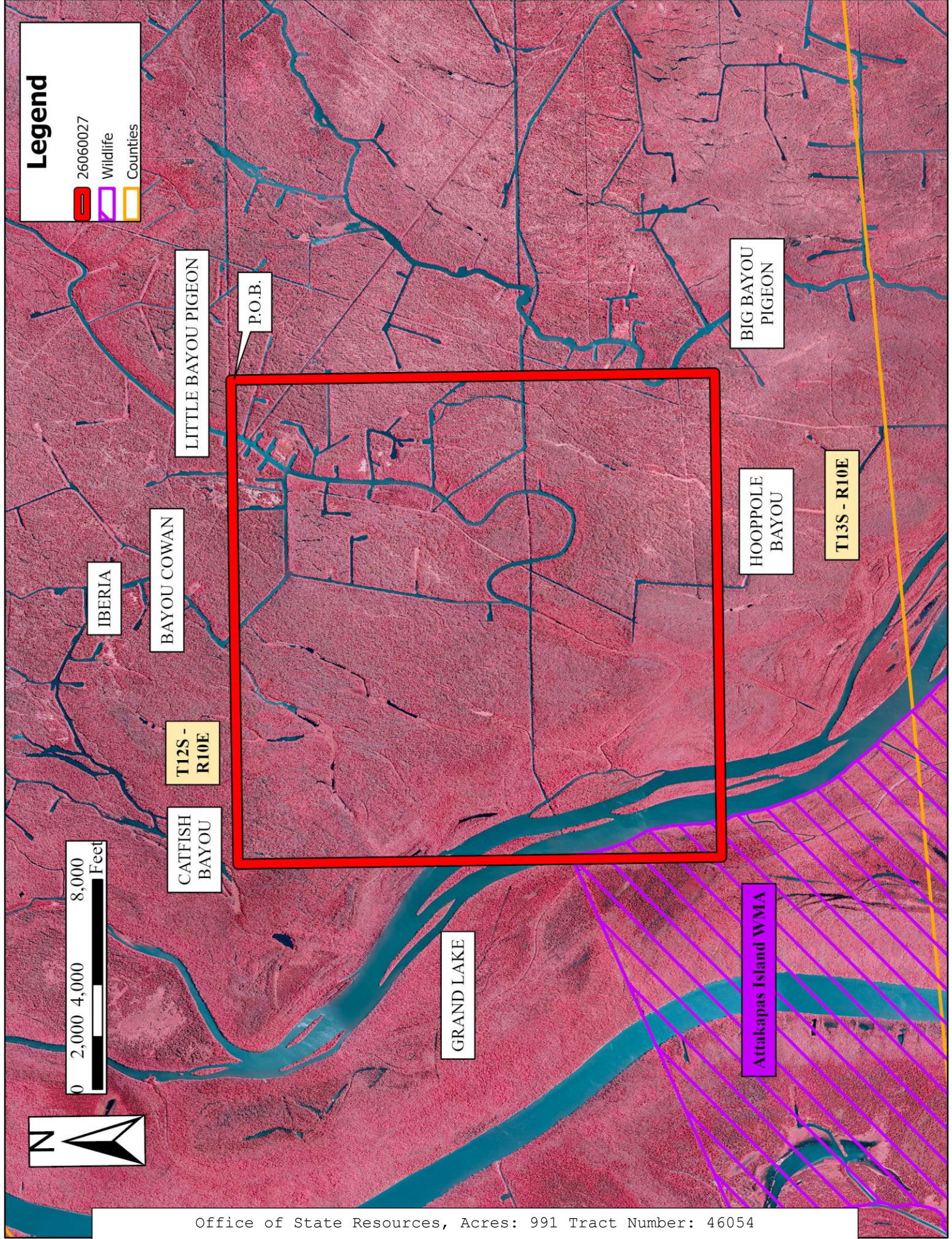
of Conservation and Energy, its Offices or Commissions, as herein above reserved.

Applicant: HAROLD J. ANDERSON, INC.

Bidder	Cash Payment	Price/Acre	Rental	Oil	Gas	Other

Legend

- 26060027
- Wildlife
- Counties



IBERIA
BAYOU COWAN
LITTLE BAYOU PIGEON

T12S - R10E

CATFISH BAYOU

P.O.B.

GRAND LAKE

BIG BAYOU PIGEON

HOOPPOLE BAYOU

T13S - R10E

Attakapas Island WMA

TRACT 46055 - Iberia Parish, Louisiana

All of the lands now or formerly constituting the beds and bottoms of all water bodies of every nature and description as to which title is vested in the State of Louisiana, together with all islands arising therein and other lands formed by accretion or by reliction, where allowed by law, excepting tax adjudicated lands, and not presently under mineral lease on June 10, 2026, situated in Iberia Parish, Louisiana, and more particularly described as follows: Beginning at a point having Coordinates of X = 2,001,514.52 and Y = 495,791.40; thence South 18,480.00 feet to a point having Coordinates of X = 2,001,514.52 and Y = 477,311.40; thence West 18,480.00 feet to a point having Coordinates of X = 1,983,034.52 and Y = 477,311.40; thence North 18,480.00 feet to a point having Coordinates of X = 1,983,034.52 and Y = 495,791.40; thence East 18,480.00 feet to the point of beginning, **LESS AND EXCEPT** any right, title, and interest in lands owned by and not under lease from the State of Louisiana, on behalf of the Iberia Parish School Board, situated in Section 16, Township 12 South, Range 10 East, Iberia Parish, Louisiana, contained within the above described tract, (This lease includes only waterbottoms claimed and owned by the state and specifically excludes any land which the state may claim or own and to which the mineral rights are vested in the state), containing approximately **164 acres**, all as more particularly outlined on a plat on file in the Office of State Resources, Department of Conservation and Energy. All bearings, distances and coordinates are based on Louisiana Coordinate System of 1927, (North or South Zone), where applicable.

NOTE: The above description of the Tract nominated for lease has been provided and corrected, where required, exclusively by the nomination party. Any mineral lease selected from this Tract and awarded by the Louisiana State Mineral and Energy Board shall be without warranty of any kind, either express, implied, or statutory, including, but not limited to, the implied warranties of merchantability and fitness for a particular purpose. Should the mineral lease awarded by the Louisiana State Mineral and Energy Board be subsequently modified, cancelled or abrogated due to the existence of conflicting leases, operating agreements, private claims or other future obligations or conditions which may affect all or any portion of the leased Tract, it shall not relieve the Lessee of the obligation to pay any bonus due thereon to the Louisiana State Mineral and Energy Board, nor shall the Louisiana State Mineral and Energy Board be obligated to refund any consideration paid by the Lessor prior to such modification, cancellation, or abrogation, including, but not limited to, bonuses, rentals and royalties.

NOTE: This acreage is entirely within the boundary of the Atchafalaya Basin Legal Area.

NOTE: The State of Louisiana does hereby reserve, and this lease shall be subject to, the imprescriptible right of surface use in the nature of a servitude in favor of the Department of Conservation and Energy, including its Offices and Commissions, for the sole purpose of implementing, constructing, servicing and maintaining approved coastal zone management

and/or restoration projects. Utilization of any and all rights derived under this lease by the mineral lessee, its agents, successors or assigns, shall not interfere with nor hinder the reasonable surface use by the Department of Conservation and Energy, its Offices or Commissions, as herein above reserved.

Applicant: HAROLD J. ANDERSON, INC.

Bidder	Cash Payment	Price/Acre	Rental	Oil	Gas	Other



Legend



P.O.B.

LITTLE
BAYOU
MALLET

IBERIA

T12S - R11E

T13S - R11E

BIG BAYOU
PIGEON



TRACT 46056 - Iberia Parish, Louisiana

All of the lands now or formerly constituting the beds and bottoms of all water bodies of every nature and description as to which title is vested in the State of Louisiana, together with all islands arising therein and other lands formed by accretion or by reliction, where allowed by law, excepting tax adjudicated lands, and not presently under mineral lease on June 10, 2026, situated in Iberia Parish, Louisiana, and more particularly described as follows: Beginning at a point having Coordinates of X = 2,019,994.52 and Y = 495,791.40; thence South 18,480.00 feet to a point having Coordinates of X = 2,019,994.52 and Y = 477,311.40; thence West 18,480.00 feet to a point having Coordinates of X = 2,001,514.52 and Y = 477,311.40; thence North 18,480.00 feet to a point having Coordinates of X = 2,001,514.52 and Y = 495,791.40; thence East 18,480.00 feet to the point of beginning, containing approximately **266 acres**, all as more particularly outlined on a plat on file in the Office of State Resources, Department of Conservation and Energy. All bearings, distances and coordinates are based on Louisiana Coordinate System of 1927, (North or South Zone), where applicable.

NOTE: The above description of the Tract nominated for lease has been provided and corrected, where required, exclusively by the nomination party. Any mineral lease selected from this Tract and awarded by the Louisiana State Mineral and Energy Board shall be without warranty of any kind, either express, implied, or statutory, including, but not limited to, the implied warranties of merchantability and fitness for a particular purpose. Should the mineral lease awarded by the Louisiana State Mineral and Energy Board be subsequently modified, cancelled or abrogated due to the existence of conflicting leases, operating agreements, private claims or other future obligations or conditions which may affect all or any portion of the leased Tract, it shall not relieve the Lessee of the obligation to pay any bonus due thereon to the Louisiana State Mineral and Energy Board, nor shall the Louisiana State Mineral and Energy Board be obligated to refund any consideration paid by the Lessor prior to such modification, cancellation, or abrogation, including, but not limited to, bonuses, rentals and royalties.

NOTE: This acreage is entirely within the boundary of the Atchafalaya Basin Legal Area.

NOTE: The State of Louisiana does hereby reserve, and this lease shall be subject to, the imprescriptible right of surface use in the nature of a servitude in favor of the Department of Conservation and Energy, including its Offices and Commissions, for the sole purpose of implementing, constructing, servicing and maintaining approved coastal zone management and/or restoration projects. Utilization of any and all rights derived under this lease by the mineral lessee, its agents, successors or assigns, shall not interfere with nor hinder the reasonable surface use by the Department of Conservation and Energy, its Offices or Commissions, as herein above reserved.

Applicant: HAROLD J. ANDERSON, INC.

Bidder	Cash Payment	Price/ Acre	Rental	Oil	Gas	Other

Legend



P.O.B.

STRINGER
BAYOU

T12S - R12E

T13S -
R12E

BAYOU
FOURCHE

T13S -
R11E

IBERIA

BIG BAYOU
MALLET

BAYOU
POSTILLION

BAYOU
MALLET

LITTLE
BAYOU
MALLET

T12S - R11E



TRACT 46057 - Assumption Iberia and Iberville Parishes, Louisiana

All of the lands now or formerly constituting the beds and bottoms of all water bodies of every nature and description as to which title is vested in the State of Louisiana, together with all islands arising therein and other lands formed by accretion or by reliction, where allowed by law, excepting tax adjudicated lands, and not presently under mineral lease on June 10, 2026, situated in Assumption Iberia and Iberville Parishes, Louisiana, and more particularly described as follows: Beginning at a point having Coordinates of X = 2,038,474.52 and Y = 495,791.40; thence South 18,480.00 feet to a point having Coordinates of X = 2,038,474.52 and Y = 477,311.40; thence West 18,480.00 feet to a point having Coordinates of X = 2,019,994.52 and Y = 477,311.40; thence North 18,480.00 feet to a point having Coordinates of X = 2,019,994.52 and Y = 495,791.40; thence East 18,480.00 feet to the point of beginning, beginning, **LESS AND EXCEPT** that portion, if any, of the above described tract that may lie within of the boundary of the Atchafalaya Basin, and **LESS AND EXCEPT** any right, title, and interest in lands owned by and not under lease from the State of Louisiana, on behalf of the Assumption Parish, Iberia Parish and Iberville Parish School Boards, situated in Section 16, Township 12 South, Range 12 East, Assumption, Iberia, and Iberville Parishes, Louisiana, contained within the above described tract, (This lease includes only waterbottoms claimed and owned by the state and specifically excludes any land which the state may claim or own and to which the mineral rights are vested in the state), containing approximately **314 acres**, all as more particularly outlined on a plat on file in the Office of State Resources, Department of Conservation and Energy. All bearings, distances and coordinates are based on Louisiana Coordinate System of 1927, (North or South Zone), where applicable.

NOTE: The above description of the Tract nominated for lease has been provided and corrected, where required, exclusively by the nomination party. Any mineral lease selected from this Tract and awarded by the Louisiana State Mineral and Energy Board shall be without warranty of any kind, either express, implied, or statutory, including, but not limited to, the implied warranties of merchantability and fitness for a particular purpose. Should the mineral lease awarded by the Louisiana State Mineral and Energy Board be subsequently modified, cancelled or abrogated due to the existence of conflicting leases, operating agreements, private claims or other future obligations or conditions which may affect all or any portion of the leased Tract, it shall not relieve the Lessee of the obligation to pay any bonus due thereon to the Louisiana State Mineral and Energy Board, nor shall the Louisiana State Mineral and Energy Board be obligated to refund any consideration paid by the Lessor prior to such modification, cancellation, or abrogation, including, but not limited to, bonuses, rentals and royalties.

NOTE: The State of Louisiana does hereby reserve, and this lease shall be subject to, the imprescriptible right of surface use in the nature of a servitude in favor of the Department of Conservation and Energy, including its Offices and Commissions, for the sole purpose of implementing, constructing, servicing and maintaining approved coastal zone management

and/or restoration projects. Utilization of any and all rights derived under this lease by the mineral lessee, its agents, successors or assigns, shall not interfere with nor hinder the reasonable surface use by the Department of Conservation and Energy, its Offices or Commissions, as herein above reserved.

Applicant: HAROLD J. ANDERSON, INC.

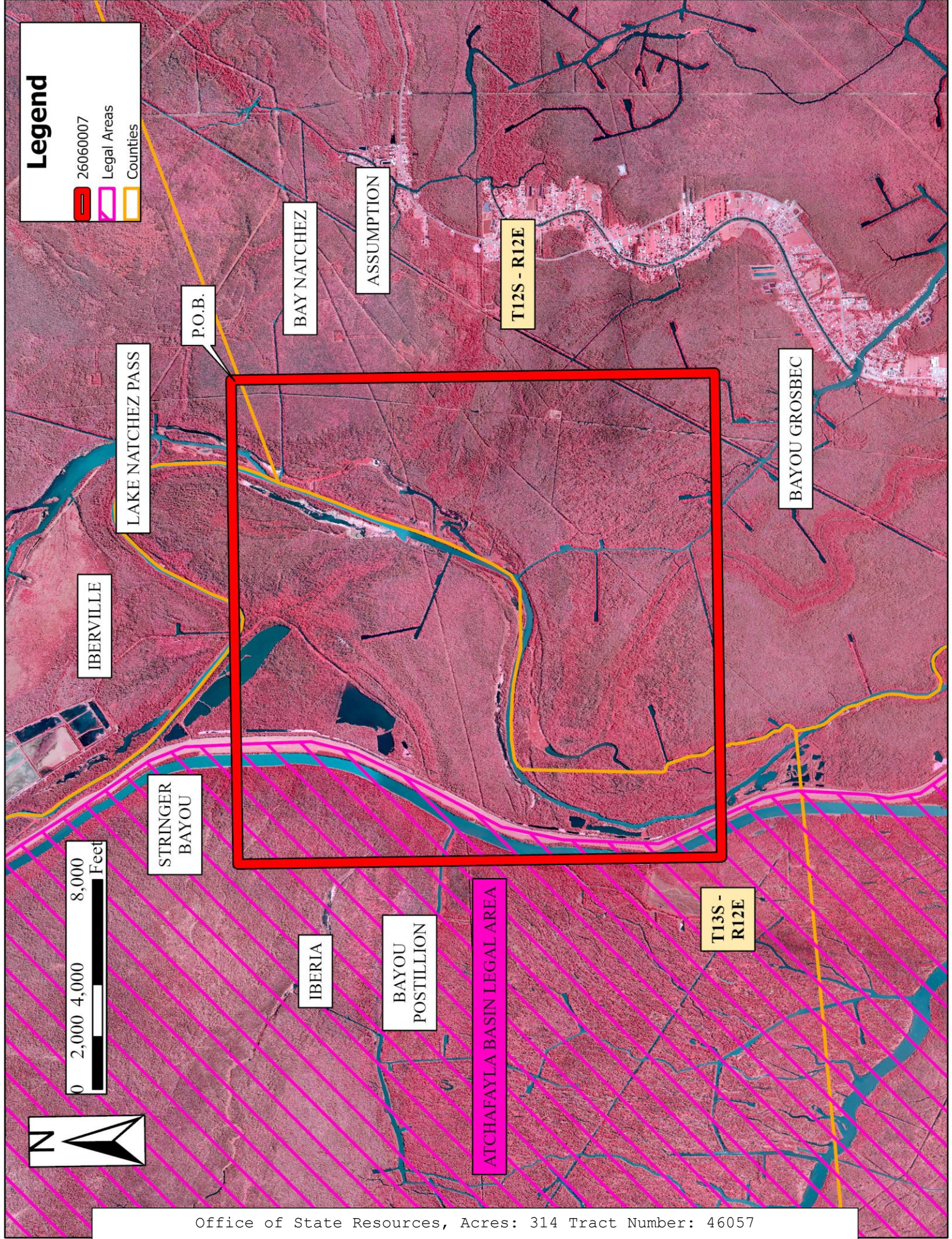
Bidder	Cash Payment	Price/Acre	Rental	Oil	Gas	Other

Legend

26060007

Legal Areas

Counties



TRACT 46058 - Assumption Iberia and Iberville Parishes, Louisiana

All of the lands now or formerly constituting the beds and bottoms of all water bodies of every nature and description as to which title is vested in the State of Louisiana, together with all islands arising therein and other lands formed by accretion or by reliction, where allowed by law, excepting tax adjudicated lands, and not presently under mineral lease on June 10, 2026, situated in Assumption Iberia and Iberville Parishes, Louisiana, and more particularly described as follows: Beginning at a point having Coordinates of X = 2,038,474.52 and Y = 495,791.40; thence South 18,480.00 feet to a point having Coordinates of X = 2,038,474.52 and Y = 477,311.40; thence West 18,480.00 feet to a point having Coordinates of X = 2,019,994.52 and Y = 477,311.40; thence North 18,480.00 feet to a point having Coordinates of X = 2,019,994.52 and Y = 495,791.40; thence East 18,480.00 feet to the point of beginning, **LESS AND EXCEPT** that portion, if any, of the above described tract that may lie outside of the boundary of the Atchafalaya Basin, and **LESS AND EXCEPT** any right, title, and interest in lands owned by and not under lease from the State of Louisiana, on behalf of the Assumption Parish, Iberia Parish and Iberville Parish School Boards, situated in Section 16, Township 12 South, Range 12 East, Assumption, Iberia, and Iberville Parishes, Louisiana, contained within the above described tract, (This lease includes only waterbottoms claimed and owned by the state and specifically excludes any land which the state may claim or own and to which the mineral rights are vested in the state), containing approximately **4 acres**, all as more particularly outlined on a plat on file in the Office of Mineral Resources, Department of Natural Resources. All bearings, distances and coordinates are based on Louisiana Coordinate System of 1927, (North or South Zone), where applicable.

NOTE: The above description of the Tract nominated for lease has been provided and corrected, where required, exclusively by the nomination party. Any mineral lease selected from this Tract and awarded by the Louisiana State Mineral and Energy Board shall be without warranty of any kind, either express, implied, or statutory, including, but not limited to, the implied warranties of merchantability and fitness for a particular purpose. Should the mineral lease awarded by the Louisiana State Mineral and Energy Board be subsequently modified, cancelled or abrogated due to the existence of conflicting leases, operating agreements, private claims or other future obligations or conditions which may affect all or any portion of the leased Tract, it shall not relieve the Lessee of the obligation to pay any bonus due thereon to the Louisiana State Mineral and Energy Board, nor shall the Louisiana State Mineral and Energy Board be obligated to refund any consideration paid by the Lessor prior to such modification, cancellation, or abrogation, including, but not limited to, bonuses, rentals and royalties.

NOTE: This acreage is entirely within the boundary of the Atchafalaya Basin Legal Area.

NOTE: The State of Louisiana does hereby reserve, and this lease shall be subject to, the imprescriptible right of surface use in the nature of a

servitude in favor of the Department of Natural Resources, including its Offices and Commissions, for the sole purpose of implementing, constructing, servicing and maintaining approved coastal zone management and/or restoration projects. Utilization of any and all rights derived under this lease by the mineral lessee, its agents, successors or assigns, shall not interfere with nor hinder the reasonable surface use by the Department of Natural Resources, its Offices or Commissions, as herein above reserved.

Applicant: HAROLD J. ANDERSON, INC.

Bidder	Cash Payment	Price/Acre	Rental	Oil	Gas	Other

Legend

26060033

- Counties
- Legal Areas



P.O.B.

ASSUMPTION

BAYOU GROSBEC

IBERVILLE

T12S - R12E

LITTLE
GODDEL
BAYOU

STRINGER
BAYOU



BIG
BAYOU
MALLET

BAYOU
POSTILLION

IBERIA

ATCHALAYA BASIN LEGAL AREA

TRACT 46059 - Assumption and Iberville Parishes, Louisiana

All of the lands now or formerly constituting the beds and bottoms of all water bodies of every nature and description as to which title is vested in the State of Louisiana, together with all islands arising therein and other lands formed by accretion or by reliction, where allowed by law, excepting tax adjudicated lands, and not presently under mineral lease on June 10, 2026, situated in Assumption and Iberville Parishes, Louisiana, and more particularly described as follows: Beginning at a point having Coordinates of X = 2,056,954.52 and Y = 495,791.40; thence South 18,480.00 feet to a point having Coordinates of X = 2,056,954.52 and Y = 477,311.40; thence West 18,480.00 feet to a point having Coordinates of X = 2,038,474.52 and Y = 477,311.40; thence North 18,480.00 feet to a point having Coordinates of X = 2,038,474.52 and Y = 495,791.40; thence East 18,480.00 feet to the point of beginning, (This lease includes only waterbottoms claimed and owned by the state and specifically excludes any land which the state may claim or own and to which the mineral rights are vested in the state), containing approximately **86 acres**, all as more particularly outlined on a plat on file in the Office of State Resources, Department of Conservation and Energy. All bearings, distances and coordinates are based on Louisiana Coordinate System of 1927, (North or South Zone), where applicable.

NOTE: The above description of the Tract nominated for lease has been provided and corrected, where required, exclusively by the nomination party. Any mineral lease selected from this Tract and awarded by the Louisiana State Mineral and Energy Board shall be without warranty of any kind, either express, implied, or statutory, including, but not limited to, the implied warranties of merchantability and fitness for a particular purpose. Should the mineral lease awarded by the Louisiana State Mineral and Energy Board be subsequently modified, cancelled or abrogated due to the existence of conflicting leases, operating agreements, private claims or other future obligations or conditions which may affect all or any portion of the leased Tract, it shall not relieve the Lessee of the obligation to pay any bonus due thereon to the Louisiana State Mineral and Energy Board, nor shall the Louisiana State Mineral and Energy Board be obligated to refund any consideration paid by the Lessor prior to such modification, cancellation, or abrogation, including, but not limited to, bonuses, rentals and royalties.

NOTE: The State of Louisiana does hereby reserve, and this lease shall be subject to, the imprescriptible right of surface use in the nature of a servitude in favor of the Department of Conservation and Energy, including its Offices and Commissions, for the sole purpose of implementing, constructing, servicing and maintaining approved coastal zone management and/or restoration projects. Utilization of any and all rights derived under this lease by the mineral lessee, its agents, successors or assigns, shall not interfere with nor hinder the reasonable surface use by the Department of Conservation and Energy, its Offices or Commissions, as herein above reserved.

Applicant: HAROLD J. ANDERSON, INC.

Bidder	Cash Payment	Price/ Acre	Rental	Oil	Gas	Other

Legend

26060009
Counties



0 2,000 4,000 8,000
Feet

ASSUMPTION

IBERVILLE

P.O.B.

BAYOU CORNE

T12S - R13E

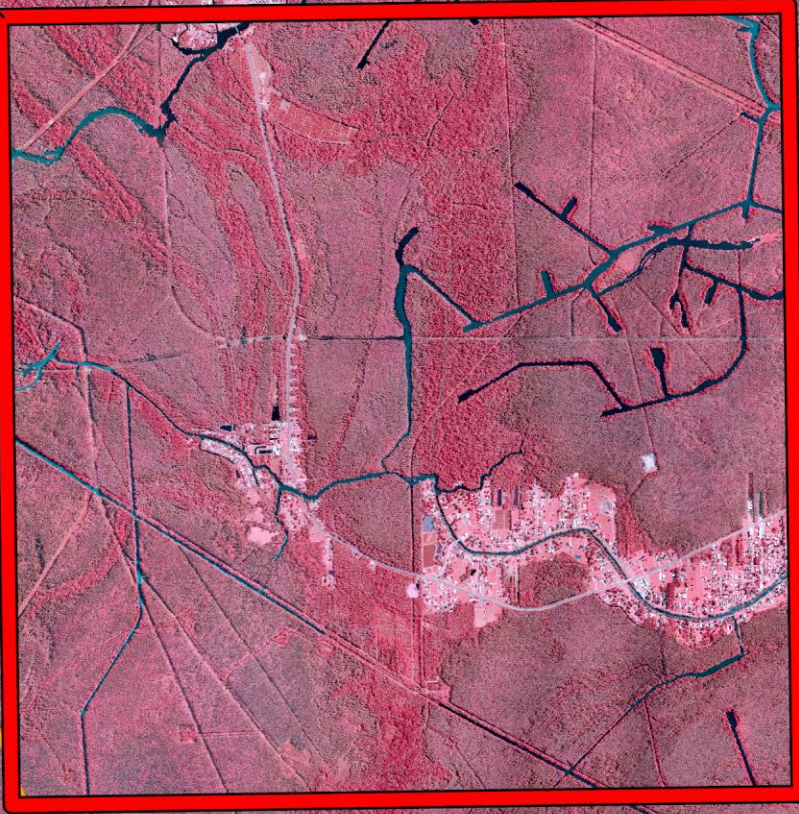
GRAND BAYOU

LITTLE
GRAND BAYOU

T13S -
R13E

BAYOU
PIERRE
PART

T12S - R12E



TRACT 46060 - Iberia Parish, Louisiana

All of the lands now or formerly constituting the beds and bottoms of all water bodies of every nature and description as to which title is vested in the State of Louisiana, together with all islands arising therein and other lands formed by accretion or by reliction, where allowed by law, excepting tax adjudicated lands, and not presently under mineral lease on June 10, 2026, situated in Iberia Parish, Louisiana, and more particularly described as follows: Beginning a point having Coordinates of X = 1,952,768.81 and Y = 486,551.40; thence East 11,785.71 feet to a point having Coordinates of X = 1,964,554.52 and Y = 486,551.40; thence South 9,240.00 feet to a point having Coordinates of X = 1,964,554.52 and Y = 477,311.40; thence West 11,785.71 feet to a point having Coordinates of X = 1,952,768.81 and Y = 477,311.40; thence North 9,240.00 feet to the point of beginning, (This tract includes only waterbottoms claimed and owned by the state and specifically excludes any portion of the above described tract that lies inside of the Attakapas Island Wildlife Management Area), containing approximately **1,647 acres**, all as more particularly outlined on a plat on file in the Office of State Resources, Department of Conservation and Energy. All bearings, distances and coordinates are based on Louisiana Coordinate System of 1927, (North or South Zone), where applicable.

NOTE: The above description of the Tract nominated for lease has been provided and corrected, where required, exclusively by the nomination party. Any mineral lease selected from this Tract and awarded by the Louisiana State Mineral and Energy Board shall be without warranty of any kind, either express, implied, or statutory, including, but not limited to, the implied warranties of merchantability and fitness for a particular purpose. Should the mineral lease awarded by the Louisiana State Mineral and Energy Board be subsequently modified, cancelled or abrogated due to the existence of conflicting leases, operating agreements, private claims or other future obligations or conditions which may affect all or any portion of the leased Tract, it shall not relieve the Lessee of the obligation to pay any bonus due thereon to the Louisiana State Mineral and Energy Board, nor shall the Louisiana State Mineral and Energy Board be obligated to refund any consideration paid by the Lessor prior to such modification, cancellation, or abrogation, including, but not limited to, bonuses, rentals and royalties.

NOTE: This acreage is entirely within the boundary of the Atchafalaya Basin Legal Area.

NOTE: The State of Louisiana does hereby reserve, and this lease shall be subject to, the imprescriptible right of surface use in the nature of a servitude in favor of the Department of Conservation and Energy, including its Offices and Commissions, for the sole purpose of implementing, constructing, servicing and maintaining approved coastal zone management and/or restoration projects. Utilization of any and all rights derived under this lease by the mineral lessee, its agents, successors or assigns, shall not interfere with nor hinder the reasonable surface use by the Department

of Conservation and Energy, its Offices or Commissions, as herein above reserved.

Applicant: HAROLD J. ANDERSON, INC.

Bidder	Cash Payment	Price/Acre	Rental	Oil	Gas	Other

Legend

- 26060026
- Wildlife
- Counties

GRAND LAKE

SMITH BAYOU

IBERIA

T12S - R10E

Attakapas
Island WMA



P.O.B.

GRAND LAKE

T12S
-R9E



TRACT 46061 - Iberia and St. Mary Parishes, Louisiana

All of the lands now or formerly constituting the beds and bottoms of all water bodies of every nature and description as to which title is vested in the State of Louisiana, together with all islands arising therein and other lands formed by accretion or by reliction, where allowed by law, excepting tax adjudicated lands, and not presently under mineral lease on June 10, 2026, situated in Iberia and St. Mary Parishes, Louisiana, and more particularly described as follows: Beginning at a point located within Section 19, Township 12 South Range 9 East, having Coordinates of X = 1,916,500.00 and Y = 478,500.00; thence South 18,480.00 feet to a point having Coordinates of X = 1,916,500.00 and Y = 460,020.00; thence West 7,500.00 feet to a point having Coordinates of X = 1,909,000.00 and Y = 460,020.00; thence North 18,480.00 feet to a point having Coordinates of X = 1,909,000.00 and Y = 478,500.00; thence East 7,500.00 feet to the point of beginning, containing approximately **2,425 acres**, all as more particularly outlined on a plat on file in the Office of State Resources, Department of Conservation and Energy. All bearings, distances and coordinates are based on Louisiana Coordinate System of 1927, (North or South Zone), where applicable.

NOTE: The above description of the Tract nominated for lease has been provided and corrected, where required, exclusively by the nomination party. Any mineral lease selected from this Tract and awarded by the Louisiana State Mineral and Energy Board shall be without warranty of any kind, either express, implied, or statutory, including, but not limited to, the implied warranties of merchantability and fitness for a particular purpose. Should the mineral lease awarded by the Louisiana State Mineral and Energy Board be subsequently modified, cancelled or abrogated due to the existence of conflicting leases, operating agreements, private claims or other future obligations or conditions which may affect all or any portion of the leased Tract, it shall not relieve the Lessee of the obligation to pay any bonus due thereon to the Louisiana State Mineral and Energy Board, nor shall the Louisiana State Mineral and Energy Board be obligated to refund any consideration paid by the Lessor prior to such modification, cancellation, or abrogation, including, but not limited to, bonuses, rentals and royalties.

NOTE: The State of Louisiana does hereby reserve, and this lease shall be subject to, the imprescriptible right of surface use in the nature of a servitude in favor of the Department of Conservation and Energy, including its Offices and Commissions, for the sole purpose of implementing, constructing, servicing and maintaining approved coastal zone management and/or restoration projects. Utilization of any and all rights derived under this lease by the mineral lessee, its agents, successors or assigns, shall not interfere with nor hinder the reasonable surface use by the Department of Conservation and Energy, its Offices or Commissions, as herein above reserved.

Applicant: BOUDREAUX PROPERTIES, INC.

Bidder	Cash Payment	Price/ Acre	Rental	Oil	Gas	Other

Legend

- 26060001
- Counties

LAKE FAUSSE
POINTE

P.O.B.

IBERIA

T12S -
R8E

ST MARY

T13S - R8E



TRACT 46062 - Iberia and St. Martin Parishes, Louisiana

All of the lands now or formerly constituting the beds and bottoms of all water bodies of every nature and description as to which title is vested in the State of Louisiana, together with all islands arising therein and other lands formed by accretion or by reliction, where allowed by law, excepting tax adjudicated lands, and not presently under mineral lease on June 10, 2026, situated in Iberia and St. Martin Parishes, Louisiana, and more particularly described as follows: Beginning at a point having Coordinates of X = 1,983,034.52 and Y = 477,311.40; thence South 9,240.00 feet to a point having Coordinates of X = 1,983,034.52 and Y = 468,071.40; thence West 18,480.00 feet to a point having Coordinates of X = 1,964,554.52 and Y = 468,071.40, thence North 9,240.00 feet to a point having Coordinates of X = 1,964,554.52 and Y = 477,311.40, thence East 18,480.00 feet to the point of beginning, (This tract includes only waterbottoms claimed and owned by the state and specifically excludes any portion of the above described tract that lies inside of the Attakapas Island Wildlife Management Area), containing approximately **1,140 acres**, all as more particularly outlined on a plat on file in the Office of State Resources, Department of Conservation and Energy. All bearings, distances and coordinates are based on Louisiana Coordinate System of 1927, (North or South Zone), where applicable.

NOTE: The above description of the Tract nominated for lease has been provided and corrected, where required, exclusively by the nomination party. Any mineral lease selected from this Tract and awarded by the Louisiana State Mineral and Energy Board shall be without warranty of any kind, either express, implied, or statutory, including, but not limited to, the implied warranties of merchantability and fitness for a particular purpose. Should the mineral lease awarded by the Louisiana State Mineral and Energy Board be subsequently modified, cancelled or abrogated due to the existence of conflicting leases, operating agreements, private claims or other future obligations or conditions which may affect all or any portion of the leased Tract, it shall not relieve the Lessee of the obligation to pay any bonus due thereon to the Louisiana State Mineral and Energy Board, nor shall the Louisiana State Mineral and Energy Board be obligated to refund any consideration paid by the Lessor prior to such modification, cancellation, or abrogation, including, but not limited to, bonuses, rentals and royalties.

NOTE: This acreage is entirely within the boundary of the Atchafalaya Basin Legal Area.

NOTE: The State of Louisiana does hereby reserve, and this lease shall be subject to, the imprescriptible right of surface use in the nature of a servitude in favor of the Department of Conservation and Energy, including its Offices and Commissions, for the sole purpose of implementing, constructing, servicing and maintaining approved coastal zone management and/or restoration projects. Utilization of any and all rights derived under this lease by the mineral lessee, its agents, successors or assigns, shall not interfere with nor hinder the reasonable surface use by the Department

of Conservation and Energy, its Offices or Commissions, as herein above reserved.

Applicant: HAROLD J. ANDERSON, INC.

Bidder	Cash Payment	Price/Acre	Rental	Oil	Gas	Other

Legend

- 26060028
- Wildlife
- Counties

P.O.B.

HOOPOLE BAYOU

T12S - R10E

IBERIA

T13S - R10E

ST MARTIN

GRAND LAKE

Attakapas Island WMA

