

TRACT 46063 - Iberia and St. Martin Parishes, Louisiana

All of the lands now or formerly constituting the beds and bottoms of all water bodies of every nature and description as to which title is vested in the State of Louisiana, together with all islands arising therein and other lands formed by accretion or by reliction, where allowed by law, excepting tax adjudicated lands, and not presently under mineral lease on June 10, 2026, situated in Iberia and St. Martin Parishes, Louisiana, and more particularly described as follows: Beginning at a point having Coordinates of X = 2,001,514.52 and Y = 477,311.40; thence South 5,619.30 feet to a point on the boundary of Operating Agreement A0406 having a Coordinate of X = 2,001,514.52; thence on the boundary of said Operating Agreement A0406 the following courses: South 89 degrees 13 minutes 09 seconds West 4,164.64 feet, South 00 degrees 26 minutes 58 seconds East 2,670.43 feet, South 00 degrees 26 minutes 58 seconds East 5,340.96 feet and South 00 degrees 26 minutes 16 seconds East 4,792.94 feet to a point having a Coordinate of Y = 458,831.40; thence West 14,415.21 feet to a point having Coordinates of X = 1,983,034.52 and Y = 458,831.40; thence North 18,480.00 feet to a point having Coordinates of X = 1,983,034.52 and Y = 477,311.40; thence East 18,480.00 feet to the point of beginning, **LESS AND EXCEPT** any right, title, and interest in lands owned by and not under lease from the State of Louisiana, on behalf of the Iberia and St. Martin Parish School Boards, situated in Section 16, Township 13 South, Range 11 East, Iberia and St. Martin Parishes, Louisiana, contained within the above described tract, containing approximately **110 acres**, all as more particularly outlined on a plat on file in the Office of State Resources, Department of Conservation and Energy. All bearings, distances and coordinates are based on Louisiana Coordinate System of 1927, (North or South Zone), where applicable.

NOTE: The above description of the Tract nominated for lease has been provided and corrected, where required, exclusively by the nomination party. Any mineral lease selected from this Tract and awarded by the Louisiana State Mineral and Energy Board shall be without warranty of any kind, either express, implied, or statutory, including, but not limited to, the implied warranties of merchantability and fitness for a particular purpose. Should the mineral lease awarded by the Louisiana State Mineral and Energy Board be subsequently modified, cancelled or abrogated due to the existence of conflicting leases, operating agreements, private claims or other future obligations or conditions which may affect all or any portion of the leased Tract, it shall not relieve the Lessee of the obligation to pay any bonus due thereon to the Louisiana State Mineral and Energy Board, nor shall the Louisiana State Mineral and Energy Board be obligated to refund any consideration paid by the Lessor prior to such modification, cancellation, or abrogation, including, but not limited to, bonuses, rentals and royalties.

NOTE: This acreage is entirely within the boundary of the Atchafalaya Basin Legal Area.

NOTE: The State of Louisiana does hereby reserve, and this lease shall be subject to, the imprescriptible right of surface use in the nature of a

servitude in favor of the Department of Conservation and Energy, including its Offices and Commissions, for the sole purpose of implementing, constructing, servicing and maintaining approved coastal zone management and/or restoration projects. Utilization of any and all rights derived under this lease by the mineral lessee, its agents, successors or assigns, shall not interfere with nor hinder the reasonable surface use by the Department of Conservation and Energy, its Offices or Commissions, as herein above reserved.

Applicant: HAROLD J. ANDERSON, INC.

Bidder	Cash Payment	Price/Acre	Rental	Oil	Gas	Other

Legend

26060013

Active_Leases

Counties



0 2,000 4,000 8,000 Feet

IBERIA

BIG BAYOU
PIGEON

T12S - R10E

T13S -
R10E

P.O.B.

BAYOU MALLET

A0406

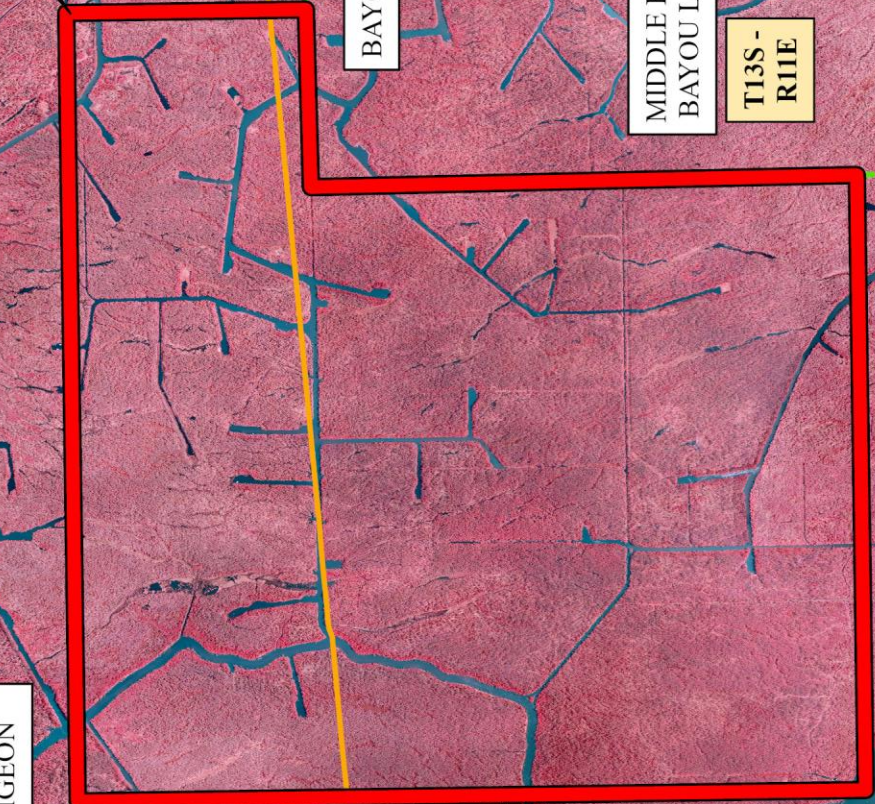
MIDDLE FORK
BAYOU LONG

T13S -
R11E

WEST FORK
BAYOU LONG

ST MARTIN

GRAND LAKE



TRACT 46064 - Iberia and St. Martin Parishes, Louisiana

All of the lands now or formerly constituting the beds and bottoms of all water bodies of every nature and description as to which title is vested in the State of Louisiana, together with all islands arising therein and other lands formed by accretion or by reliction, where allowed by law, excepting tax adjudicated lands, and not presently under mineral lease on June 10, 2026, situated in Iberia and St. Martin Parishes, Louisiana, and more particularly described as follows: Beginning at a point having Coordinates of X = 2,019,994.52 and Y = 477,311.40; thence South 5,435.48 feet to a point on the boundary of Operating Agreement A0406 having a Coordinate of X = 2,019,994.52; thence along the boundary of said Operating Agreement A0406 the following courses: South 88 degrees 41 minutes 03 seconds West 1,287.21 feet, South 89 degrees 32 minutes 27 seconds West 5,310.54 feet, South 89 degrees 30 minutes 10 seconds West 5,323.07 feet, South 89 degrees 28 minutes 19 seconds West 5,414.23 feet and South 89 degrees 13 minutes 09 seconds West 1,146.00 feet to a point having a Coordinate of X = 2,001,514.52; thence North 5,619.30 feet to a point having Coordinates of X = 2,001,514.52 and Y = 477,311.40; thence East 18,480.00 feet to the point of beginning, containing approximately **185 acres**, all as more particularly outlined on a plat on file in the Office of State Resources, Department of Conservation and Energy. All bearings, distances and coordinates are based on Louisiana Coordinate System of 1927, (North or South Zone), where applicable.

NOTE: The above description of the Tract nominated for lease has been provided and corrected, where required, exclusively by the nomination party. Any mineral lease selected from this Tract and awarded by the Louisiana State Mineral and Energy Board shall be without warranty of any kind, either express, implied, or statutory, including, but not limited to, the implied warranties of merchantability and fitness for a particular purpose. Should the mineral lease awarded by the Louisiana State Mineral and Energy Board be subsequently modified, cancelled or abrogated due to the existence of conflicting leases, operating agreements, private claims or other future obligations or conditions which may affect all or any portion of the leased Tract, it shall not relieve the Lessee of the obligation to pay any bonus due thereon to the Louisiana State Mineral and Energy Board, nor shall the Louisiana State Mineral and Energy Board be obligated to refund any consideration paid by the Lessor prior to such modification, cancellation, or abrogation, including, but not limited to, bonuses, rentals and royalties.

NOTE: This acreage is entirely within the boundary of the Atchafalaya Basin Legal Area.

NOTE: The State of Louisiana does hereby reserve, and this lease shall be subject to, the imprescriptible right of surface use in the nature of a servitude in favor of the Department of Conservation and Energy, including its Offices and Commissions, for the sole purpose of implementing, constructing, servicing and maintaining approved coastal zone management and/or restoration projects. Utilization of any and all rights derived under this lease by the mineral lessee, its agents, successors or assigns, shall

not interfere with nor hinder the reasonable surface use by the Department of Conservation and Energy, its Offices or Commissions, as herein above reserved.

Applicant: HAROLD J. ANDERSON, INC.

Bidder	Cash Payment	Price/Acre	Rental	Oil	Gas	Other

Legend

26060014



Active_Leases

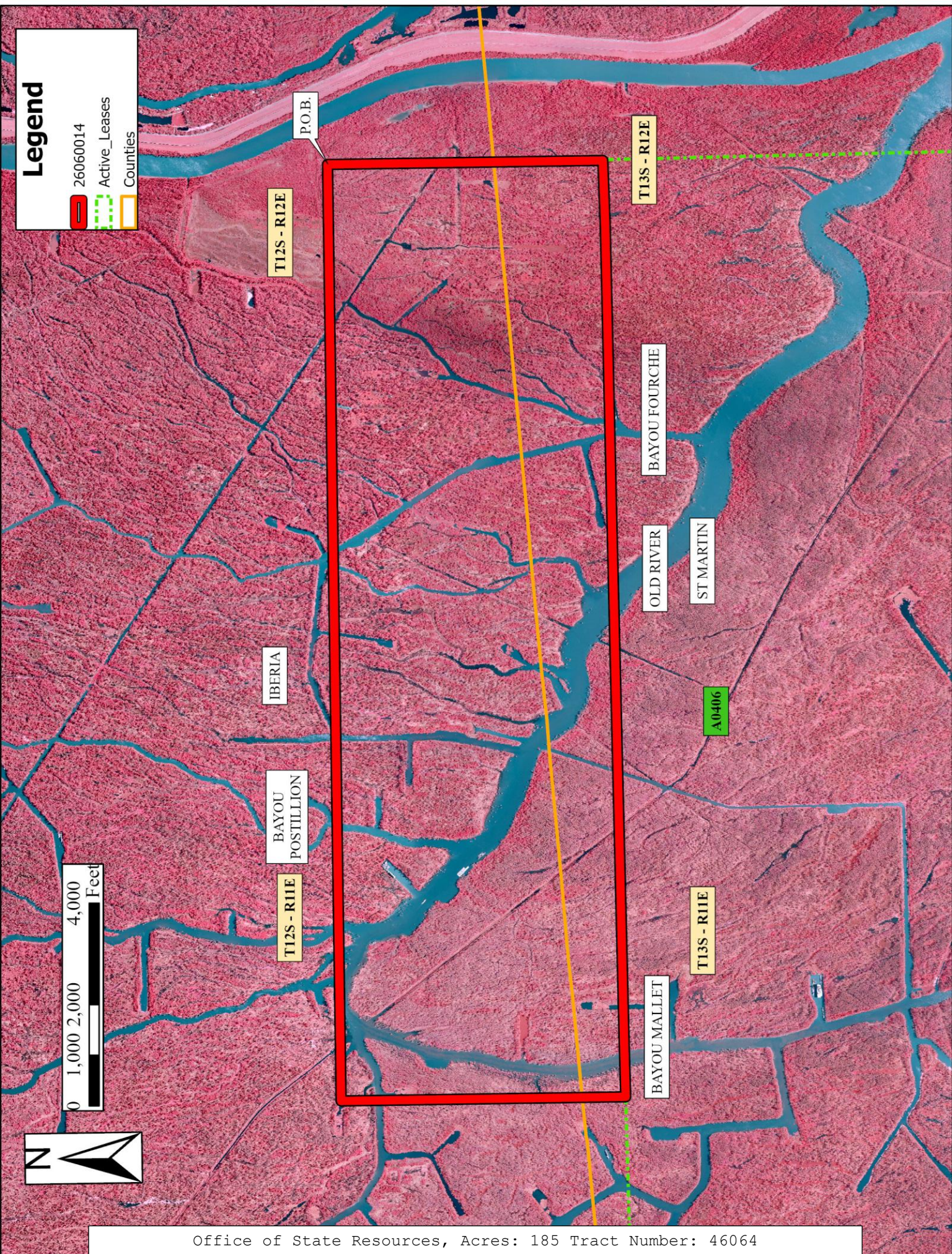


Counties



0 1,000 2,000 4,000 Feet

Office of State Resources, Acres: 185 Tract Number: 46064



TRACT 46065 - Assumption Iberia and St. Martin Parishes, Louisiana

All of the lands now or formerly constituting the beds and bottoms of all water bodies of every nature and description as to which title is vested in the State of Louisiana, together with all islands arising therein and other lands formed by accretion or by reliction, where allowed by law, excepting tax adjudicated lands, and not presently under mineral lease on June 10, 2026, situated in Assumption Iberia and St. Martin Parishes, Louisiana, and more particularly described as follows: Beginning at a point having Coordinates of X = 2,038,474.52 and Y = 477,311.40; thence South 18,480.00 feet to a point having Coordinates of X = 2,038,474.52 and Y = 458,831.40; thence West 18,346.93 feet to a point on the boundary of Operating Agreement A0406 having a Coordinate of Y = 458,831.40; thence along the boundary of said Operating Agreement A0406 the following courses: North 00 degrees 31 minutes 15 seconds West 13,045.39 feet and South 88 degrees 41 minutes 03 seconds West 14.46 feet to a point having a Coordinate of X = 2,019,994.52; thence North 5,435.48 feet to a point having Coordinates of X = 2,019,994.52 and Y = 477,311.40; thence East 18,480.00 feet to the point of beginning, **LESS AND EXCEPT** that portion, if any, of the above described tract that may lie within of the boundary of the Atchafalaya Basin, and **LESS AND EXCEPT** any right, title, and interest in lands owned by and not under lease from the State of Louisiana, on behalf of the Assumption, Iberia, and St. Martin Parish School Boards, situated in Section 16, Township 13 South, Range 12 East, Assumption, Iberia, and St. Martin Parishes, Louisiana, contained within the above described tract, containing approximately **277 acres**, all as more particularly outlined on a plat on file in the Office of State Resources, Department of Conservation and Energy. All bearings, distances and coordinates are based on Louisiana Coordinate System of 1927, (North or South Zone), where applicable.

NOTE: The above description of the Tract nominated for lease has been provided and corrected, where required, exclusively by the nomination party. Any mineral lease selected from this Tract and awarded by the Louisiana State Mineral and Energy Board shall be without warranty of any kind, either express, implied, or statutory, including, but not limited to, the implied warranties of merchantability and fitness for a particular purpose. Should the mineral lease awarded by the Louisiana State Mineral and Energy Board be subsequently modified, cancelled or abrogated due to the existence of conflicting leases, operating agreements, private claims or other future obligations or conditions which may affect all or any portion of the leased Tract, it shall not relieve the Lessee of the obligation to pay any bonus due thereon to the Louisiana State Mineral and Energy Board, nor shall the Louisiana State Mineral and Energy Board be obligated to refund any consideration paid by the Lessor prior to such modification, cancellation, or abrogation, including, but not limited to, bonuses, rentals and royalties.

NOTE: The State of Louisiana does hereby reserve, and this lease shall be subject to, the imprescriptible right of surface use in the nature of a servitude in favor of the Department of Conservation and Energy, including its Offices and Commissions, for the sole purpose of implementing,

constructing, servicing and maintaining approved coastal zone management and/or restoration projects. Utilization of any and all rights derived under this lease by the mineral lessee, its agents, successors or assigns, shall not interfere with nor hinder the reasonable surface use by the Department of Conservation and Energy, its Offices or Commissions, as herein above reserved.

Applicant: HAROLD J. ANDERSON, INC.

Bidder	Cash Payment	Price/Acre	Rental	Oil	Gas	Other

TRACT 46066 - Assumption Iberia and St. Martin Parishes, Louisiana

All of the lands now or formerly constituting the beds and bottoms of all water bodies of every nature and description as to which title is vested in the State of Louisiana, together with all islands arising therein and other lands formed by accretion or by reliction, where allowed by law, excepting tax adjudicated lands, and not presently under mineral lease on June 10, 2026, situated in Assumption Iberia and St. Martin Parishes, Louisiana, and more particularly described as follows: Beginning at a point having Coordinates of X = 2,038,474.52 and Y = 477,311.40; thence South 18,480.00 feet to a point having Coordinates of X = 2,038,474.52 and Y = 458,831.40; thence West 18,346.93 feet to a point on the boundary of Operating Agreement A0406 having a Coordinate of Y = 458,831.40; thence along the boundary of said Operating Agreement A0406 the following courses: North 00 degrees 31 minutes 15 seconds West 13,045.39 feet and South 88 degrees 41 minutes 03 seconds West 14.46 feet to a point having a Coordinate of X = 2,019,994.52; thence North 5,435.48 feet to a point having Coordinates of X = 2,019,994.52 and Y = 477,311.40; thence East 18,480.00 feet to the point of beginning, **LESS AND EXCEPT** that portion, if any, of the above described tract that may lie outside of the boundary of the Atchafalaya Basin, and **LESS AND EXCEPT** any right, title, and interest in lands owned by and not under lease from the State of Louisiana, on behalf of the Assumption, Iberia, and St. Martin Parish School Boards, situated in Section 16, Township 13 South, Range 12 East, Assumption, Iberia, and St. Martin Parishes, Louisiana, contained within the above described tract, (This lease includes only waterbottoms claimed and owned by the state and specifically excludes any land which the state may claim or own and to which the mineral rights are vested in the state), containing approximately **87 acres**, all as more particularly outlined on a plat on file in the Office of State Resources, Department of Conservation and Energy. All bearings, distances and coordinates are based on Louisiana Coordinate System of 1927, (North or South Zone), where applicable.

NOTE: The above description of the Tract nominated for lease has been provided and corrected, where required, exclusively by the nomination party. Any mineral lease selected from this Tract and awarded by the Louisiana State Mineral and Energy Board shall be without warranty of any kind, either express, implied, or statutory, including, but not limited to, the implied warranties of merchantability and fitness for a particular purpose. Should the mineral lease awarded by the Louisiana State Mineral and Energy Board be subsequently modified, cancelled or abrogated due to the existence of conflicting leases, operating agreements, private claims or other future obligations or conditions which may affect all or any portion of the leased Tract, it shall not relieve the Lessee of the obligation to pay any bonus due thereon to the Louisiana State Mineral and Energy Board, nor shall the Louisiana State Mineral and Energy Board be obligated to refund any consideration paid by the Lessor prior to such modification, cancellation, or abrogation, including, but not limited to, bonuses, rentals and royalties.

NOTE: This acreage is entirely within the boundary of the Atchafalaya Basin Legal Area.

NOTE: The State of Louisiana does hereby reserve, and this lease shall be subject to, the imprescriptible right of surface use in the nature of a servitude in favor of the Department of Conservation and Energy, including its Offices and Commissions, for the sole purpose of implementing, constructing, servicing and maintaining approved coastal zone management and/or restoration projects. Utilization of any and all rights derived under this lease by the mineral lessee, its agents, successors or assigns, shall not interfere with nor hinder the reasonable surface use by the Department of Conservation and Energy, its Offices or Commissions, as herein above reserved.

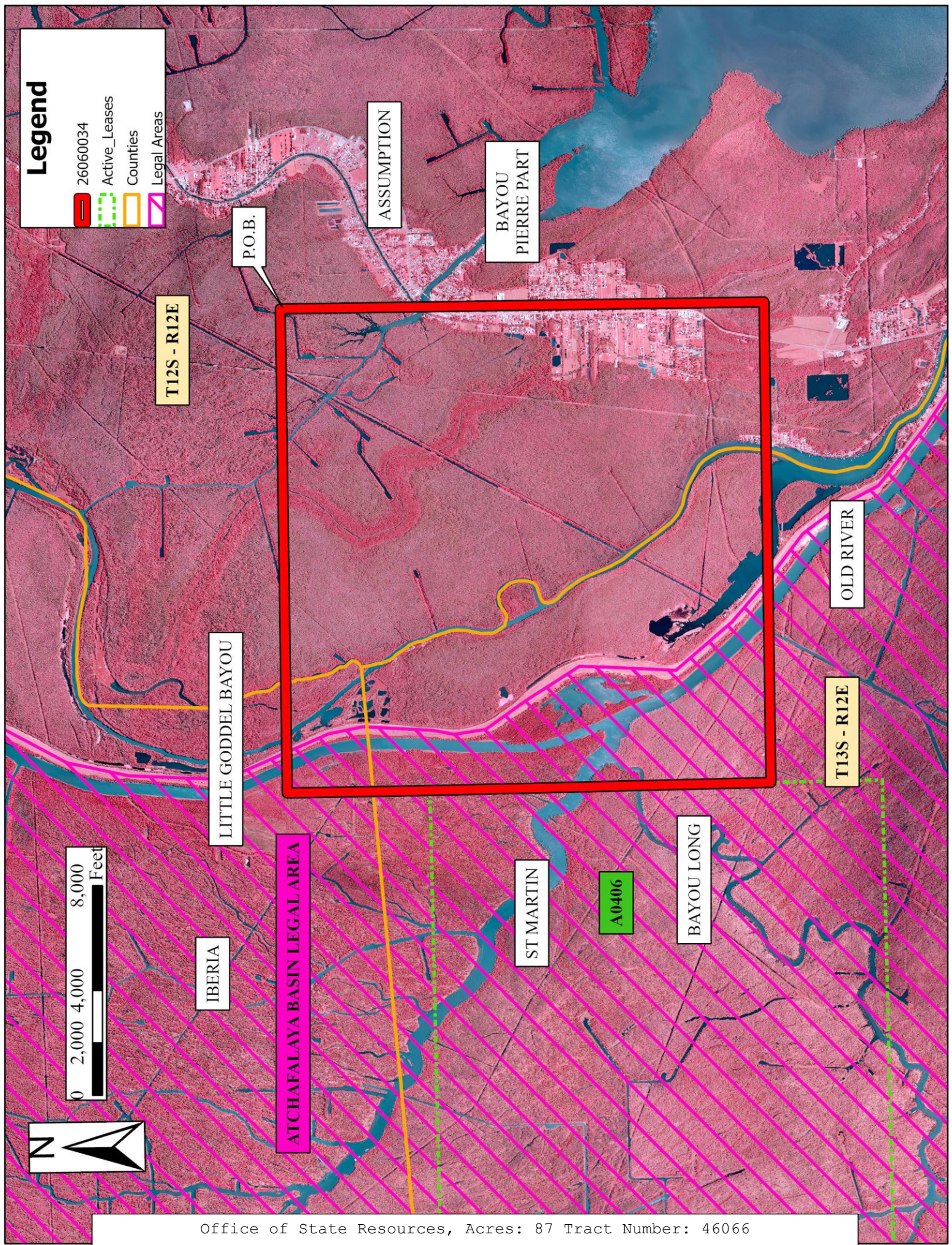
Applicant: HAROLD J. ANDERSON, INC.

Bidder	Cash Payment	Price/Acre	Rental	Oil	Gas	Other

Legend

26060034

- Active_Leases
- Counties
- Legal Areas



TRACT 46067 - Assumption Parish, Louisiana

All of the lands now or formerly constituting the beds and bottoms of all water bodies of every nature and description as to which title is vested in the State of Louisiana, together with all islands arising therein and other lands formed by accretion or by reliction, where allowed by law, excepting tax adjudicated lands, and not presently under mineral lease on June 10, 2026, situated in Assumption Parish, Louisiana, and more particularly described as follows: Beginning at a point having Coordinates of X = 2,056,954.52 and Y = 477,311.40; thence South 18,480.00 feet to a point having Coordinates of X = 2,056,954.52 and Y = 458,831.40; thence West 18,480.00 feet to a point having Coordinates of X = 2,038,474.52 and Y = 458,831.40; thence North 18,480.00 feet to a point having Coordinates of X = 2,038,474.52 and Y = 477,311.40; thence East 18,480.00 feet to the point of beginning, containing approximately **1,691 acres**, all as more particularly outlined on a plat on file in the Office of State Resources, Department of Conservation and Energy. All bearings, distances and coordinates are based on Louisiana Coordinate System of 1927, (North or South Zone), where applicable.

NOTE: The above description of the Tract nominated for lease has been provided and corrected, where required, exclusively by the nomination party. Any mineral lease selected from this Tract and awarded by the Louisiana State Mineral and Energy Board shall be without warranty of any kind, either express, implied, or statutory, including, but not limited to, the implied warranties of merchantability and fitness for a particular purpose. Should the mineral lease awarded by the Louisiana State Mineral and Energy Board be subsequently modified, cancelled or abrogated due to the existence of conflicting leases, operating agreements, private claims or other future obligations or conditions which may affect all or any portion of the leased Tract, it shall not relieve the Lessee of the obligation to pay any bonus due thereon to the Louisiana State Mineral and Energy Board, nor shall the Louisiana State Mineral and Energy Board be obligated to refund any consideration paid by the Lessor prior to such modification, cancellation, or abrogation, including, but not limited to, bonuses, rentals and royalties.

NOTE: The State of Louisiana does hereby reserve, and this lease shall be subject to, the imprescriptible right of surface use in the nature of a servitude in favor of the Department of Conservation and Energy, including its Offices and Commissions, for the sole purpose of implementing, constructing, servicing and maintaining approved coastal zone management and/or restoration projects. Utilization of any and all rights derived under this lease by the mineral lessee, its agents, successors or assigns, shall not interfere with nor hinder the reasonable surface use by the Department of Conservation and Energy, its Offices or Commissions, as herein above reserved.

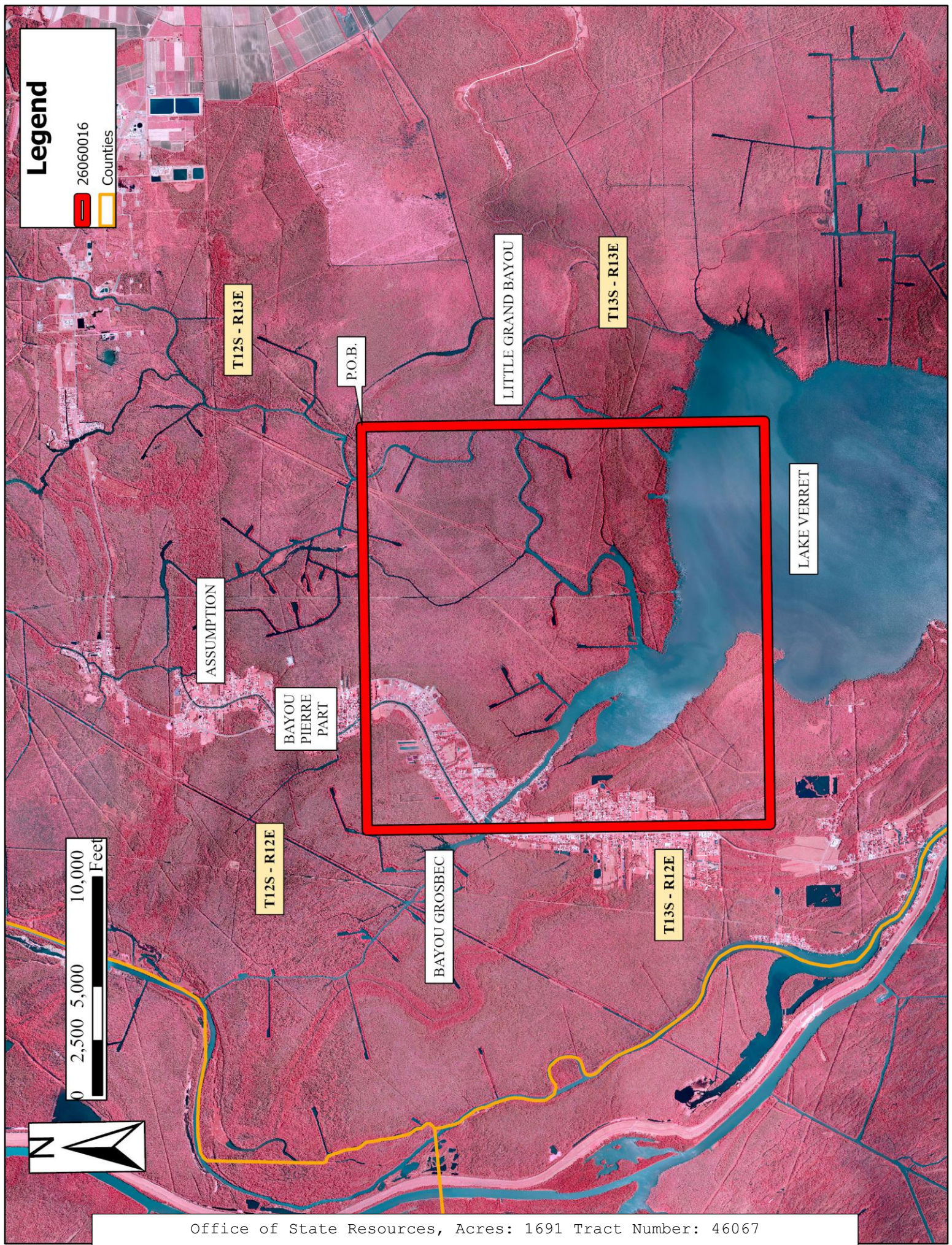
Applicant: HAROLD J. ANDERSON, INC.

Bidder	Cash Payment	Price/ Acre	Rental	Oil	Gas	Other

Legend

26060016

Counties



T12S - R13E

P.O.B.

LITTLE GRAND BAYOU

T13S - R13E

ASSUMPTION

BAYOU
PIERRE
PART

LAKE
VERRET

T12S - R12E

BAYOU
GROSBEC

T13S - R12E



TRACT 46068 - St. Martin Parish, Louisiana

All of the lands now or formerly constituting the beds and bottoms of all water bodies of every nature and description as to which title is vested in the State of Louisiana, together with all islands arising therein and other lands formed by accretion or by reliction, where allowed by law, excepting tax adjudicated lands, and not presently under mineral lease on June 10, 2026, situated in St. Martin Parish, Louisiana, and more particularly described as follows: Beginning at a point having Coordinates of X = 1,968,763.81 and Y = 468,071.40; thence East 14,270.71 feet to a point having Coordinates of X = 1,983,034.52 and Y = 468,071.40, thence South 9,240.00 feet to a point having Coordinates of X = 1,983,034.52 and Y = 458,831.40, thence West 14,270.71 feet to a point having Coordinates of X = 1,968,763.81 and Y = 458,831.40, thence North 9,240.00 feet to the point of beginning, (This tract includes only waterbottoms claimed and owned by the state and specifically excludes any portion of the above described tract that lies inside of the Attakapas Island Wildlife Management Area), containing approximately **869 acres**, all as more particularly outlined on a plat on file in the Office of State Resources, Department of Conservation and Energy. All bearings, distances and coordinates are based on Louisiana Coordinate System of 1927, (North or South Zone), where applicable.

NOTE: The above description of the Tract nominated for lease has been provided and corrected, where required, exclusively by the nomination party. Any mineral lease selected from this Tract and awarded by the Louisiana State Mineral and Energy Board shall be without warranty of any kind, either express, implied, or statutory, including, but not limited to, the implied warranties of merchantability and fitness for a particular purpose. Should the mineral lease awarded by the Louisiana State Mineral and Energy Board be subsequently modified, cancelled or abrogated due to the existence of conflicting leases, operating agreements, private claims or other future obligations or conditions which may affect all or any portion of the leased Tract, it shall not relieve the Lessee of the obligation to pay any bonus due thereon to the Louisiana State Mineral and Energy Board, nor shall the Louisiana State Mineral and Energy Board be obligated to refund any consideration paid by the Lessor prior to such modification, cancellation, or abrogation, including, but not limited to, bonuses, rentals and royalties.

NOTE: This acreage is entirely within the boundary of the Atchafalaya Basin Legal Area.

NOTE: The State of Louisiana does hereby reserve, and this lease shall be subject to, the imprescriptible right of surface use in the nature of a servitude in favor of the Department of Conservation and Energy, including its Offices and Commissions, for the sole purpose of implementing, constructing, servicing and maintaining approved coastal zone management and/or restoration projects. Utilization of any and all rights derived under this lease by the mineral lessee, its agents, successors or assigns, shall not interfere with nor hinder the reasonable surface use by the Department

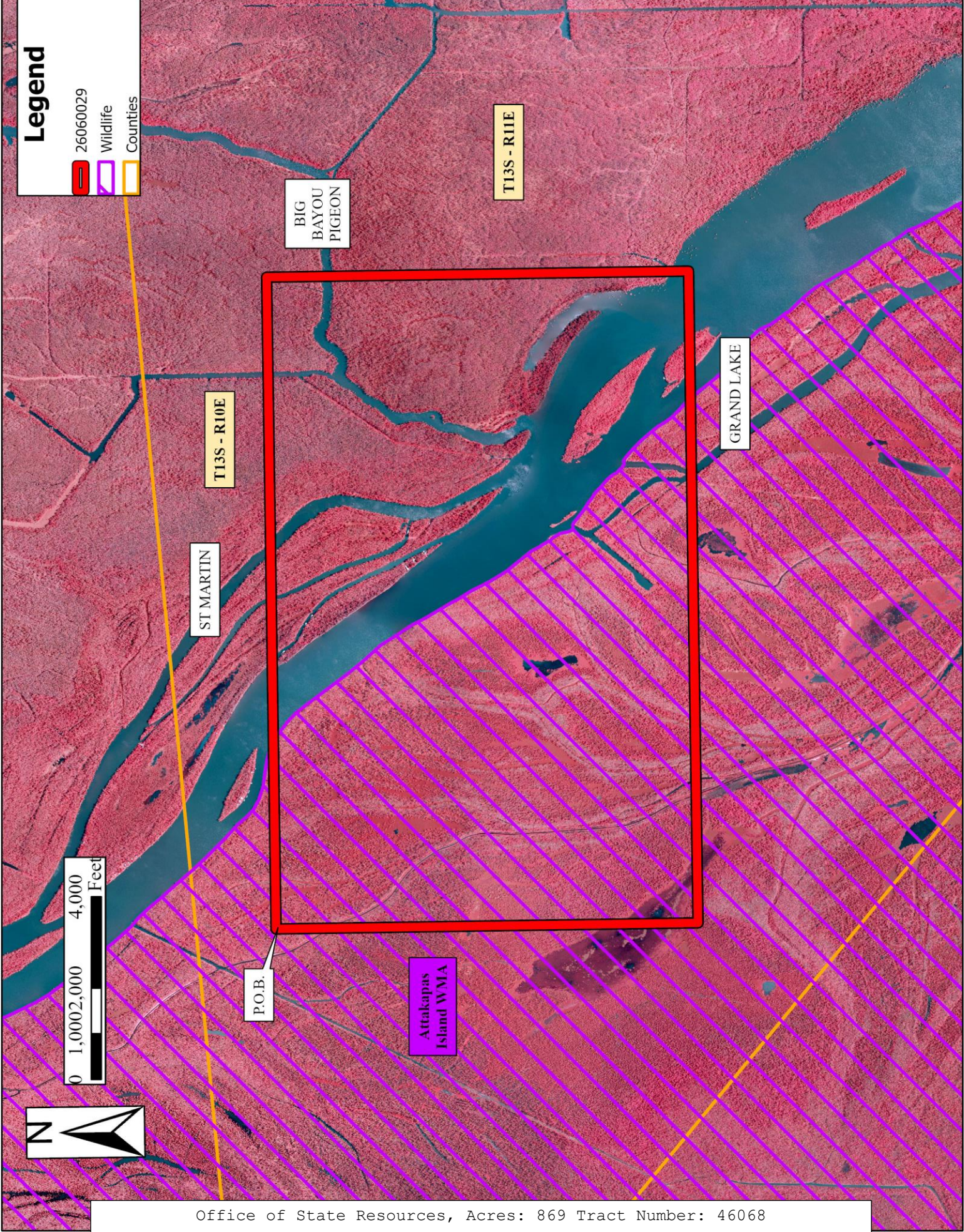
of Conservation and Energy, its Offices or Commissions, as herein above reserved.

Applicant: HAROLD J. ANDERSON, INC.

Bidder	Cash Payment	Price/Acre	Rental	Oil	Gas	Other

Legend

- 26060029
- Wildlife
- Counties



TRACT 46069 - St. Martin and St. Mary Parishes, Louisiana

All of the lands now or formerly constituting the beds and bottoms of all water bodies of every nature and description as to which title is vested in the State of Louisiana, together with all islands arising therein and other lands formed by accretion or by reliction, where allowed by law, excepting tax adjudicated lands, and not presently under mineral lease on June 10, 2026, situated in St. Martin and St. Mary Parishes, Louisiana, and more particularly described as follows: Beginning at a point having Coordinates of X = 1,971,248.81 and Y = 458,831.40; thence East 11,785.71 feet to a point having Coordinates of X = 1,983,034.52 and Y = 458,831.40; thence South 9,240.00 feet to a point having Coordinates of X = 1,983,034.52 and Y = 449,591.40; thence West 11,785.71 feet to a point having Coordinates of X = 1,971,248.81 and Y = 449,591.40; thence North 9,240.00 feet to the point of beginning, (This tract includes only waterbottoms claimed and owned by the state and specifically excludes any portion of the above described tract that lies inside of the Attakapas Island Wildlife Management Area), containing approximately **102 acres**, all as more particularly outlined on a plat on file in the Office of State Resources, Department of Conservation and Energy. All bearings, distances and coordinates are based on Louisiana Coordinate System of 1927, (North or South Zone), where applicable.

NOTE: The above description of the Tract nominated for lease has been provided and corrected, where required, exclusively by the nomination party. Any mineral lease selected from this Tract and awarded by the Louisiana State Mineral and Energy Board shall be without warranty of any kind, either express, implied, or statutory, including, but not limited to, the implied warranties of merchantability and fitness for a particular purpose. Should the mineral lease awarded by the Louisiana State Mineral and Energy Board be subsequently modified, cancelled or abrogated due to the existence of conflicting leases, operating agreements, private claims or other future obligations or conditions which may affect all or any portion of the leased Tract, it shall not relieve the Lessee of the obligation to pay any bonus due thereon to the Louisiana State Mineral and Energy Board, nor shall the Louisiana State Mineral and Energy Board be obligated to refund any consideration paid by the Lessor prior to such modification, cancellation, or abrogation, including, but not limited to, bonuses, rentals and royalties.

NOTE: This acreage is entirely within the boundary of the Atchafalaya Basin Legal Area.

NOTE: The State of Louisiana does hereby reserve, and this lease shall be subject to, the imprescriptible right of surface use in the nature of a servitude in favor of the Department of Conservation and Energy, including its Offices and Commissions, for the sole purpose of implementing, constructing, servicing and maintaining approved coastal zone management and/or restoration projects. Utilization of any and all rights derived under this lease by the mineral lessee, its agents, successors or assigns, shall not interfere with nor hinder the reasonable surface use by the Department

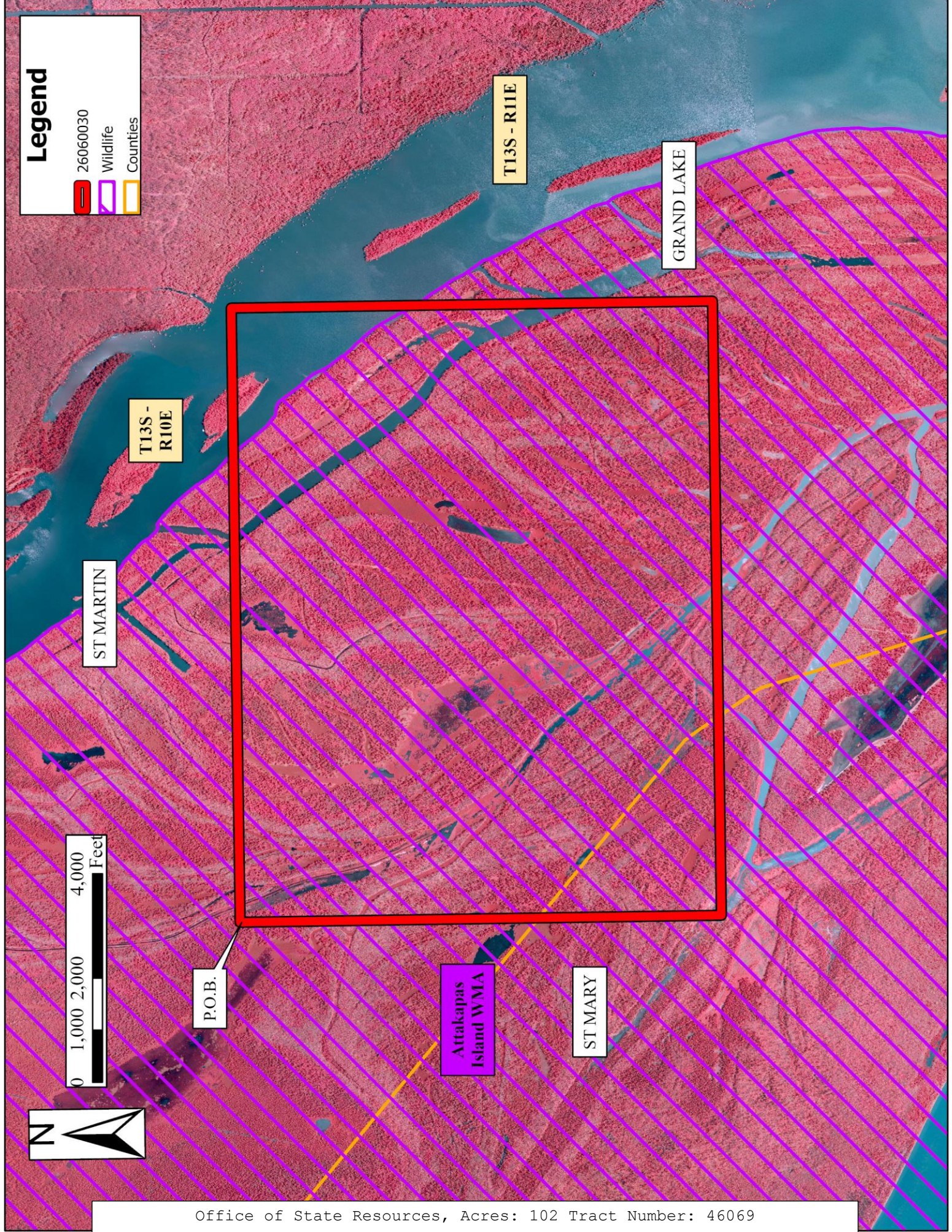
of Conservation and Energy, its Offices or Commissions, as herein above reserved.

Applicant: HAROLD J. ANDERSON, INC.

Bidder	Cash Payment	Price/Acre	Rental	Oil	Gas	Other

Legend

- 26060030
- Wildlife
- Counties



TRACT 46070 - St. Martin Parish, Louisiana

All of the lands now or formerly constituting the beds and bottoms of all water bodies of every nature and description as to which title is vested in the State of Louisiana, together with all islands arising therein and other lands formed by accretion or by reliction, where allowed by law, excepting tax adjudicated lands, and not presently under mineral lease on June 10, 2026, situated in St. Martin Parish, Louisiana, and more particularly described as follows: Beginning at a point having Coordinates of X = 2,001,514.52 and Y = 440,351.40; thence West 18,480.00 feet to a point having Coordinates of X = 1,983,034.52 and Y = 440,351.40; thence North 18,480.00 feet to a point having Coordinates of X = 1,983,034.52 and Y = 458,831.40; thence East 14,415.21 feet to a point on the boundary of Operating Agreement A0406 having a Coordinate of Y = 458,831.40; thence along the boundary of said Operating Agreement A0406 the following courses: South 00 degrees 26 minutes 16 seconds East 548.02 feet, South 00 degrees 46 minutes 43 seconds East 3,947.70 feet and North 89 degrees 09 minutes 47 seconds East 4,007.39 feet to a point having a Coordinate of X = 2,001,514.52; thence South 14,043.19 feet to the point of beginning, (This tract includes only waterbottoms claimed and owned by the state and specifically excludes any portion of the above described tract that lies inside of the Attakapas Island Wildlife Management Area), containing approximately **1,067 acres**, all as more particularly outlined on a plat on file in the Office of State Resources, Department of Conservation and Energy. All bearings, distances and coordinates are based on Louisiana Coordinate System of 1927, (North or South Zone), where applicable.

NOTE: The above description of the Tract nominated for lease has been provided and corrected, where required, exclusively by the nomination party. Any mineral lease selected from this Tract and awarded by the Louisiana State Mineral and Energy Board shall be without warranty of any kind, either express, implied, or statutory, including, but not limited to, the implied warranties of merchantability and fitness for a particular purpose. Should the mineral lease awarded by the Louisiana State Mineral and Energy Board be subsequently modified, cancelled or abrogated due to the existence of conflicting leases, operating agreements, private claims or other future obligations or conditions which may affect all or any portion of the leased Tract, it shall not relieve the Lessee of the obligation to pay any bonus due thereon to the Louisiana State Mineral and Energy Board, nor shall the Louisiana State Mineral and Energy Board be obligated to refund any consideration paid by the Lessor prior to such modification, cancellation, or abrogation, including, but not limited to, bonuses, rentals and royalties.

NOTE: This acreage is entirely within the boundary of the Atchafalaya Basin Legal Area.

NOTE: The State of Louisiana does hereby reserve, and this lease shall be subject to, the imprescriptible right of surface use in the nature of a servitude in favor of the Department of Conservation and Energy, including its Offices and Commissions, for the sole purpose of implementing,

constructing, servicing and maintaining approved coastal zone management and/or restoration projects. Utilization of any and all rights derived under this lease by the mineral lessee, its agents, successors or assigns, shall not interfere with nor hinder the reasonable surface use by the Department of Conservation and Energy, its Offices or Commissions, as herein above reserved.

Applicant: HAROLD J. ANDERSON, INC.

Bidder	Cash Payment	Price/Acre	Rental	Oil	Gas	Other

Legend

26060031

Wildlife

Active_Leases

Counties

0 2,500 5,000 10,000 Feet



A0406

T13S - R11E

WEST FORK BAYOU LONG

P.O.B.

LITTLE BAYOU LONG

T14S - R11E

WILDCAT BAYOU

ST MARTIN

Atrakapas Island WMA

GRAND LAKE

TRACT 46071 - Assumption and St. Martin Parishes, Louisiana

All of the lands now or formerly constituting the beds and bottoms of all water bodies of every nature and description as to which title is vested in the State of Louisiana, together with all islands arising therein and other lands formed by accretion or by reliction, where allowed by law, excepting tax adjudicated lands, and not presently under mineral lease on June 10, 2026, situated in Assumption and St. Martin Parishes, Louisiana, and more particularly described as follows: Beginning at a point having Coordinates of X = 2,038,474.52 and Y = 458,831.40; thence South 18,480.00 feet to a point having Coordinates of X = 2,038,474.52 and Y = 440,351.40; thence West 18,480.00 feet to a point having Coordinates of X = 2,019,994.52 and Y = 440,351.40; thence North 14,224.22 feet to a point on the boundary of Operating Agreement A0406 having a Coordinate of X = 2,019,994.52; thence along the boundary of said Operating Agreement A0406 the following courses: North 89 degrees 33 minutes 16 seconds East 171.76 feet and North 00 degrees 31 minutes 15 seconds West 4,254.62 feet to a point having a Coordinate of Y = 458,831.40; thence East 18,346.93 feet to the point of beginning, **LESS AND EXCEPT** that portion, if any, of the above described tract that may lie within of the boundary of the Atchafalaya Basin, containing approximately **210 acres**, all as more particularly outlined on a plat on file in the Office of State Resources, Department of Conservation and Energy. All bearings, distances and coordinates are based on Louisiana Coordinate System of 1927, (North or South Zone), where applicable.

NOTE: The above description of the Tract nominated for lease has been provided and corrected, where required, exclusively by the nomination party. Any mineral lease selected from this Tract and awarded by the Louisiana State Mineral and Energy Board shall be without warranty of any kind, either express, implied, or statutory, including, but not limited to, the implied warranties of merchantability and fitness for a particular purpose. Should the mineral lease awarded by the Louisiana State Mineral and Energy Board be subsequently modified, cancelled or abrogated due to the existence of conflicting leases, operating agreements, private claims or other future obligations or conditions which may affect all or any portion of the leased Tract, it shall not relieve the Lessee of the obligation to pay any bonus due thereon to the Louisiana State Mineral and Energy Board, nor shall the Louisiana State Mineral and Energy Board be obligated to refund any consideration paid by the Lessor prior to such modification, cancellation, or abrogation, including, but not limited to, bonuses, rentals and royalties.

NOTE: The State of Louisiana does hereby reserve, and this lease shall be subject to, the imprescriptible right of surface use in the nature of a servitude in favor of the Department of Conservation and Energy, including its Offices and Commissions, for the sole purpose of implementing, constructing, servicing and maintaining approved coastal zone management and/or restoration projects. Utilization of any and all rights derived under this lease by the mineral lessee, its agents, successors or assigns, shall not interfere with nor hinder the reasonable surface use by the Department

of Conservation and Energy, its Offices or Commissions, as herein above reserved.

Applicant: HAROLD J. ANDERSON, INC.

Bidder	Cash Payment	Price/Acre	Rental	Oil	Gas	Other

Legend

26060023

Active_Leases

Counties

Legal Areas



P.O.B.

T13S - R12E

OLD RIVER

ASSUMPTION

T14S - R12E

GRAND RIVER

BIG FORK BAYOU

ST MARTIN

A0406



TRACT 46072 - Assumption and St. Martin Parishes, Louisiana

All of the lands now or formerly constituting the beds and bottoms of all water bodies of every nature and description as to which title is vested in the State of Louisiana, together with all islands arising therein and other lands formed by accretion or by reliction, where allowed by law, excepting tax adjudicated lands, and not presently under mineral lease on June 10, 2026, situated in Assumption and St. Martin Parishes, Louisiana, and more particularly described as follows: Beginning at a point having Coordinates of X = 2,038,474.52 and Y = 458,831.40; thence South 18,480.00 feet to a point having Coordinates of X = 2,038,474.52 and Y = 440,351.40; thence West 18,480.00 feet to a point having Coordinates of X = 2,019,994.52 and Y = 440,351.40; thence North 14,224.22 feet to a point on the boundary of Operating Agreement A0406 having a Coordinate of X = 2,019,994.52; thence along the boundary of said Operating Agreement A0406 the following courses: North 89 degrees 33 minutes 16 seconds East 171.76 feet and North 00 degrees 31 minutes 15 seconds West 4,254.62 feet to a point having a Coordinate of Y = 458,831.40; thence East 18,346.93 feet to the point of beginning, **LESS AND EXCEPT** that portion, if any, of the above described tract that may lie outside of the boundary of the Atchafalaya Basin, containing approximately **58 acres**, all as more particularly outlined on a plat on file in the Office of State Resources, Department of Conservation and Energy. All bearings, distances and coordinates are based on Louisiana Coordinate System of 1927, (North or South Zone), where applicable.

NOTE: The above description of the Tract nominated for lease has been provided and corrected, where required, exclusively by the nomination party. Any mineral lease selected from this Tract and awarded by the Louisiana State Mineral and Energy Board shall be without warranty of any kind, either express, implied, or statutory, including, but not limited to, the implied warranties of merchantability and fitness for a particular purpose. Should the mineral lease awarded by the Louisiana State Mineral and Energy Board be subsequently modified, cancelled or abrogated due to the existence of conflicting leases, operating agreements, private claims or other future obligations or conditions which may affect all or any portion of the leased Tract, it shall not relieve the Lessee of the obligation to pay any bonus due thereon to the Louisiana State Mineral and Energy Board, nor shall the Louisiana State Mineral and Energy Board be obligated to refund any consideration paid by the Lessor prior to such modification, cancellation, or abrogation, including, but not limited to, bonuses, rentals and royalties.

NOTE: This acreage is entirely within the boundary of the Atchafalaya Basin Legal Area.

NOTE: The State of Louisiana does hereby reserve, and this lease shall be subject to, the imprescriptible right of surface use in the nature of a servitude in favor of the Department of Conservation and Energy, including its Offices and Commissions, for the sole purpose of implementing, constructing, servicing and maintaining approved coastal zone management and/or restoration projects. Utilization of any and all rights derived under

this lease by the mineral lessee, its agents, successors or assigns, shall not interfere with nor hinder the reasonable surface use by the Department of Conservation and Energy, its Offices or Commissions, as herein above reserved.

Applicant: HAROLD J. ANDERSON, INC.

Bidder	Cash Payment	Price/Acre	Rental	Oil	Gas	Other

Legend

26060035

Active_Leases

Counties

Legal Areas



P.O.B.

T13S - R12E

BAYOU GODDEL

OLD RIVER

ASSUMPTION

T14S - R12E

GRAND RIVER

BIG FORK BAYOU



A0406

ST MARTIN

ATACHAFALAYA BASIN LEGAL AREA