

TRACT 46077 - Iberia Parish, Louisiana

All lands now or formerly constituting the beds and bottoms of water bodies of whatever description and nature owned by the State of Louisiana and located within the geographical boundaries of the Attakapas Island Wildlife Management Area and not presently under mineral lease by the State of Louisiana as of June 10, 2026, the area being set forth as follows: Beginning at a point having Coordinates of X = 1,983,034.52 and Y = 495,791.40; thence South 18,480.00 feet to a point having Coordinates of X = 1,983,034.52 and Y = 477,311.40; thence West 18,480.00 feet to a point having Coordinates of X = 1,964,554.52 and Y = 477,311.40; thence North 18,480.00 feet to a point having Coordinates of X = 1,964,554.52 and Y = 495,791.40; thence East 18,480.00 feet to the point of beginning, (This tract includes only the Attakapas Island Wildlife Management Area and excludes any portion of the above described tract that lies outside of the Attakapas Island Wildlife Management Area), containing approximately **111 acres**, all as more particularly outlined on a plat on file in the Office of State Resources, Department of Conservation and Energy. All bearings, distances and coordinates are based on Louisiana Coordinate System of 1927, (North or South Zone).

NOTE: The above description of the Tract nominated for lease has been provided and corrected, where required, exclusively by the nomination party. Any mineral lease selected from this Tract and awarded by the Louisiana State Mineral and Energy Board shall be without warranty of any kind, either express, implied, or statutory, including, but not limited to, the implied warranties of merchantability and fitness for a particular purpose. Should the mineral lease awarded by the Louisiana State Mineral and Energy Board be subsequently modified, cancelled or abrogated due to the existence of conflicting leases, operating agreements, private claims or other future obligations or conditions which may affect all or any portion of the leased Tract, it shall not relieve the Lessee of the obligation to pay any bonus due thereon to the Louisiana State Mineral and Energy Board, nor shall the Louisiana State Mineral and Energy Board be obligated to refund any consideration paid by the Lessor prior to such modification, cancellation, or abrogation, including, but not limited to, bonuses, rentals and royalties.

NOTE: This tract is located in the Attakapas Island Wildlife Management Area under the jurisdiction of the Louisiana Department of Wildlife and Fisheries which has promulgated rules and regulations for the protection of game and wildlife on the aforesaid Tract and, therefore, shall be subject to said rules and regulations, a copy of which may be obtained from the Department of Wildlife and Fisheries. In addition to the specific rules and regulations applicable, the following shall apply regarding operations under this mineral lease:

1. No activities will be allowed without written authorization from the Louisiana Department of Wildlife and Fisheries. All projects will be coordinated and approved by the appropriate WMA Manager prior to any activities on the wildlife management area.

2. Proposed projects will be evaluated on a case by case basis. Modifications to proposed project features, including, but not limited to, access routes, spoil placement, well sites, flowlines and appurtenant structures may be required by the Department of Wildlife and Fisheries.

3. Compensatory mitigation will be required to offset unavoidable wetland impacts.

4. Removal of all structures, facilities and equipment will be required within 120 days of abandonment unless otherwise agreed to in writing by the Department of Wildlife and Fisheries.

5. No activities will be allowed during the hunting season unless approved by the Department.

6. Compliance with the said WMA regulations will be required unless otherwise specified by the Department.

7. Prior to submitting applications for wetland permits to Federal and State permitting agencies the leaseholder shall coordinate project details with the Department of Wildlife and Fisheries. Contact person for the Department will be Mike Perot at (225) 765-3978.

8. Additionally, the Department will require a Minimum royalty for years 1-3 of 18.5% (rate will run for 3 years on 1st production). After 3 years of production, royalty will increase to 2% over the accepted bid rate. Production must begin within 24 months after execution of lease; otherwise royalty will increase to 4% over the accepted bid rate.

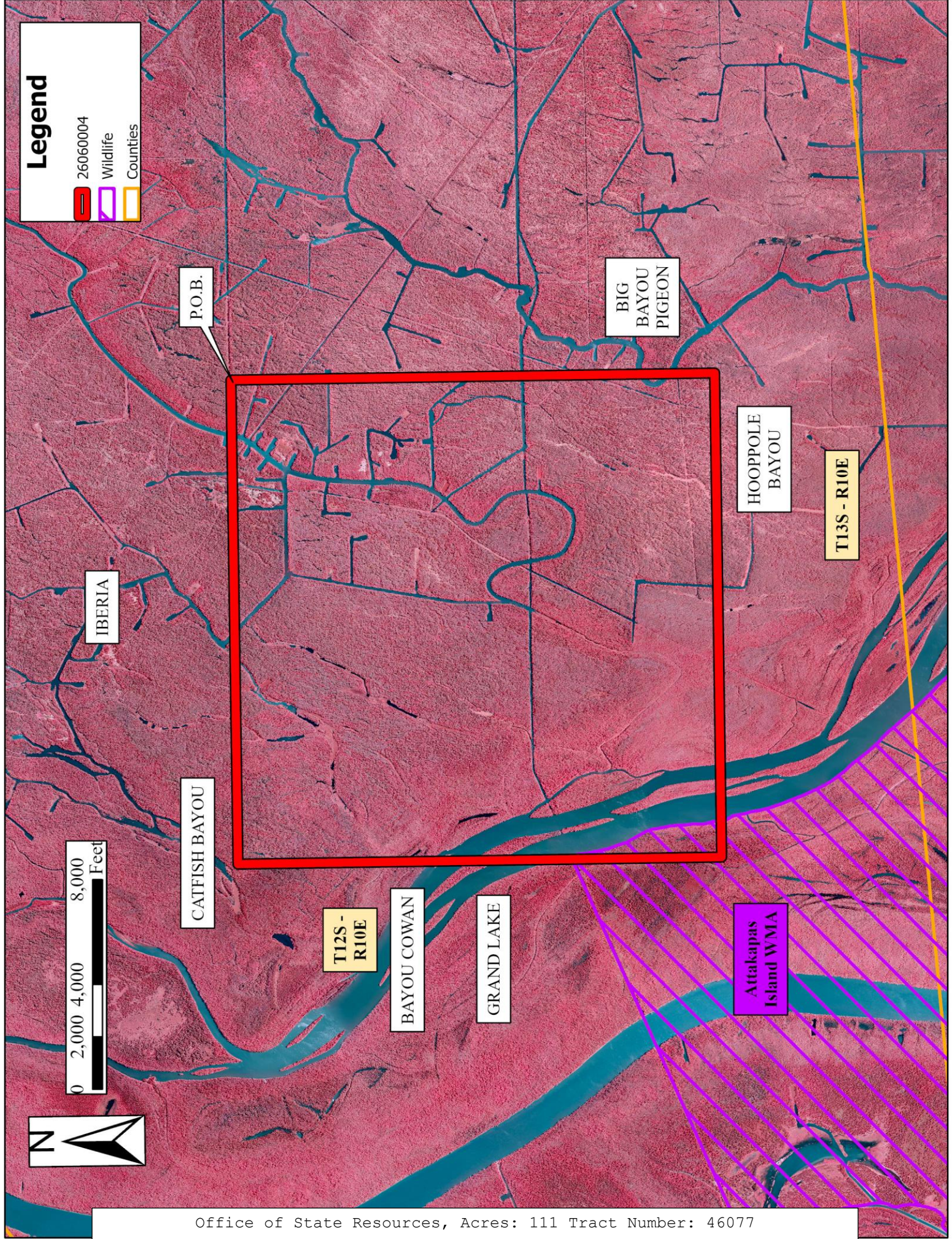
NOTE: The State of Louisiana does hereby reserve, and this lease shall be subject to, the imprescriptible right of surface use in the nature of a servitude in favor of the Department of Conservation and Energy, including its Offices and Commissions, for the sole purpose of implementing, constructing, servicing and maintaining approved coastal zone management and/or restoration projects. Utilization of any and all rights derived under this lease by the mineral lessee, its agents, successors or assigns, shall not interfere with nor hinder the reasonable surface use by the Department of Conservation and Energy, its Offices or Commissions, as herein above reserved.

Applicant: HAROLD J. ANDERSON, INC.

Bidder	Cash Payment	Price/ Acre	Rental	Oil	Gas	Other

Legend

- 26060004
- Wildlife
- Counties



TRACT 46078 - Iberia Parish, Louisiana

All lands now or formerly constituting the beds and bottoms of water bodies of whatever description and nature owned by the State of Louisiana and located within the geographical boundaries of the Attakapas Island Wildlife Management Area and not presently under mineral lease by the State of Louisiana as of June 10, 2026, the area being set forth as follows: Beginning a point having Coordinates of X = 1,952,768.81 and Y = 486,551.40; thence East 11,785.71 feet to a point having Coordinates of X = 1,964,554.52 and Y = 486,551.40; thence South 9,240.00 feet to a point having Coordinates of X = 1,964,554.52 and Y = 477,311.40; thence West 11,785.71 feet to a point having Coordinates of X = 1,952,768.81 and Y = 477,311.40; thence North 9,240.00 feet to the point of beginning, (This tract includes only the Attakapas Island Wildlife Management Area and excludes any portion of the above described tract that lies outside of the Attakapas Island Wildlife Management Area), containing approximately **853 acres**, all as more particularly outlined on a plat on file in the Office of State Resources, Department of Conservation and Energy. All bearings, distances and coordinates are based on Louisiana Coordinate System of 1927, (North or South Zone).

NOTE: The above description of the Tract nominated for lease has been provided and corrected, where required, exclusively by the nomination party. Any mineral lease selected from this Tract and awarded by the Louisiana State Mineral and Energy Board shall be without warranty of any kind, either express, implied, or statutory, including, but not limited to, the implied warranties of merchantability and fitness for a particular purpose. Should the mineral lease awarded by the Louisiana State Mineral and Energy Board be subsequently modified, cancelled or abrogated due to the existence of conflicting leases, operating agreements, private claims or other future obligations or conditions which may affect all or any portion of the leased Tract, it shall not relieve the Lessee of the obligation to pay any bonus due thereon to the Louisiana State Mineral and Energy Board, nor shall the Louisiana State Mineral and Energy Board be obligated to refund any consideration paid by the Lessor prior to such modification, cancellation, or abrogation, including, but not limited to, bonuses, rentals and royalties.

NOTE: This tract is located in the Attakapas Island Wildlife Management Area under the jurisdiction of the Louisiana Department of Wildlife and Fisheries which has promulgated rules and regulations for the protection of game and wildlife on the aforesaid Tract and, therefore, shall be subject to said rules and regulations, a copy of which may be obtained from the Department of Wildlife and Fisheries. In addition to the specific rules and regulations applicable, the following shall apply regarding operations under this mineral lease:

1. No activities will be allowed without written authorization from the Louisiana Department of Wildlife and Fisheries. All projects will be coordinated and approved by the appropriate WMA Manager prior to any activities on the wildlife management area.

2. Proposed projects will be evaluated on a case by case basis. Modifications to proposed project features, including, but not limited to, access routes, spoil placement, well sites, flowlines and appurtenant structures may be required by the Department of Wildlife and Fisheries.

3. Compensatory mitigation will be required to offset unavoidable wetland impacts.

4. Removal of all structures, facilities and equipment will be required within 120 days of abandonment unless otherwise agreed to in writing by the Department of Wildlife and Fisheries.

5. No activities will be allowed during the hunting season unless approved by the Department.

6. Compliance with the said WMA regulations will be required unless otherwise specified by the Department.

7. Prior to submitting applications for wetland permits to Federal and State permitting agencies the leaseholder shall coordinate project details with the Department of Wildlife and Fisheries. Contact person for the Department will be Mike Perot at (225) 765-3978.

8. Additionally, the Department will require a Minimum royalty for years 1-3 of 18.5% (rate will run for 3 years on 1st production). After 3 years of production, royalty will increase to 2% over the accepted bid rate. Production must begin within 24 months after execution of lease; otherwise royalty will increase to 4% over the accepted bid rate.

NOTE: The State of Louisiana does hereby reserve, and this lease shall be subject to, the imprescriptible right of surface use in the nature of a servitude in favor of the Department of Conservation and Energy, including its Offices and Commissions, for the sole purpose of implementing, constructing, servicing and maintaining approved coastal zone management and/or restoration projects. Utilization of any and all rights derived under this lease by the mineral lessee, its agents, successors or assigns, shall not interfere with nor hinder the reasonable surface use by the Department of Conservation and Energy, its Offices or Commissions, as herein above reserved.

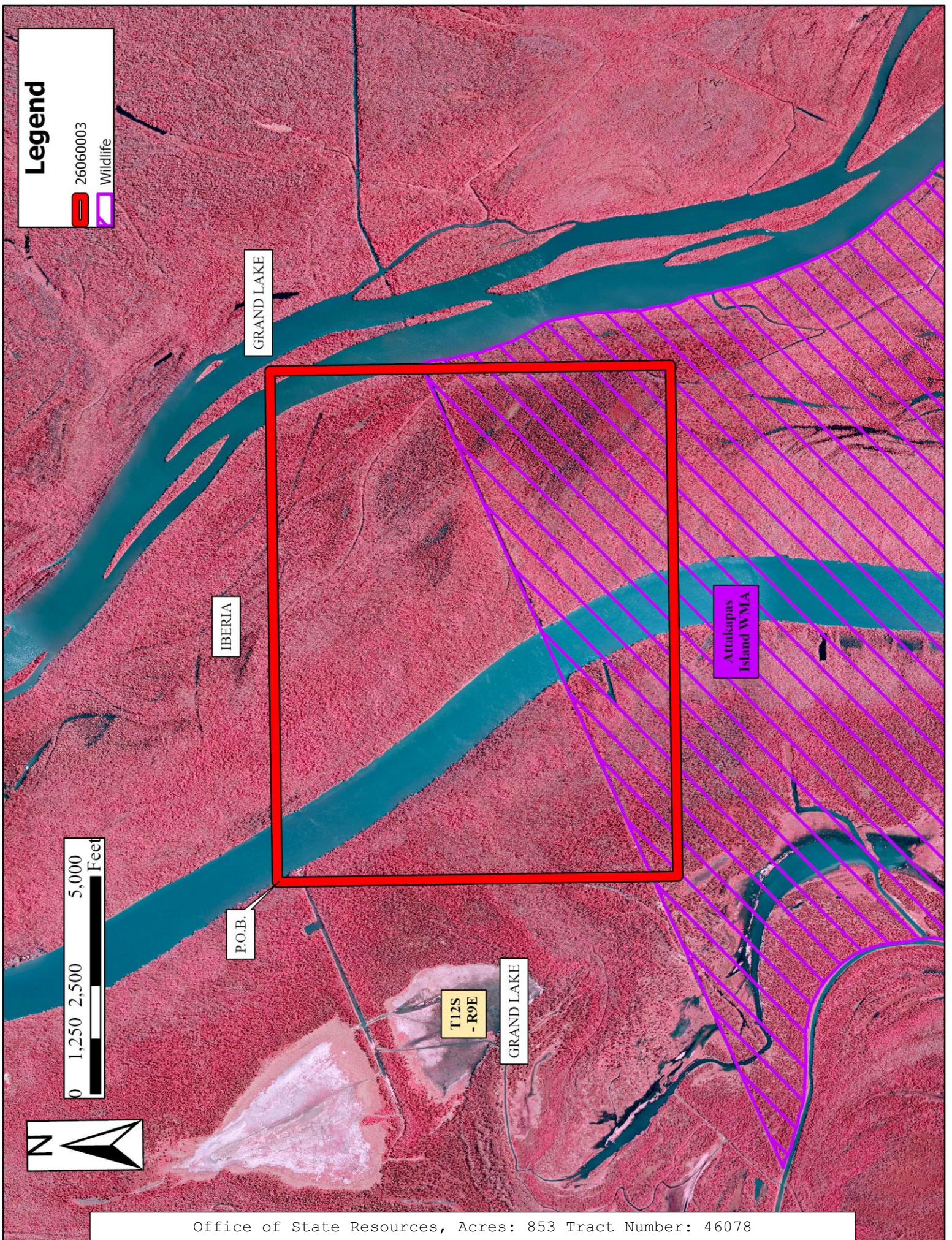
Applicant: HAROLD J. ANDERSON, INC.

Bidder	Cash Payment	Price/ Acre	Rental	Oil	Gas	Other

Legend

26060003

Wildlife



GRAND LAKE

IBERIA

P.O.B.

T12S
- R9E

GRAND LAKE

Attakapas
Island WMA



TRACT 46079 - Iberia St. Martin and St. Mary Parishes, Louisiana

All lands now or formerly constituting the beds and bottoms of water bodies of whatever description and nature owned by the State of Louisiana and located within the geographical boundaries of the Attakapas Island Wildlife Management Area and not presently under mineral lease by the State of Louisiana as of June 10, 2026, the area being set forth as follows: Beginning at a point having Coordinates of X = 1,952,768.81 and Y = 477,311.40; thence East 11,785.71 feet to a point having Coordinates of X = 1,964,554.52 and Y = 477,311.40; thence South 9,240.00 feet to a point having Coordinates of X = 1,964,554.52 and Y = 468,071.40; thence West 11,785.71 feet to a point having Coordinates of X = 1,952,768.81 and Y = 468,071.40; thence North 9,240.00 feet to the point of beginning, containing approximately **2,500 acres**, all as more particularly outlined on a plat on file in the Office of State Resources, Department of Conservation and Energy. All bearings, distances and coordinates are based on Louisiana Coordinate System of 1927, (North or South Zone).

NOTE: The above description of the Tract nominated for lease has been provided and corrected, where required, exclusively by the nomination party. Any mineral lease selected from this Tract and awarded by the Louisiana State Mineral and Energy Board shall be without warranty of any kind, either express, implied, or statutory, including, but not limited to, the implied warranties of merchantability and fitness for a particular purpose. Should the mineral lease awarded by the Louisiana State Mineral and Energy Board be subsequently modified, cancelled or abrogated due to the existence of conflicting leases, operating agreements, private claims or other future obligations or conditions which may affect all or any portion of the leased Tract, it shall not relieve the Lessee of the obligation to pay any bonus due thereon to the Louisiana State Mineral and Energy Board, nor shall the Louisiana State Mineral and Energy Board be obligated to refund any consideration paid by the Lessor prior to such modification, cancellation, or abrogation, including, but not limited to, bonuses, rentals and royalties.

NOTE: This tract is located in the Attakapas Island Wildlife Management Area under the jurisdiction of the Louisiana Department of Wildlife and Fisheries which has promulgated rules and regulations for the protection of game and wildlife on the aforesaid Tract and, therefore, shall be subject to said rules and regulations, a copy of which may be obtained from the Department of Wildlife and Fisheries. In addition to the specific rules and regulations applicable, the following shall apply regarding operations under this mineral lease:

1. No activities will be allowed without written authorization from the Louisiana Department of Wildlife and Fisheries. All projects will be coordinated and approved by the appropriate WMA Manager prior to any activities on the wildlife management area.
2. Proposed projects will be evaluated on a case by case basis. Modifications to proposed project features, including, but not limited to, access routes,

spoil placement, well sites, flowlines and appurtenant structures may be required by the Department of Wildlife and Fisheries.

3. Compensatory mitigation will be required to offset unavoidable wetland impacts.

4. Removal of all structures, facilities and equipment will be required within 120 days of abandonment unless otherwise agreed to in writing by the Department of Wildlife and Fisheries.

5. No activities will be allowed during the hunting season unless approved by the Department.

6. Compliance with the said WMA regulations will be required unless otherwise specified by the Department.

7. Prior to submitting applications for wetland permits to Federal and State permitting agencies the leaseholder shall coordinate project details with the Department of Wildlife and Fisheries. Contact person for the Department will be Mike Perot at (225) 765-3978.

8. Additionally, the Department will require a Minimum royalty for years 1-3 of 18.5% (rate will run for 3 years on 1st production). After 3 years of production, royalty will increase to 2% over the accepted bid rate. Production must begin within 24 months after execution of lease; otherwise royalty will increase to 4% over the accepted bid rate.

NOTE: The State of Louisiana does hereby reserve, and this lease shall be subject to, the imprescriptible right of surface use in the nature of a servitude in favor of the Department of Conservation and Energy, including its Offices and Commissions, for the sole purpose of implementing, constructing, servicing and maintaining approved coastal zone management and/or restoration projects. Utilization of any and all rights derived under this lease by the mineral lessee, its agents, successors or assigns, shall not interfere with nor hinder the reasonable surface use by the Department of Conservation and Energy, its Offices or Commissions, as herein above reserved.

Applicant: HAROLD J. ANDERSON, INC.

Bidder	Cash Payment	Price/ Acre	Rental	Oil	Gas	Other

Legend

26060008

Wildlife

Counties



Attakapas
Island WMA

T12S - R9E

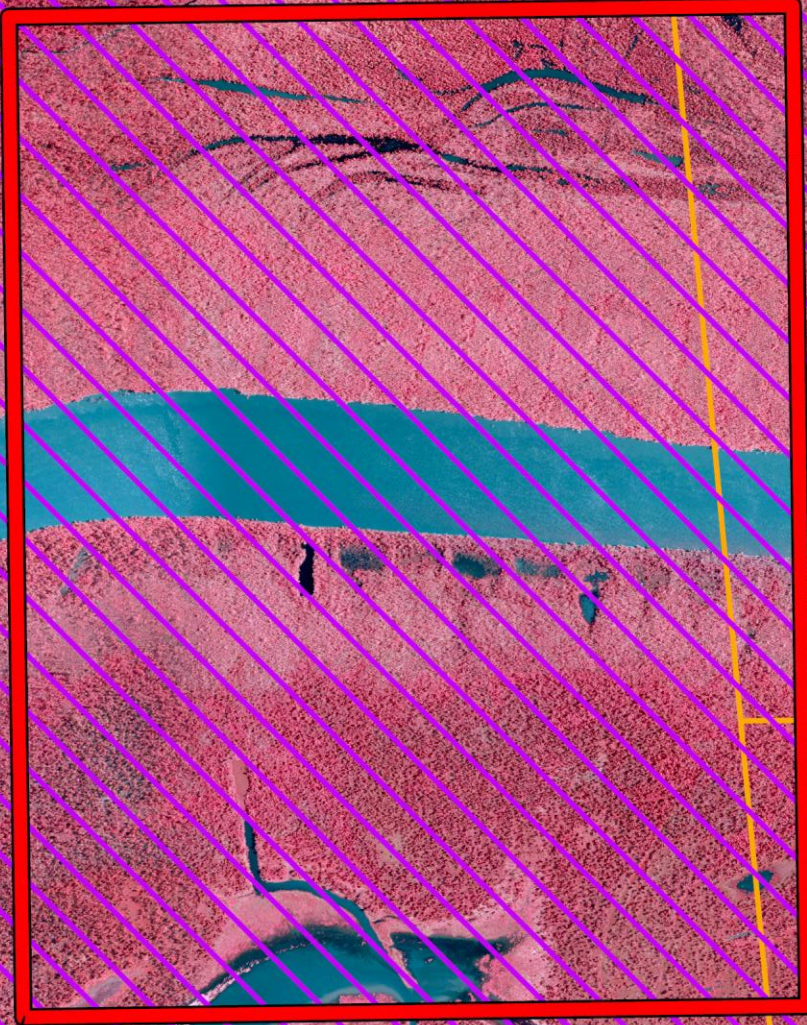
IBERIA

GRAND LAKE

ST MARTIN

ST MARY

P.O.B.



TRACT 46080 - Iberia and St. Martin Parishes, Louisiana

All lands now or formerly constituting the beds and bottoms of water bodies of whatever description and nature owned by the State of Louisiana and located within the geographical boundaries of the Attakapas Island Wildlife Management Area and not presently under mineral lease by the State of Louisiana as of June 10, 2026, the area being set forth as follows: Beginning at a point having Coordinates of X = 1,983,034.52 and Y = 477,311.40; thence South 9,240.00 feet to a point having Coordinates of X = 1,983,034.52 and Y = 468,071.40; thence West 18,480.00 feet to a point having Coordinates of X = 1,964,554.52 and Y = 468,071.40; thence North 9,240.00 feet to a point having Coordinates of X = 1,964,554.52 and Y = 477,311.40; thence East 18,480.00 feet to the point of beginning, (This tract includes only the Attakapas Island Wildlife Management Area and excludes any portion of the above described tract that lies outside of the Attakapas Island Wildlife Management Area), containing approximately **770 acres**, all as more particularly outlined on a plat on file in the Office of State Resources, Department of Conservation and Energy. All bearings, distances and coordinates are based on Louisiana Coordinate System of 1927, (North or South Zone).

NOTE: The above description of the Tract nominated for lease has been provided and corrected, where required, exclusively by the nomination party. Any mineral lease selected from this Tract and awarded by the Louisiana State Mineral and Energy Board shall be without warranty of any kind, either express, implied, or statutory, including, but not limited to, the implied warranties of merchantability and fitness for a particular purpose. Should the mineral lease awarded by the Louisiana State Mineral and Energy Board be subsequently modified, cancelled or abrogated due to the existence of conflicting leases, operating agreements, private claims or other future obligations or conditions which may affect all or any portion of the leased Tract, it shall not relieve the Lessee of the obligation to pay any bonus due thereon to the Louisiana State Mineral and Energy Board, nor shall the Louisiana State Mineral and Energy Board be obligated to refund any consideration paid by the Lessor prior to such modification, cancellation, or abrogation, including, but not limited to, bonuses, rentals and royalties.

NOTE: This tract is located in the Attakapas Island Wildlife Management Area under the jurisdiction of the Louisiana Department of Wildlife and Fisheries which has promulgated rules and regulations for the protection of game and wildlife on the aforesaid Tract and, therefore, shall be subject to said rules and regulations, a copy of which may be obtained from the Department of Wildlife and Fisheries. In addition to the specific rules and regulations applicable, the following shall apply regarding operations under this mineral lease:

1. No activities will be allowed without written authorization from the Louisiana Department of Wildlife and Fisheries. All projects will be coordinated and approved by the appropriate WMA Manager prior to any activities on the wildlife management area.

2. Proposed projects will be evaluated on a case by case basis. Modifications to proposed project features, including, but not limited to, access routes, spoil placement, well sites, flowlines and appurtenant structures may be required by the Department of Wildlife and Fisheries.

3. Compensatory mitigation will be required to offset unavoidable wetland impacts.

4. Removal of all structures, facilities and equipment will be required within 120 days of abandonment unless otherwise agreed to in writing by the Department of Wildlife and Fisheries.

5. No activities will be allowed during the hunting season unless approved by the Department.

6. Compliance with the said WMA regulations will be required unless otherwise specified by the Department.

7. Prior to submitting applications for wetland permits to Federal and State permitting agencies the leaseholder shall coordinate project details with the Department of Wildlife and Fisheries. Contact person for the Department will be Mike Perot at (225) 765-3978.

8. Additionally, the Department will require a Minimum royalty for years 1-3 of 18.5% (rate will run for 3 years on 1st production). After 3 years of production, royalty will increase to 2% over the accepted bid rate. Production must begin within 24 months after execution of lease; otherwise royalty will increase to 4% over the accepted bid rate.

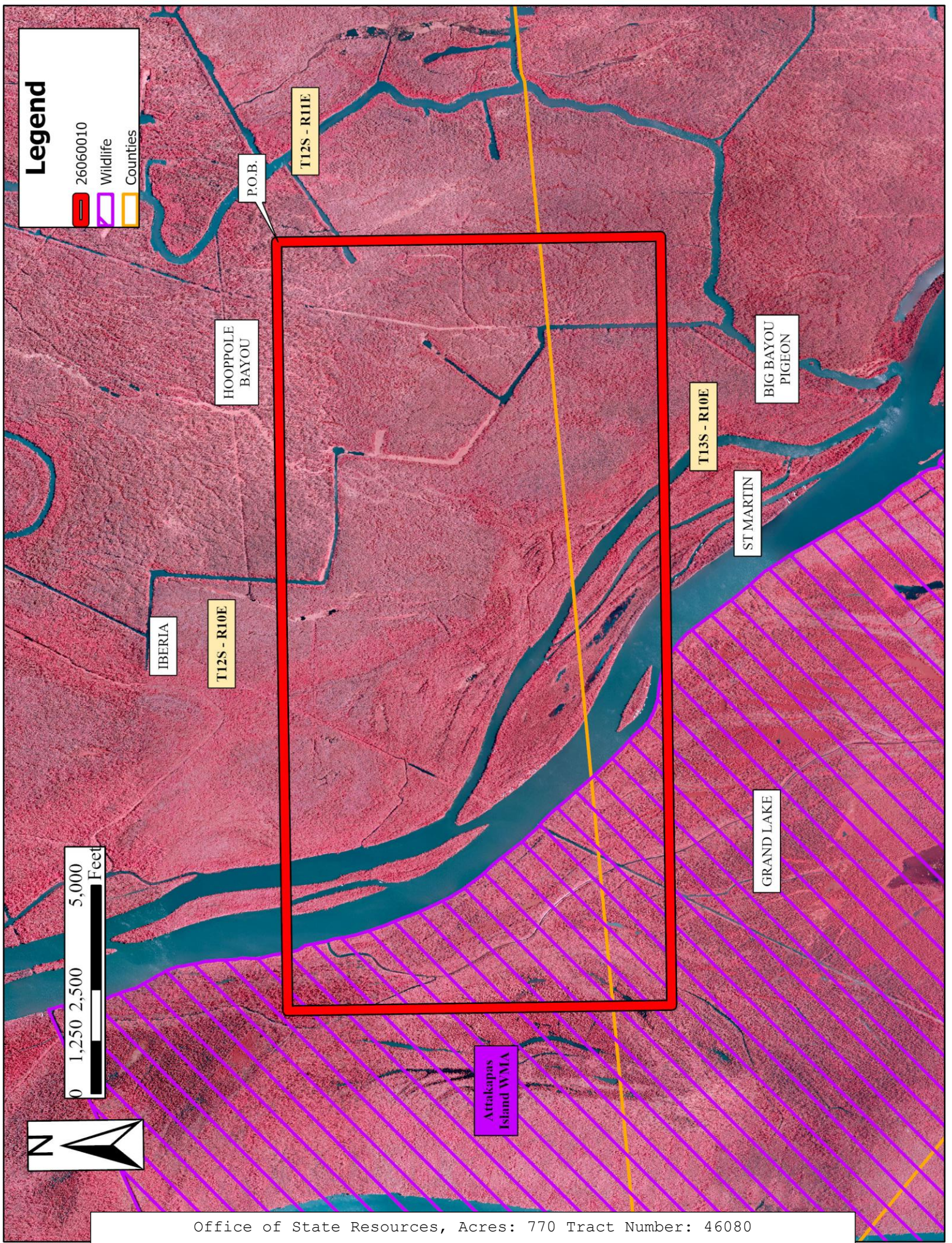
NOTE: The State of Louisiana does hereby reserve, and this lease shall be subject to, the imprescriptible right of surface use in the nature of a servitude in favor of the Department of Conservation and Energy, including its Offices and Commissions, for the sole purpose of implementing, constructing, servicing and maintaining approved coastal zone management and/or restoration projects. Utilization of any and all rights derived under this lease by the mineral lessee, its agents, successors or assigns, shall not interfere with nor hinder the reasonable surface use by the Department of Conservation and Energy, its Offices or Commissions, as herein above reserved.

Applicant: HAROLD J. ANDERSON, INC.

Bidder	Cash Payment	Price/ Acre	Rental	Oil	Gas	Other

Legend

- 26060010
- Wildlife
- Counties



TRACT 46081 - St. Martin and St. Mary Parishes, Louisiana

All lands now or formerly constituting the beds and bottoms of water bodies of whatever description and nature owned by the State of Louisiana and located within the geographical boundaries of the Attakapas Island Wildlife Management Area and not presently under mineral lease by the State of Louisiana as of June 10, 2026, the area being set forth as follows: Beginning at a point having Coordinates of X = 1,956,978.10 and Y = 468,071.40; thence East 11,785.71 feet to a point having Coordinates of X = 1,968,763.81 and Y = 468,071.40; thence South 9,240.00 feet to a point having Coordinates of X = 1,968,763.81 and Y = 458,831.40; thence West 11,785.71 feet to a point having Coordinates of X = 1,956,978.10 and Y = 458,831.40; thence North 9,240.00 feet to the point of beginning, containing approximately **2,500 acres**, all as more particularly outlined on a plat on file in the Office of State Resources, Department of Conservation and Energy. All bearings, distances and coordinates are based on Louisiana Coordinate System of 1927, (North or South Zone).

NOTE: The above description of the Tract nominated for lease has been provided and corrected, where required, exclusively by the nomination party. Any mineral lease selected from this Tract and awarded by the Louisiana State Mineral and Energy Board shall be without warranty of any kind, either express, implied, or statutory, including, but not limited to, the implied warranties of merchantability and fitness for a particular purpose. Should the mineral lease awarded by the Louisiana State Mineral and Energy Board be subsequently modified, cancelled or abrogated due to the existence of conflicting leases, operating agreements, private claims or other future obligations or conditions which may affect all or any portion of the leased Tract, it shall not relieve the Lessee of the obligation to pay any bonus due thereon to the Louisiana State Mineral and Energy Board, nor shall the Louisiana State Mineral and Energy Board be obligated to refund any consideration paid by the Lessor prior to such modification, cancellation, or abrogation, including, but not limited to, bonuses, rentals and royalties.

NOTE: This tract is located in the Attakapas Island Wildlife Management Area under the jurisdiction of the Louisiana Department of Wildlife and Fisheries which has promulgated rules and regulations for the protection of game and wildlife on the aforesaid Tract and, therefore, shall be subject to said rules and regulations, a copy of which may be obtained from the Department of Wildlife and Fisheries. In addition to the specific rules and regulations applicable, the following shall apply regarding operations under this mineral lease:

1. No activities will be allowed without written authorization from the Louisiana Department of Wildlife and Fisheries. All projects will be coordinated and approved by the appropriate WMA Manager prior to any activities on the wildlife management area.
2. Proposed projects will be evaluated on a case by case basis. Modifications to proposed project features, including, but not limited to, access routes,

spoil placement, well sites, flowlines and appurtenant structures may be required by the Department of Wildlife and Fisheries.

3. Compensatory mitigation will be required to offset unavoidable wetland impacts.

4. Removal of all structures, facilities and equipment will be required within 120 days of abandonment unless otherwise agreed to in writing by the Department of Wildlife and Fisheries.

5. No activities will be allowed during the hunting season unless approved by the Department.

6. Compliance with the said WMA regulations will be required unless otherwise specified by the Department.

7. Prior to submitting applications for wetland permits to Federal and State permitting agencies the leaseholder shall coordinate project details with the Department of Wildlife and Fisheries. Contact person for the Department will be Mike Perot at (225) 765-3978.

8. Additionally, the Department will require a Minimum royalty for years 1-3 of 18.5% (rate will run for 3 years on 1st production). After 3 years of production, royalty will increase to 2% over the accepted bid rate. Production must begin within 24 months after execution of lease; otherwise royalty will increase to 4% over the accepted bid rate.

NOTE: The State of Louisiana does hereby reserve, and this lease shall be subject to, the imprescriptible right of surface use in the nature of a servitude in favor of the Department of Conservation and Energy, including its Offices and Commissions, for the sole purpose of implementing, constructing, servicing and maintaining approved coastal zone management and/or restoration projects. Utilization of any and all rights derived under this lease by the mineral lessee, its agents, successors or assigns, shall not interfere with nor hinder the reasonable surface use by the Department of Conservation and Energy, its Offices or Commissions, as herein above reserved.

Applicant: HAROLD J. ANDERSON, INC.

Bidder	Cash Payment	Price/ Acre	Rental	Oil	Gas	Other

Legend

26060011

Wildlife

Counties

0 1,000 2,000 4,000 Feet



Attakapas
Island WMA

P.O.B.

T13S - R11E

ST MARTIN

ST MARY

GRAND LAKE

TRACT 46082 - St. Martin Parish, Louisiana

All lands now or formerly constituting the beds and bottoms of water bodies of whatever description and nature owned by the State of Louisiana and located within the geographical boundaries of the Attakapas Island Wildlife Management Area and not presently under mineral lease by the State of Louisiana as of June 10, 2026, the area being set forth as follows: Beginning at a point having Coordinates of X = 1,968,763.81 and Y = 468,071.40; thence East 14,270.71 feet to a point having Coordinates of X = 1,983,034.52 and Y = 468,071.40; thence South 9,240.00 feet to a point having Coordinates of X = 1,983,034.52 and Y = 458,831.40; thence West 14,270.71 feet to a point having Coordinates of X = 1,968,763.81 and Y = 458,831.40; thence North 9,240.00 feet to the point of beginning, (This tract includes only the Attakapas Island Wildlife Management Area and excludes any portion of the above described tract that lies outside of the Attakapas Island Wildlife Management Area), containing approximately **1,623 acres**, all as more particularly outlined on a plat on file in the Office of State Resources, Department of Conservation and Energy. All bearings, distances and coordinates are based on Louisiana Coordinate System of 1927, (North or South Zone).

NOTE: The above description of the Tract nominated for lease has been provided and corrected, where required, exclusively by the nomination party. Any mineral lease selected from this Tract and awarded by the Louisiana State Mineral and Energy Board shall be without warranty of any kind, either express, implied, or statutory, including, but not limited to, the implied warranties of merchantability and fitness for a particular purpose. Should the mineral lease awarded by the Louisiana State Mineral and Energy Board be subsequently modified, cancelled or abrogated due to the existence of conflicting leases, operating agreements, private claims or other future obligations or conditions which may affect all or any portion of the leased Tract, it shall not relieve the Lessee of the obligation to pay any bonus due thereon to the Louisiana State Mineral and Energy Board, nor shall the Louisiana State Mineral and Energy Board be obligated to refund any consideration paid by the Lessor prior to such modification, cancellation, or abrogation, including, but not limited to, bonuses, rentals and royalties.

NOTE: This tract is located in the Attakapas Island Wildlife Management Area under the jurisdiction of the Louisiana Department of Wildlife and Fisheries which has promulgated rules and regulations for the protection of game and wildlife on the aforesaid Tract and, therefore, shall be subject to said rules and regulations, a copy of which may be obtained from the Department of Wildlife and Fisheries. In addition to the specific rules and regulations applicable, the following shall apply regarding operations under this mineral lease:

1. No activities will be allowed without written authorization from the Louisiana Department of Wildlife and Fisheries. All projects will be coordinated and approved by the appropriate WMA Manager prior to any activities on the wildlife management area.

2. Proposed projects will be evaluated on a case by case basis. Modifications to proposed project features, including, but not limited to, access routes, spoil placement, well sites, flowlines and appurtenant structures may be required by the Department of Wildlife and Fisheries.

3. Compensatory mitigation will be required to offset unavoidable wetland impacts.

4. Removal of all structures, facilities and equipment will be required within 120 days of abandonment unless otherwise agreed to in writing by the Department of Wildlife and Fisheries.

5. No activities will be allowed during the hunting season unless approved by the Department.

6. Compliance with the said WMA regulations will be required unless otherwise specified by the Department.

7. Prior to submitting applications for wetland permits to Federal and State permitting agencies the leaseholder shall coordinate project details with the Department of Wildlife and Fisheries. Contact person for the Department will be Mike Perot at (225) 765-3978.

8. Additionally, the Department will require a Minimum royalty for years 1-3 of 18.5% (rate will run for 3 years on 1st production). After 3 years of production, royalty will increase to 2% over the accepted bid rate. Production must begin within 24 months after execution of lease; otherwise royalty will increase to 4% over the accepted bid rate.

NOTE: The State of Louisiana does hereby reserve, and this lease shall be subject to, the imprescriptible right of surface use in the nature of a servitude in favor of the Department of Conservation and Energy, including its Offices and Commissions, for the sole purpose of implementing, constructing, servicing and maintaining approved coastal zone management and/or restoration projects. Utilization of any and all rights derived under this lease by the mineral lessee, its agents, successors or assigns, shall not interfere with nor hinder the reasonable surface use by the Department of Conservation and Energy, its Offices or Commissions, as herein above reserved.

Applicant: HAROLD J. ANDERSON, INC.

Bidder	Cash Payment	Price/ Acre	Rental	Oil	Gas	Other

Legend

- 26060012
- Wildlife
- Counties

BIG
BAYOU
PIGEON

GRAND LAKE

ST MARTIN

T13S - R10E

P.O.B.

Attrakapas
Island WMA



TRACT 46083 - St. Martin and St. Mary Parishes, Louisiana

All lands now or formerly constituting the beds and bottoms of water bodies of whatever description and nature owned by the State of Louisiana and located within the geographical boundaries of the Attakapas Island Wildlife Management Area and not presently under mineral lease by the State of Louisiana as of June 10, 2026, the area being set forth as follows: Beginning at a point having Coordinates of X = 1,959,463.10 and Y = 458,831.40; thence East 11,785.71 feet to a point having Coordinates of X = 1,971,248.81 and Y = 458,831.40; thence South 9,240.00 feet to a point having Coordinates of X = 1,971,248.81 and Y = 449,591.40; thence West 11,785.71 feet to a point having Coordinates of X = 1,959,463.10 and Y = 449,591.40; thence North 9,240.00 feet to the point of beginning, containing approximately **2,500 acres**, all as more particularly outlined on a plat on file in the Office of State Resources, Department of Conservation and Energy. All bearings, distances and coordinates are based on Louisiana Coordinate System of 1927, (North or South Zone).

NOTE: The above description of the Tract nominated for lease has been provided and corrected, where required, exclusively by the nomination party. Any mineral lease selected from this Tract and awarded by the Louisiana State Mineral and Energy Board shall be without warranty of any kind, either express, implied, or statutory, including, but not limited to, the implied warranties of merchantability and fitness for a particular purpose. Should the mineral lease awarded by the Louisiana State Mineral and Energy Board be subsequently modified, cancelled or abrogated due to the existence of conflicting leases, operating agreements, private claims or other future obligations or conditions which may affect all or any portion of the leased Tract, it shall not relieve the Lessee of the obligation to pay any bonus due thereon to the Louisiana State Mineral and Energy Board, nor shall the Louisiana State Mineral and Energy Board be obligated to refund any consideration paid by the Lessor prior to such modification, cancellation, or abrogation, including, but not limited to, bonuses, rentals and royalties.

NOTE: This tract is located in the Attakapas Island Wildlife Management Area under the jurisdiction of the Louisiana Department of Wildlife and Fisheries which has promulgated rules and regulations for the protection of game and wildlife on the aforesaid Tract and, therefore, shall be subject to said rules and regulations, a copy of which may be obtained from the Department of Wildlife and Fisheries. In addition to the specific rules and regulations applicable, the following shall apply regarding operations under this mineral lease:

1. No activities will be allowed without written authorization from the Louisiana Department of Wildlife and Fisheries. All projects will be coordinated and approved by the appropriate WMA Manager prior to any activities on the wildlife management area.
2. Proposed projects will be evaluated on a case by case basis. Modifications to proposed project features, including, but not limited to, access routes,

spoil placement, well sites, flowlines and appurtenant structures may be required by the Department of Wildlife and Fisheries.

3. Compensatory mitigation will be required to offset unavoidable wetland impacts.

4. Removal of all structures, facilities and equipment will be required within 120 days of abandonment unless otherwise agreed to in writing by the Department of Wildlife and Fisheries.

5. No activities will be allowed during the hunting season unless approved by the Department.

6. Compliance with the said WMA regulations will be required unless otherwise specified by the Department.

7. Prior to submitting applications for wetland permits to Federal and State permitting agencies the leaseholder shall coordinate project details with the Department of Wildlife and Fisheries. Contact person for the Department will be Mike Perot at (225) 765-3978.

8. Additionally, the Department will require a Minimum royalty for years 1-3 of 18.5% (rate will run for 3 years on 1st production). After 3 years of production, royalty will increase to 2% over the accepted bid rate. Production must begin within 24 months after execution of lease; otherwise royalty will increase to 4% over the accepted bid rate.

NOTE: The State of Louisiana does hereby reserve, and this lease shall be subject to, the imprescriptible right of surface use in the nature of a servitude in favor of the Department of Conservation and Energy, including its Offices and Commissions, for the sole purpose of implementing, constructing, servicing and maintaining approved coastal zone management and/or restoration projects. Utilization of any and all rights derived under this lease by the mineral lessee, its agents, successors or assigns, shall not interfere with nor hinder the reasonable surface use by the Department of Conservation and Energy, its Offices or Commissions, as herein above reserved.

Applicant: HAROLD J. ANDERSON, INC.

Bidder	Cash Payment	Price/ Acre	Rental	Oil	Gas	Other

Legend

-  26060017
-  Wildlife
-  Counties

ST MARTIN

Attakapas
Island WMA

GRAND LAKE



P.O.B.

ST MARY



TRACT 46084 - St. Martin and St. Mary Parishes, Louisiana

All lands now or formerly constituting the beds and bottoms of water bodies of whatever description and nature owned by the State of Louisiana and located within the geographical boundaries of the Attakapas Island Wildlife Management Area and not presently under mineral lease by the State of Louisiana as of June 10, 2026, the area being set forth as follows: Beginning at a point having Coordinates of X = 1,971,248.81 and Y = 458,831.40; thence East 11,785.71 feet to a point having Coordinates of X = 1,983,034.52 and Y = 458,831.40; thence South 9,240.00 feet to a point having Coordinates of X = 1,983,034.52 and Y = 449,591.40; thence West 11,785.71 feet to a point having Coordinates of X = 1,971,248.81 and Y = 449,591.40; thence North 9,240.00 feet to the point of beginning, (This tract includes only the Attakapas Island Wildlife Management Area and excludes any portion of the above described tract that lies outside of the Attakapas Island Wildlife Management Area), containing approximately **2,398 acres**, all as more particularly outlined on a plat on file in the Office of State Resources, Department of Conservation and Energy. All bearings, distances and coordinates are based on Louisiana Coordinate System of 1927, (North or South Zone).

NOTE: The above description of the Tract nominated for lease has been provided and corrected, where required, exclusively by the nomination party. Any mineral lease selected from this Tract and awarded by the Louisiana State Mineral and Energy Board shall be without warranty of any kind, either express, implied, or statutory, including, but not limited to, the implied warranties of merchantability and fitness for a particular purpose. Should the mineral lease awarded by the Louisiana State Mineral and Energy Board be subsequently modified, cancelled or abrogated due to the existence of conflicting leases, operating agreements, private claims or other future obligations or conditions which may affect all or any portion of the leased Tract, it shall not relieve the Lessee of the obligation to pay any bonus due thereon to the Louisiana State Mineral and Energy Board, nor shall the Louisiana State Mineral and Energy Board be obligated to refund any consideration paid by the Lessor prior to such modification, cancellation, or abrogation, including, but not limited to, bonuses, rentals and royalties.

NOTE: This tract is located in the Attakapas Island Wildlife Management Area under the jurisdiction of the Louisiana Department of Wildlife and Fisheries which has promulgated rules and regulations for the protection of game and wildlife on the aforesaid Tract and, therefore, shall be subject to said rules and regulations, a copy of which may be obtained from the Department of Wildlife and Fisheries. In addition to the specific rules and regulations applicable, the following shall apply regarding operations under this mineral lease:

1. No activities will be allowed without written authorization from the Louisiana Department of Wildlife and Fisheries. All projects will be coordinated and approved by the appropriate WMA Manager prior to any activities on the wildlife management area.

2. Proposed projects will be evaluated on a case by case basis. Modifications to proposed project features, including, but not limited to, access routes, spoil placement, well sites, flowlines and appurtenant structures may be required by the Department of Wildlife and Fisheries.

3. Compensatory mitigation will be required to offset unavoidable wetland impacts.

4. Removal of all structures, facilities and equipment will be required within 120 days of abandonment unless otherwise agreed to in writing by the Department of Wildlife and Fisheries.

5. No activities will be allowed during the hunting season unless approved by the Department.

6. Compliance with the said WMA regulations will be required unless otherwise specified by the Department.

7. Prior to submitting applications for wetland permits to Federal and State permitting agencies the leaseholder shall coordinate project details with the Department of Wildlife and Fisheries. Contact person for the Department will be Mike Perot at (225) 765-3978.

8. Additionally, the Department will require a Minimum royalty for years 1-3 of 18.5% (rate will run for 3 years on 1st production). After 3 years of production, royalty will increase to 2% over the accepted bid rate. Production must begin within 24 months after execution of lease; otherwise royalty will increase to 4% over the accepted bid rate.

NOTE: The State of Louisiana does hereby reserve, and this lease shall be subject to, the imprescriptible right of surface use in the nature of a servitude in favor of the Department of Conservation and Energy, including its Offices and Commissions, for the sole purpose of implementing, constructing, servicing and maintaining approved coastal zone management and/or restoration projects. Utilization of any and all rights derived under this lease by the mineral lessee, its agents, successors or assigns, shall not interfere with nor hinder the reasonable surface use by the Department of Conservation and Energy, its Offices or Commissions, as herein above reserved.

Applicant: HAROLD J. ANDERSON, INC.

Bidder	Cash Payment	Price/ Acre	Rental	Oil	Gas	Other

Legend

- 26060018
- Wildlife
- Counties

ST MARTIN

GRAND LAKE



P.O.B.

Attakapas
Island WMA

ST MARY



TRACT 46085 - St. Martin Parish, Louisiana

All lands now or formerly constituting the beds and bottoms of water bodies of whatever description and nature owned by the State of Louisiana and located within the geographical boundaries of the Attakapas Island Wildlife Management Area and not presently under mineral lease by the State of Louisiana as of June 10, 2026, the area being set forth as follows: Beginning at a point having Coordinates of X = 2,001,514.52 and Y = 440,351.40; thence West 18,480.00 feet to a point having Coordinates of X = 1,983,034.52 and Y = 440,351.40; thence North 18,480.00 feet to a point having Coordinates of X = 1,983,034.52 and Y = 458,831.40; thence East 14,415.21 feet to a point on the boundary of Operating Agreement A0406 having a Coordinate of Y = 458,831.40; thence along the boundary of said Operating Agreement A0406 the following courses: South 00 degrees 26 minutes 16 seconds East 548.02 feet, South 00 degrees 46 minutes 43 seconds East 3,947.70 feet and North 89 degrees 09 minutes 47 seconds East 4,007.39 feet to a point having a Coordinate of X = 2,001,514.52; thence South 14,043.19 feet to the point of beginning, (This tract includes only the Attakapas Island Wildlife Management Area and excludes any portion of the above described tract that lies outside of the Attakapas Island Wildlife Management Area), containing approximately **913 acres**, all as more particularly outlined on a plat on file in the Office of State Resources, Department of Conservation and Energy. All bearings, distances and coordinates are based on Louisiana Coordinate System of 1927, (North or South Zone).

NOTE: The above description of the Tract nominated for lease has been provided and corrected, where required, exclusively by the nomination party. Any mineral lease selected from this Tract and awarded by the Louisiana State Mineral and Energy Board shall be without warranty of any kind, either express, implied, or statutory, including, but not limited to, the implied warranties of merchantability and fitness for a particular purpose. Should the mineral lease awarded by the Louisiana State Mineral and Energy Board be subsequently modified, cancelled or abrogated due to the existence of conflicting leases, operating agreements, private claims or other future obligations or conditions which may affect all or any portion of the leased Tract, it shall not relieve the Lessee of the obligation to pay any bonus due thereon to the Louisiana State Mineral and Energy Board, nor shall the Louisiana State Mineral and Energy Board be obligated to refund any consideration paid by the Lessor prior to such modification, cancellation, or abrogation, including, but not limited to, bonuses, rentals and royalties.

NOTE: This tract is located in the Attakapas Island Wildlife Management Area under the jurisdiction of the Louisiana Department of Wildlife and Fisheries which has promulgated rules and regulations for the protection of game and wildlife on the aforesaid Tract and, therefore, shall be subject to said rules and regulations, a copy of which may be obtained from the Department of Wildlife and Fisheries. In addition to the specific rules and regulations applicable, the following shall apply regarding operations under this mineral lease:

1. No activities will be allowed without written authorization from the Louisiana Department of Wildlife and Fisheries. All projects will be coordinated and approved by the appropriate WMA Manager prior to any activities on the wildlife management area.

2. Proposed projects will be evaluated on a case by case basis. Modifications to proposed project features, including, but not limited to, access routes, spoil placement, well sites, flowlines and appurtenant structures may be required by the Department of Wildlife and Fisheries.

3. Compensatory mitigation will be required to offset unavoidable wetland impacts.

4. Removal of all structures, facilities and equipment will be required within 120 days of abandonment unless otherwise agreed to in writing by the Department of Wildlife and Fisheries.

5. No activities will be allowed during the hunting season unless approved by the Department.

6. Compliance with the said WMA regulations will be required unless otherwise specified by the Department.

7. Prior to submitting applications for wetland permits to Federal and State permitting agencies the leaseholder shall coordinate project details with the Department of Wildlife and Fisheries. Contact person for the Department will be Mike Perot at (225) 765-3978.

8. Additionally, the Department will require a Minimum royalty for years 1-3 of 18.5% (rate will run for 3 years on 1st production). After 3 years of production, royalty will increase to 2% over the accepted bid rate. Production must begin within 24 months after execution of lease; otherwise royalty will increase to 4% over the accepted bid rate.

NOTE: The State of Louisiana does hereby reserve, and this lease shall be subject to, the imprescriptible right of surface use in the nature of a servitude in favor of the Department of Conservation and Energy, including its Offices and Commissions, for the sole purpose of implementing, constructing, servicing and maintaining approved coastal zone management and/or restoration projects. Utilization of any and all rights derived under this lease by the mineral lessee, its agents, successors or assigns, shall not interfere with nor hinder the reasonable surface use by the Department of Conservation and Energy, its Offices or Commissions, as herein above reserved.

Applicant: HAROLD J. ANDERSON, INC.

Bidder	Cash Payment	Price/Acre	Rental	Oil	Gas	Other

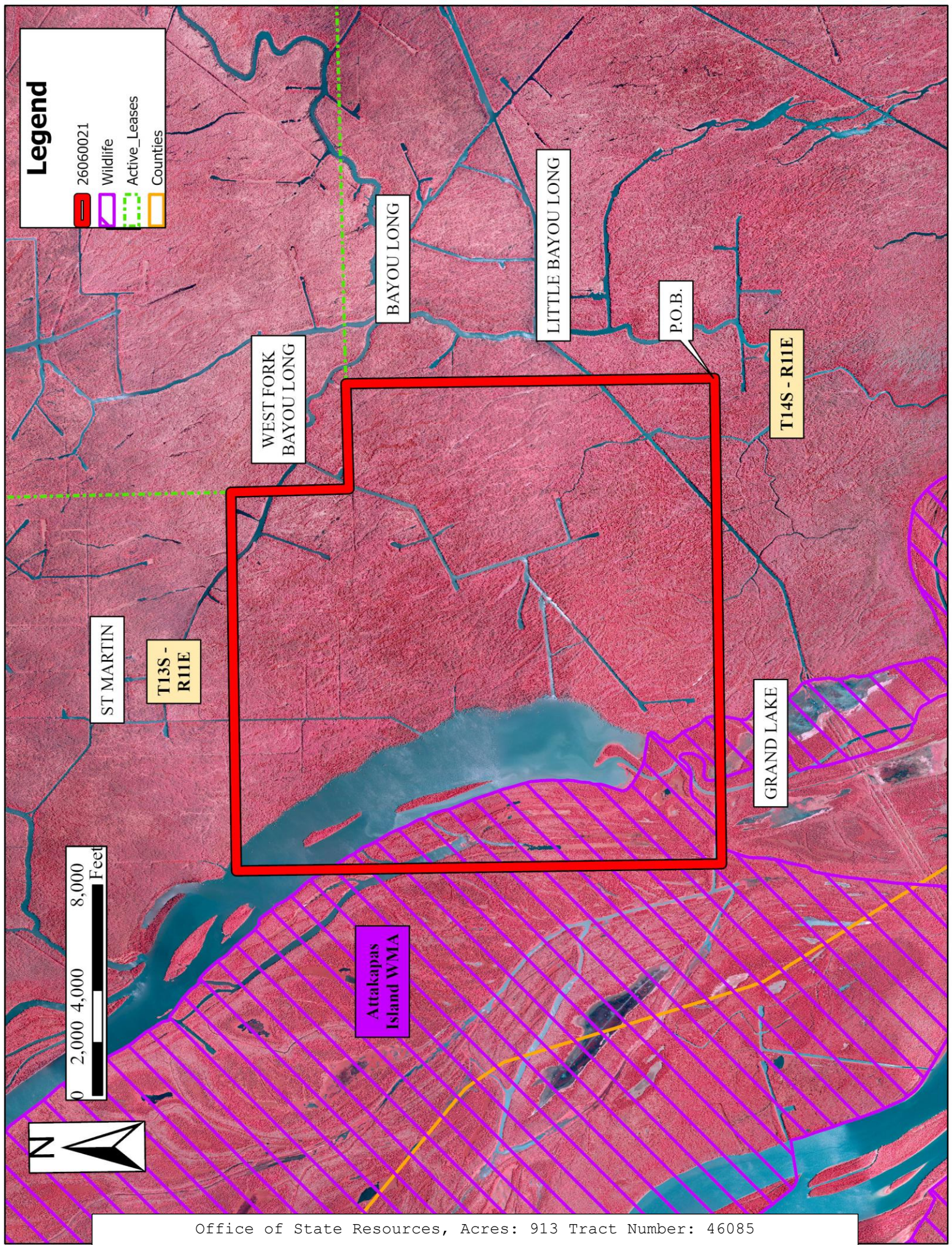
Legend

26060021

Wildlife

Active_Leases

Counties



ST MARTIN

T13S - R11E

WEST FORK BAYOU LONG

BAYOU LONG

LITTLE BAYOU LONG

P.O.B.

T14S - R11E

GRAND LAKE

Attakapas Island WMA

TRACT 46086 - St. Mary Parish, Louisiana

All lands now or formerly constituting the beds and bottoms of water bodies of whatever description and nature owned by the State of Louisiana and located within the geographical boundaries of the Attakapas Island Wildlife Management Area and not presently under mineral lease by the State of Louisiana as of June 10, 2026, the area being set forth as follows: Beginning at a point having Coordinates of X = 1,959,463.10 and Y = 449,591.40; thence East 11,785.71 feet to a point having Coordinates of X = 1,971,248.81 and Y = 449,591.40; thence South 9,240.00 feet to a point having Coordinates of X = 1,971,248.81 and Y = 440,351.40; thence West 11,785.71 feet to a point having Coordinates of X = 1,959,463.10 and Y = 440,351.40; thence North 9,240.00 feet to the point of beginning, (This tract includes only the Attakapas Island Wildlife Management Area and excludes any portion of the above described tract that lies outside of the Attakapas Island Wildlife Management Area), containing approximately **1,909 acres**, all as more particularly outlined on a plat on file in the Office of State Resources, Department of Conservation and Energy. All bearings, distances and coordinates are based on Louisiana Coordinate System of 1927, (North or South Zone).

NOTE: The above description of the Tract nominated for lease has been provided and corrected, where required, exclusively by the nomination party. Any mineral lease selected from this Tract and awarded by the Louisiana State Mineral and Energy Board shall be without warranty of any kind, either express, implied, or statutory, including, but not limited to, the implied warranties of merchantability and fitness for a particular purpose. Should the mineral lease awarded by the Louisiana State Mineral and Energy Board be subsequently modified, cancelled or abrogated due to the existence of conflicting leases, operating agreements, private claims or other future obligations or conditions which may affect all or any portion of the leased Tract, it shall not relieve the Lessee of the obligation to pay any bonus due thereon to the Louisiana State Mineral and Energy Board, nor shall the Louisiana State Mineral and Energy Board be obligated to refund any consideration paid by the Lessor prior to such modification, cancellation, or abrogation, including, but not limited to, bonuses, rentals and royalties.

NOTE: This tract is located in the Attakapas Island Wildlife Management Area under the jurisdiction of the Louisiana Department of Wildlife and Fisheries which has promulgated rules and regulations for the protection of game and wildlife on the aforesaid Tract and, therefore, shall be subject to said rules and regulations, a copy of which may be obtained from the Department of Wildlife and Fisheries. In addition to the specific rules and regulations applicable, the following shall apply regarding operations under this mineral lease:

1. No activities will be allowed without written authorization from the Louisiana Department of Wildlife and Fisheries. All projects will be coordinated and approved by the appropriate WMA Manager prior to any activities on the wildlife management area.

2. Proposed projects will be evaluated on a case by case basis. Modifications to proposed project features, including, but not limited to, access routes, spoil placement, well sites, flowlines and appurtenant structures may be required by the Department of Wildlife and Fisheries.

3. Compensatory mitigation will be required to offset unavoidable wetland impacts.

4. Removal of all structures, facilities and equipment will be required within 120 days of abandonment unless otherwise agreed to in writing by the Department of Wildlife and Fisheries.

5. No activities will be allowed during the hunting season unless approved by the Department.

6. Compliance with the said WMA regulations will be required unless otherwise specified by the Department.

7. Prior to submitting applications for wetland permits to Federal and State permitting agencies the leaseholder shall coordinate project details with the Department of Wildlife and Fisheries. Contact person for the Department will be Mike Perot at (225) 765-3978.

8. Additionally, the Department will require a Minimum royalty for years 1-3 of 18.5% (rate will run for 3 years on 1st production). After 3 years of production, royalty will increase to 2% over the accepted bid rate. Production must begin within 24 months after execution of lease; otherwise royalty will increase to 4% over the accepted bid rate.

NOTE: The State of Louisiana does hereby reserve, and this lease shall be subject to, the imprescriptible right of surface use in the nature of a servitude in favor of the Department of Conservation and Energy, including its Offices and Commissions, for the sole purpose of implementing, constructing, servicing and maintaining approved coastal zone management and/or restoration projects. Utilization of any and all rights derived under this lease by the mineral lessee, its agents, successors or assigns, shall not interfere with nor hinder the reasonable surface use by the Department of Conservation and Energy, its Offices or Commissions, as herein above reserved.

Applicant: HAROLD J. ANDERSON, INC.

Bidder	Cash Payment	Price/Acre	Rental	Oil	Gas	Other

Legend

- 26060019
- Wildlife
- Counties



P.O.B.

ST MARY

Attakapas
Island WMA

GRAND LAKE

T13S - R10E

