

TRACT 46088 - Bossier and Caddo Parishes, Louisiana

All lands, including lands now or formerly constituting the beds and bottoms of all water bodies of every nature and description, owned by and not presently under mineral lease as of July 8, 2026 from the State of Louisiana, situated in Bossier and Caddo Parishes, Louisiana, and being more fully described as follows: A certain tract of land located in Section 3, Township 17 North, Range 13 West, Bossier Parish, Louisiana, being more particularly described in that certain Cash Sale Deed, in Instrument Number 902849, Book 1411, Page 194, of the Conveyance Records of Bossier Parish, Louisiana, containing **16.81 acres**, all as more particularly outlined on a plat on file in the Office of State Resources, Department of Conservation and Energy. All bearings, distances and coordinates are based on Louisiana Coordinate System of 1927, (North or South Zone), where applicable.

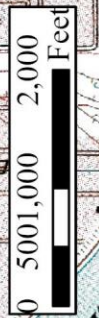
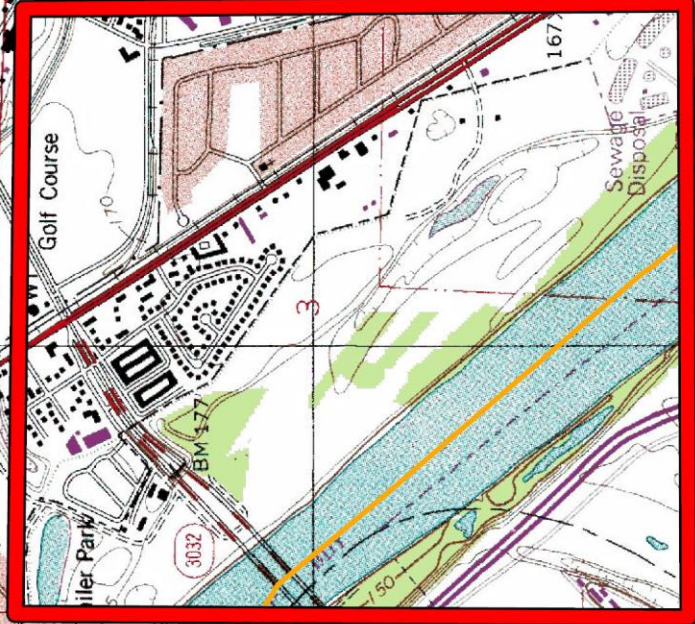
NOTE: The above description of the Tract nominated for lease has been provided and corrected, where required, exclusively by the nomination party. Any mineral lease selected from this Tract and awarded by the Louisiana State Mineral and Energy Board shall be without warranty of any kind, either express, implied, or statutory, including, but not limited to, the implied warranties of merchantability and fitness for a particular purpose. Should the mineral lease awarded by the Louisiana State Mineral and Energy Board be subsequently modified, cancelled or abrogated due to the existence of conflicting leases, operating agreements, private claims or other future obligations or conditions which may affect all or any portion of the leased Tract, it shall not relieve the Lessee of the obligation to pay any bonus due thereon to the Louisiana State Mineral and Energy Board, nor shall the Louisiana State Mineral and Energy Board be obligated to refund any consideration paid by the Lessor prior to such modification, cancellation, or abrogation, including, but not limited to, bonuses, rentals and royalties.

Applicant: CYPRESS ENERGY PARTNERS, LLC

Bidder	Cash Payment	Price/Acre	Rental	Oil	Gas	Other

Legend

- 26070001
- Countries



Office of State Resources, Acres: 16.81 Tract Number: 46088

TRACT 46089 - Bossier and Caddo Parishes, Louisiana

All of the lands now or formerly constituting the beds and bottoms of all water bodies of every nature and description as to which title is vested in the State of Louisiana, together with all islands arising therein and other lands formed by accretion or by reliction, where allowed by law, excepting tax adjudicated lands, and not presently under mineral lease on July 8, 2026, situated in Bossier and Caddo Parishes, Louisiana, and more particularly described as follows: Beginning at a point being a point on the Northern boundary of State Lease No. 20030, as amended, having Coordinates of X = 1,635,398.46 and Y = 622,831.80; thence South 90 degrees 00 minutes 00 seconds West 5,201.90 feet along the North boundary of said State Lease No. 20030, as amended, to a point being its Northwest corner having Coordinates of X = 1,630,196.56 and Y = 662,831.80; thence North 00 degrees 34 minutes 27 seconds East 5,707.36 feet to a point having Coordinates of X = 1,630,250.44 and Y = 668,538.90; thence South 89 degrees 00 minutes 10 seconds East 5,127.81 feet to a point having Coordinates of X = 1,635.377.47 and Y = 668,449.66; thence South 00 degrees 12 minutes 51 seconds East 5,617.90 feet to the point of beginning, (This tract includes only waterbottoms claimed and owned by the state and specifically excludes any land which the state may claim or own and to which the mineral rights are vested in the state), containing approximately **101 acres**, all as more particularly outlined on a plat on file in the Office of State Resources, Department of Conservation and Energy. All bearings, distances and coordinates are based on Louisiana Coordinate System of 1927, (North or South Zone), where applicable.

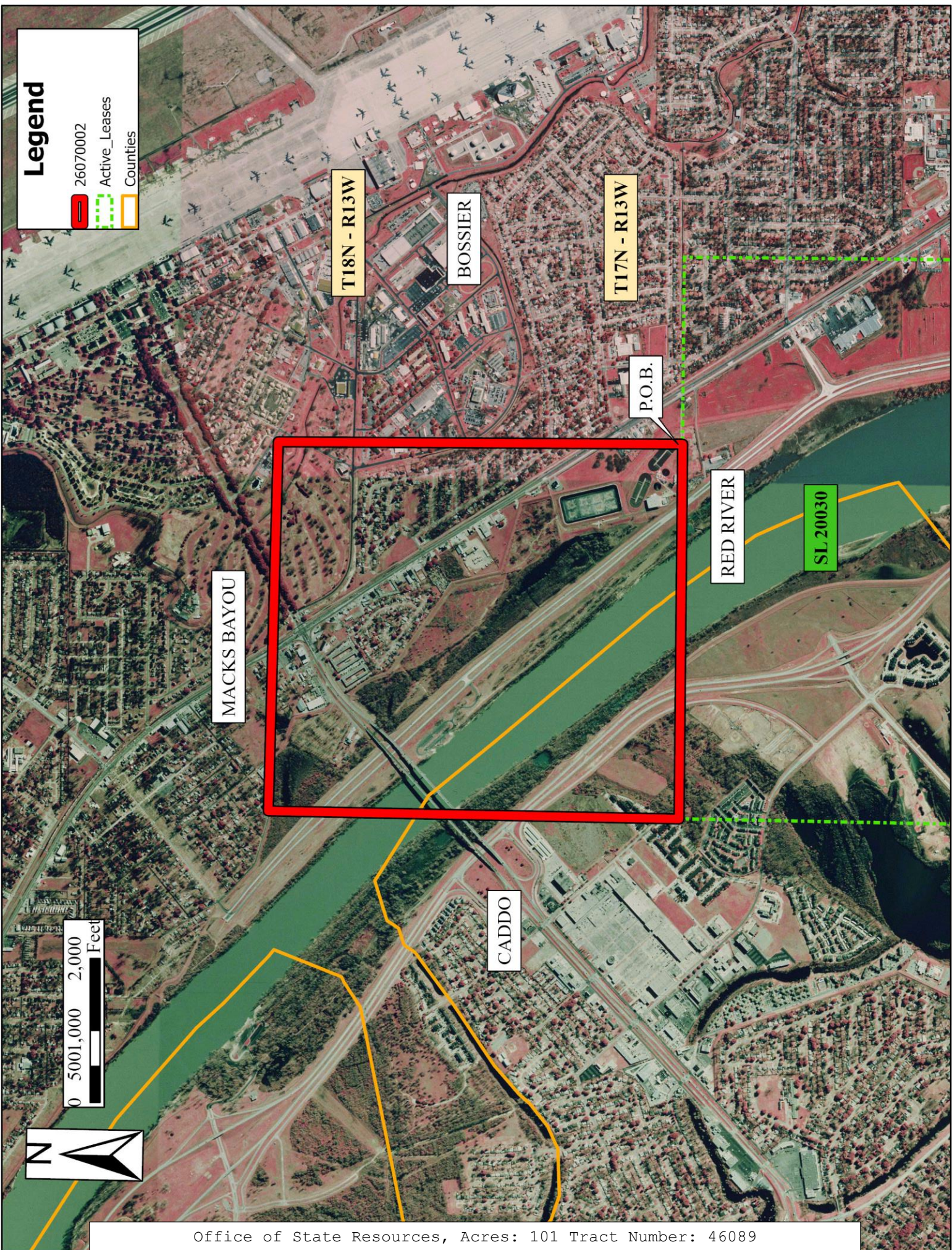
NOTE: The above description of the Tract nominated for lease has been provided and corrected, where required, exclusively by the nomination party. Any mineral lease selected from this Tract and awarded by the Louisiana State Mineral and Energy Board shall be without warranty of any kind, either express, implied, or statutory, including, but not limited to, the implied warranties of merchantability and fitness for a particular purpose. Should the mineral lease awarded by the Louisiana State Mineral and Energy Board be subsequently modified, cancelled or abrogated due to the existence of conflicting leases, operating agreements, private claims or other future obligations or conditions which may affect all or any portion of the leased Tract, it shall not relieve the Lessee of the obligation to pay any bonus due thereon to the Louisiana State Mineral and Energy Board, nor shall the Louisiana State Mineral and Energy Board be obligated to refund any consideration paid by the Lessor prior to such modification, cancellation, or abrogation, including, but not limited to, bonuses, rentals and royalties.

Applicant: CYPRESS ENERGY PARTNERS, LLC

Bidder	Cash Payment	Price/Acre	Rental	Oil	Gas	Other

Legend

-  26070002
-  Active_Leases
-  Counties



Office of State Resources, Acres: 101 Tract Number: 46089

TRACT 46090 - East Baton Rouge and West Baton Rouge Parishes, Louisiana

All of the lands now or formerly constituting the beds and bottoms of all water bodies of every nature and description as to which title is vested in the State of Louisiana, together with all islands arising therein and other lands formed by accretion or by reliction, where allowed by law, excepting tax adjudicated lands, and not presently under mineral lease on July 8, 2026, situated in East Baton Rouge and West Baton Rouge Parishes, Louisiana, and more particularly described as follows: Beginning at a point having Coordinates of X = 2,008,565.33 and Y = 706,525.69; thence East 17,865.93 feet to a point having Coordinates of X = 2,026,431.27 and Y = 706,525.69; thence South 15,872.35 feet to a point having Coordinates of X = 2,026,431.27 and Y = 690,653.34; thence West 17,865.93 feet to a point having Coordinates of X = 2,008,565.33 and Y = 690,653.34; thence North 15,872.35 feet to the point of beginning, (This tract includes only waterbottoms claimed and owned by the state and specifically excludes any land which the state may claim or own and to which the mineral rights are vested in the state), containing approximately **1,804 acres**, all as more particularly outlined on a plat on file in the Office of State Resources, Department of Conservation and Energy. All bearings, distances and coordinates are based on Louisiana Coordinate System of 1927, (North or South Zone), where applicable.

NOTE: The above description of the Tract nominated for lease has been provided and corrected, where required, exclusively by the nomination party. Any mineral lease selected from this Tract and awarded by the Louisiana State Mineral and Energy Board shall be without warranty of any kind, either express, implied, or statutory, including, but not limited to, the implied warranties of merchantability and fitness for a particular purpose. Should the mineral lease awarded by the Louisiana State Mineral and Energy Board be subsequently modified, cancelled or abrogated due to the existence of conflicting leases, operating agreements, private claims or other future obligations or conditions which may affect all or any portion of the leased Tract, it shall not relieve the Lessee of the obligation to pay any bonus due thereon to the Louisiana State Mineral and Energy Board, nor shall the Louisiana State Mineral and Energy Board be obligated to refund any consideration paid by the Lessor prior to such modification, cancellation, or abrogation, including, but not limited to, bonuses, rentals and royalties.

Applicant: CUMMINGS LAND SERVICES

Bidder	Cash Payment	Price/Acre	Rental	Oil	Gas	Other

Legend

26070003
Counties



0 1,500 3,000 6,000 Feet

P.O.B.

PROFIT ISLAND CHUTE

T5S - R2W

T5S - R1W

EAST BATON ROUGE

MISSISSIPPI RIVER



T6S - R12E

T6S - R11E

T5S - R11E

WEST BATON ROUGE

TRACT 46091 - Plaquemines Parish, Louisiana

All of the lands now or formerly constituting the beds and bottoms of all water bodies of every nature and description as to which title is vested in the State of Louisiana, together with all islands arising therein and other lands formed by accretion or by reliction, where allowed by law, excepting tax adjudicated lands, and not presently under mineral lease on July 8, 2026, situated in Plaquemines Parish, Louisiana, and more particularly described as follows: Beginning at a point having Coordinates of X = 2,504,630.00 and Y = 265,950.00; thence South 7,240.00 feet to a point having Coordinates of X = 2,504,630.00 and Y = 258,710.00; thence West 1,862.97 feet to a point on the East line of Tract 3 of State Lease No. 1464, as amended, having Coordinates of X = 2,502,767.03 and Y = 258,710.00; thence on the boundary of said State Lease No. 1464 the following courses: North 366.38 feet, North 65 degrees 05 minutes 41 seconds West 1,497.63 feet and North 88 degrees 48 minutes 27 seconds West 3,200.00 feet to its Northwest comer having Coordinates of X = 2,498,209.36 and Y = 259,773.66; thence West 219.27 feet to a point having Coordinates of X = 2,497,990.09 and Y = 259,773.66; thence North 01 degrees 07 minutes 41 seconds West 4,100.79 feet to a point on the South line of Tract 2 of said State Lease No. 1464 having Coordinates of X = 2,497,909.36 and Y = 263,873.66; thence on the boundary of said Tract 2 of said State Lease No. 1464 the following courses: North 87 degrees 34 minutes 56 seconds East 3,746.82 feet and North 00 degrees 54 minutes 20 seconds West 1,918.51 feet to a point having Coordinates of X = 2,501,622.52 and Y = 265,950.00; thence East 3,007.48 feet to the point of beginning, **LESS AND EXCEPT** any portion of the Agreement between Cockrell et al and the State of Louisiana, dated May 16, 1938, recorded in Book 88, Page 189, in Plaquemines Parish that may fall within the boundaries of above described tract. The above described tract contains approximately **181 acres**, all as more particularly outlined on a plat on file in the Office of State Resources, Department of Conservation and Energy. All bearings, distances and coordinates are based on Louisiana Coordinate System of 1927, (North or South Zone), where applicable.

NOTE: The above description of the Tract nominated for lease has been provided and corrected, where required, exclusively by the nomination party. Any mineral lease selected from this Tract and awarded by the Louisiana State Mineral and Energy Board shall be without warranty of any kind, either express, implied, or statutory, including, but not limited to, the implied warranties of merchantability and fitness for a particular purpose. Should the mineral lease awarded by the Louisiana State Mineral and Energy Board be subsequently modified, cancelled or abrogated due to the existence of conflicting leases, operating agreements, private claims or other future obligations or conditions which may affect all or any portion of the leased Tract, it shall not relieve the Lessee of the obligation to pay any bonus due thereon to the Louisiana State Mineral and Energy Board, nor shall the Louisiana State Mineral and Energy Board be obligated to refund any consideration paid by the Lessor prior to such modification, cancellation, or abrogation, including, but not limited to, bonuses, rentals and royalties.

NOTE: The State of Louisiana does hereby reserve, and this lease shall be subject to, the imprescriptible right of surface use in the nature of a servitude in favor of the Department of Conservation and Energy, including its Offices and Commissions, for the sole purpose of implementing, constructing, servicing and maintaining approved coastal zone management and/or restoration projects. Utilization of any and all rights derived under this lease by the mineral lessee, its agents, successors or assigns, shall not interfere with nor hinder the reasonable surface use by the Department of Conservation and Energy, its Offices or Commissions, as herein above reserved.

Applicant: OIL LAND SERVICES, INC.

Bidder	Cash Payment	Price/Acre	Rental	Oil	Gas	Other

Legend

26070004

Active_Leases

Counties

Freeze Statute



P.O.B.

LAKE WASHINGTON

PLAQUEMINES

BILLET BAY

LAKE ROBINSON

SL 1464

SL 1464

BARATARIA BAY

0 5001,000 2,000 Feet



Office of State Resources, Acres: 181 Tract Number: 46091