

**TRACT 46092 - Livingston Parish, Louisiana**

A certain Tract of land, excluding the beds and bottoms of all navigable waters, belonging to and not presently under mineral lease from Louisiana Department Of Transportation And Development on July 8, 2026, being more fully described as follows: Certain tracts of land belonging to the Louisiana Department of Transportation and Development, being all that part of U.S. Highway 190, and rights of way, being bounded on the East by the East line of Section 27 and bounded on the West by the West line of the East Half of the Northwest Quarter (E/2 of NW/4) of Section 29, all in Township 6 South, Range 4 East, St. Helena Meridian, Livingston Parish, Louisiana, containing approximately **35.021 acres**, all as more particularly outlined on a plat on file in the Office of State Resources, Department of Conservation and Energy. The description is based on information provided by the State Agency regarding location and ownership of surface and mineral rights. All bearings, distances and coordinates, if applicable, are based on Louisiana Coordinate System of 1927, (North or South Zone).

NOTE: The above description of the Tract nominated for lease has been provided and corrected, where required, exclusively by the nomination party. Any mineral lease selected from this Tract and awarded by the Louisiana State Mineral and Energy Board shall be without warranty of any kind, either express, implied, or statutory, including, but not limited to, the implied warranties of merchantability and fitness for a particular purpose. Should the mineral lease awarded by the Louisiana State Mineral and Energy Board be subsequently modified, cancelled or abrogated due to the existence of conflicting leases, operating agreements, private claims or other future obligations or conditions which may affect all or any portion of the leased Tract, it shall not relieve the Lessee of the obligation to pay any bonus due thereon to the Louisiana State Mineral and Energy Board, nor shall the Louisiana State Mineral and Energy Board be obligated to refund any consideration paid by the Lessor prior to such modification, cancellation, or abrogation, including, but not limited to, bonuses, rentals and royalties.

NOTE: No surface operations will be performed on this property.

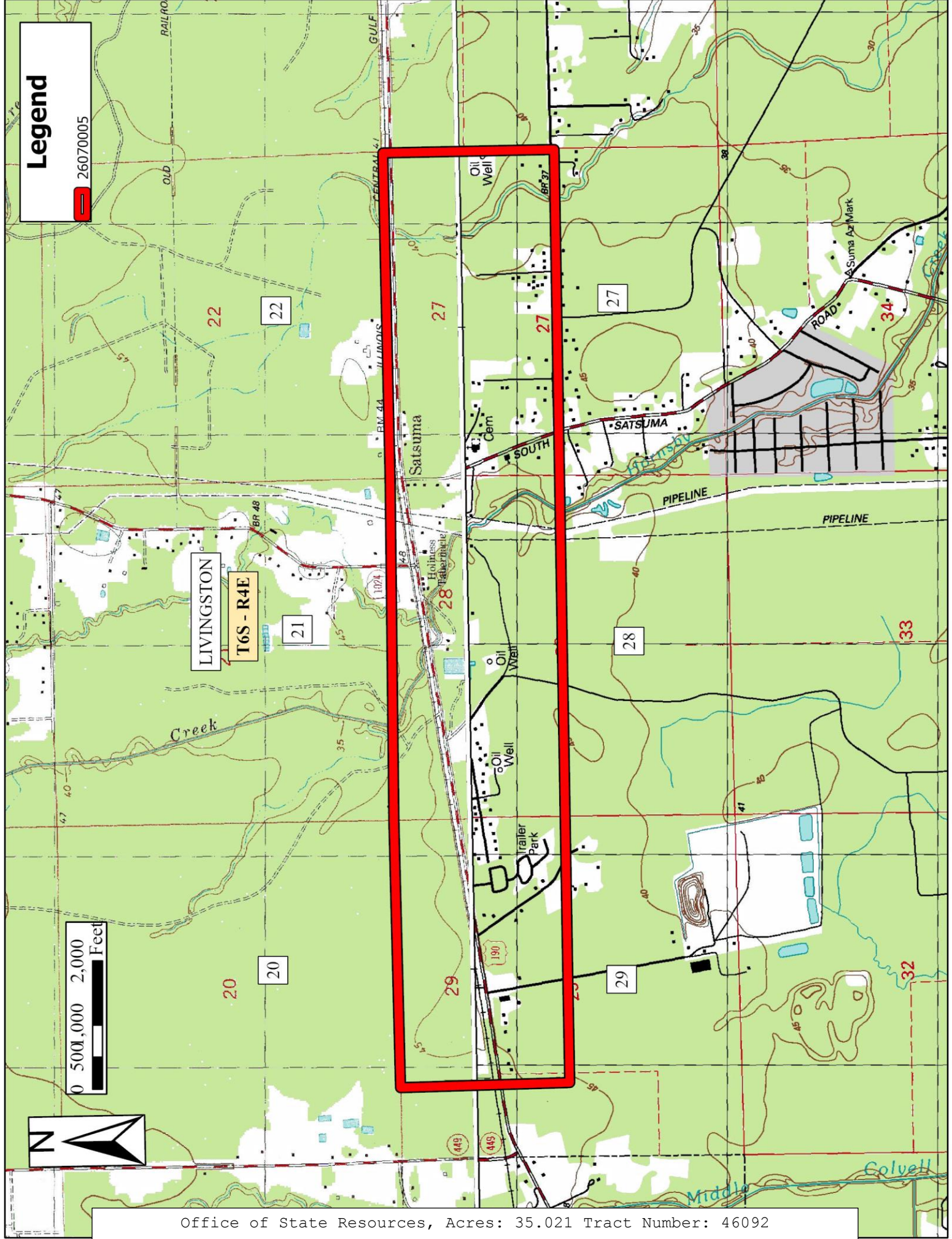
Applicant: MARK A. O'NEAL & ASSOCIATES, INC. to Agency and by Resolution from the Louisiana Department Of Transportation And Development authorizing the Mineral Board to act in its behalf

| Bidder | Cash Payment | Price/Acre | Rental | Oil | Gas | Other |
|--------|--------------|------------|--------|-----|-----|-------|
|        |              |            |        |     |     |       |
|        |              |            |        |     |     |       |
|        |              |            |        |     |     |       |
|        |              |            |        |     |     |       |

# Legend

26070005

0 500 1,000 2,000 Feet



Office of State Resources, Acres: 35.021 Tract Number: 46092